

AN INSIGHT OF FROZEN MEAT IN SINGAPORE

The background is a solid blue gradient. On the right side, there are several white lines of varying lengths and thicknesses, all slanted upwards from left to right, creating a sense of motion or a modern design element.



MEAT TRADERS ASSOCIATION (SINGAPORE)

- Formed in year 2001.
- 19 years old.
- 80 members.

MISSION

At Meat Traders Association (Singapore), we are committed to:

- promoting, supporting and protecting the interests of our members in the import, export, wholesale, distribution, trade, production and manufacturing of meat and meat products;
- working with our members to raise the standard of meat hygiene practise, safety and quality assurance for the furtherance of the meat industry;
- collaborating with relevant authorities and embassies to diversify to new sources of meat supplies to ensure a safe, sustainable and resilient supply of high quality meat to Singapore;
- engaging relevant authorities and embassies to develop overseas market for export of meat and meat products;
- fostering continuous skills upgrading and knowledge sharing for the meat industry;
- facilitating adoption and implementation of digitalization in the meat including the pursuit of Industry 4.0;
- encouraging our members to promote fair and progressive employment practices.

FRIENDS OF MEAT TRADERS ASSOCIATION (SINGAPORE)

- Enterprise Singapore
- National Trades Union Congress (U-SME)
- Seafood Industries Association Singapore
- Singapore Chefs' Association
- Singapore Food Agency
- Singapore Manufacturing Federation
- Singapore Productivity Centre
- Singapore Chinese Chamber of Commerce & Industry
- Singapore Food Manufacturers' Association
- Singapore Fruits & Vegetables Import & Export Association
- Trade & Investment Queensland
- US Meat Export Federation
- USA Poultry and Egg Export Council
- New Zealand Trade and Enterprise
- ProColombia Singapore
- The Australian High Commission, Singapore
- The Embassy of the Argentine Republic in Singapore
- The Embassy of The Federative Republic of Brazil in Singapore
- The Embassy of Hungary in Singapore
- The Embassy of the Republic of Peru in Singapore
- The Embassy of the Republic of Poland in Singapore
- The Embassy of the Republic of Ukraine in Singapore
- The Government of Western Australia, Singapore Office
- The High Commission of Canada in Singapore
- Trade Office of Vietnam Embassy in Singapore

2018 COLLABORATION WITH POLAND



2018 TRADE MISSION TO BELGIUM



2018 ANNUAL GENERAL MEETING



2018 CHRISTMAS PARTY



2019 CHINESE NEW YEAR LOHEI



2019 TRADE MISSION TO CHONGQING, CHINA



- ▶ Besides these, we have regular update meetings with Singapore Food Agency (SFA), Ministry of Trade, Embassies.
 - ▶ We also organise to attend trade shows and visit meat factories as well.
 - ▶ In addition, we have linkage to the Meat Importers & Traders Association in Philippines, and China.
 - ▶ And we are looking forward to expand our linkage around the world as well.
 - ▶ So much, for the introduction of MTA. I would like to present some meat statistic.
- 

SINGAPORE IMPORT STATISTIC: CHICKEN

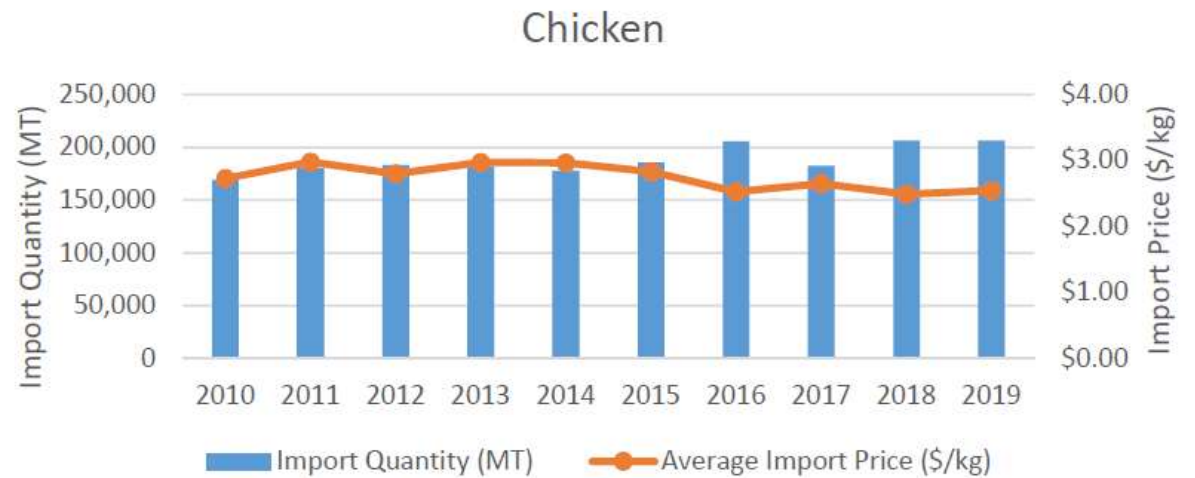
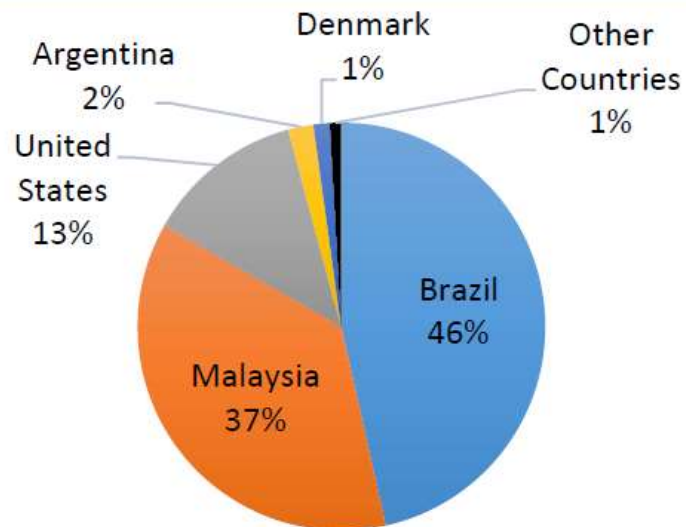
YEAR	2017	2018	2019
Quantity (MT)	182,000	206,000	206,000
Value (SGD)	\$484,000.00	\$513,000.00	\$525,000.00

- Chicken is the basic protein, where everyone can consumed.
- We consumed 35kg of chicken per capita.

* The statistics are courtesy from SFA.

AVERAGE YEARLY IMPORT:

Chicken - 64% frozen, 36% fresh



Top Import Parts / Items:

- Leg
- Wing
- Whole Chicken
- Breast / Fillet
- Drumstick

* The statistics are courtesy from SFA.

SINGAPORE IMPORT STATISTIC: PORK

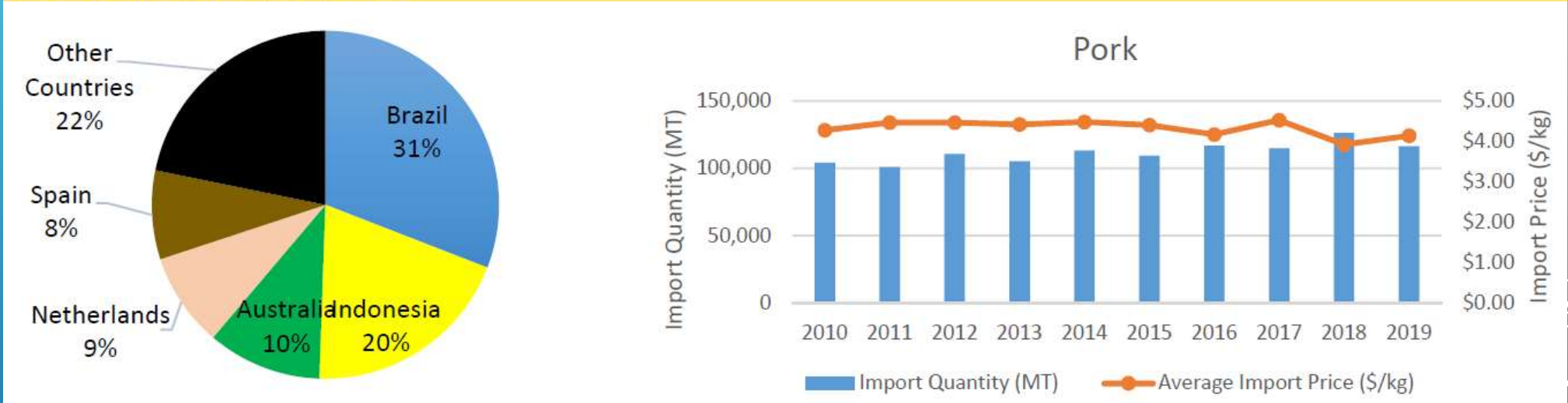
YEAR	2017	2018	2019
Quantity (MT)	115,000	126,000	116,000
Value (SGD)	\$520,000	\$500,000	\$480,000

- We consumed 20kg of pork per capita.

* The statistics are courtesy from SFA.

AVERAGE YEARLY IMPORT:

Pork - 67% frozen, 33% fresh



Top Import Parts / Items:

- Belly
- Ham / Leg
- Softbone / Rib / Riblet
- Side
- Shoulder

* The statistics are courtesy from SFA.

SINGAPORE IMPORT STATISTIC: BEEF

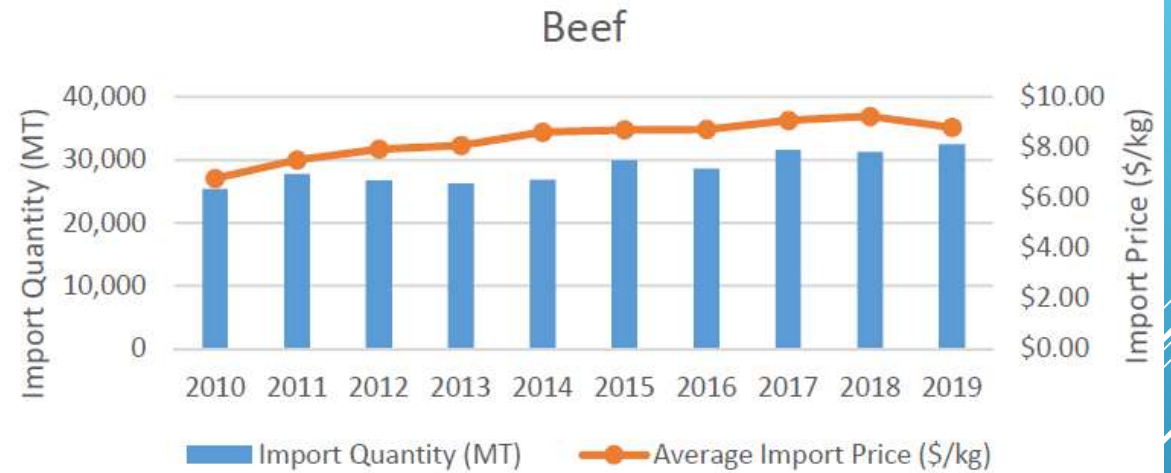
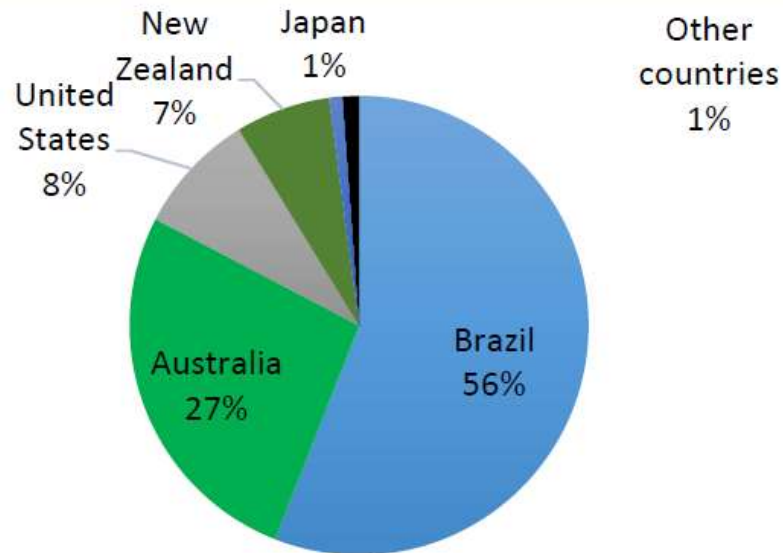
YEAR	2017	2018	2019
Quantity (MT)	32,000	31,000	32,000
Value (SGD)	\$287,000	\$288,000	\$285,000

- We consumed about 6kg of beef per capita.
- Because the India and Chinese don't eat too much beef due to religion.

* The statistics are courtesy from SFA.

AVERAGE YEARLY IMPORT:

Beef



Top Import Parts / Items:

- Knuckle / Flank
- Crop / Forequarter
- Chunk / Blade
- Striploin
- Leg / Hindquarter

* The statistics are courtesy from SFA.

- **We import about \$1.5 billion of meat per year.**
- **For meat export to Singapore, it is preferable to be Halal to cater for all races and wider specimen of consumers.**
- **In addition, Singapore is always a showroom for the regional market, especially Malaysia and Indonesia.**
- **If it is proven to be successful in Singapore, it will work in the regional markets as well.**



Meat Traders Association (Singapore)
新加坡肉商联合会

ALVIN KWEK 郭志强
President 主席
Tel: +65 9637 9412

10 Anson Road #26-08, International Plaza,
Singapore 079903
Tel: +65 6223 9000 Fax: +65 6227 8102
Email: meatsgp@gmail.com

Website: <https://www.facebook.com/MeatTradersAssociationSingapore/>



福德私人有限公司
Foodtrade Pte Ltd

10 Ubi Crescent, #02-49
Ubi Techpark, Lobby C
Singapore 408564
Tel: (65) 6841 1674
Fax: (65) 6841 1647
Email: foodtrade@singnet.com.sg
Skype: Alvin.kwek

郭志强
Alvin Kwek
Mobile: (65) 9637 9412

Importer, Exporter & Wholesaler of
Frozen Meats, Dalry, Seafood & Other Commodities.

Meat Traders Association (Singapore)

Email: meatsgp@gmail.com

Website: <https://www.facebook.com/MeatTradersAssociationSingapore/>

谢谢

Je vous remercie

Спасибо

Grazie

Thank

Vielen Dank

كل اركش

You

Terima kasih

Obrigado

Gracias

Dziękuję Ci

감사합니다