



[www.vetro-shipping.pl](http://www.vetro-shipping.pl)



## OUR COMPANY

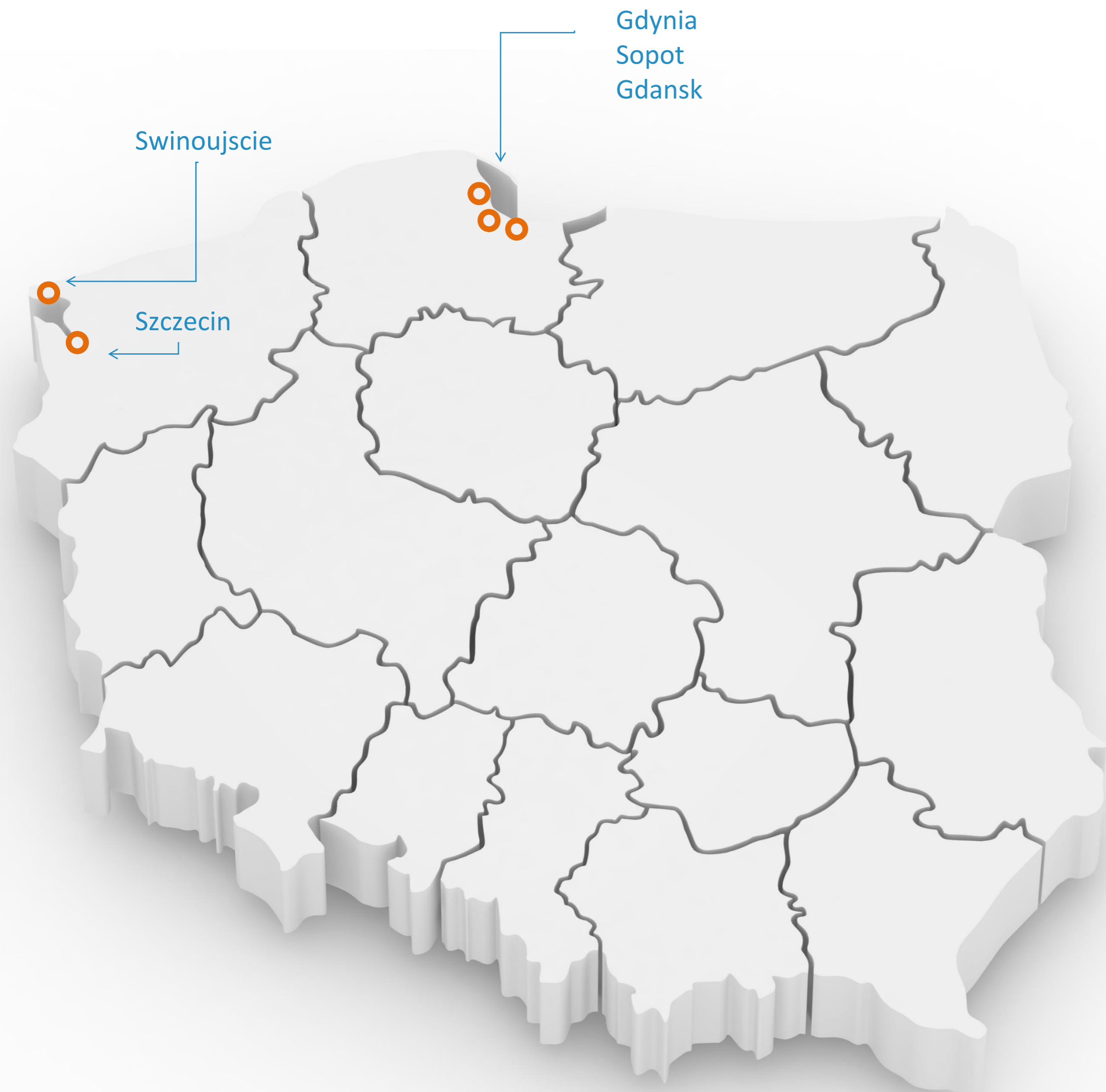
Our company was founded in 2004 and since then we successfully offer:

- *Sea & Land transport including heavy and oversized cargoes*
- *Ship's agency service in all Polish ports*
- *Chartering*
- *Forwarding and logistic solutions*
- *Project supervisions*
- *WOC Terminal Gdańsk – warehouse & port handling*

Our company employs 22 of highly motivated and devoted staff, who are there to help you 24/7.

We have excellent experience in trade and cooperation with foreign companies and we always provide you with the best service possible.





## OUR OFFICES

To meet growing needs of our Customers Vetro offices are located in all 4 major Polish ports (Gdansk, Gdynia, Szczecin & Swinoujscie).



# SHIPPING AGENCY

[www.vetro-shipping.pl](http://www.vetro-shipping.pl)

Our service is available 24 hours a day, 7 days a week throughout the year. We provide first-class port and sea service in all Polish ports.

We focus on providing port agency services to all types of vessels (liquid or dry) calling Polish ports for loading, discharging, drydocking or repairs.

In order to satisfy growing needs of our clients, we run port offices in:

- Gdynia Port,
- Gdansk Port,
- Swinoujscie Port,
- Szczecin Port.



# CHARTERING

[www.vetro-shipping.pl](http://www.vetro-shipping.pl)

Our Team combines long experience and youthful energy, well positioned to provide reliable service for a variety of clients. Whether you are a ship owner, producer of goods, commodity trader or a ship operator, our team have the expertise to assist you on a worldwide basis.

We match the type & size of ships to individual needs/requirements of our Clients.

We specialize in vessels chartering for all types of goods including:

- Bulk
- Liquid
- General
- Project cargoes



# LOGISTICS, FORWARDING, TRANSPORT

Thanks to our experience and close cooperation with sea terminals, owners, rail operators and road carriers we can provide customized and cost-effective logistic solutions.

We offer:

- ✓ Storage and trans-shipment services in all Polish ports.
- ✓ Loading/dischaging of all types of cargoes incl containers
- ✓ Our own, mobile Lashing & Securing Team
- ✓ Port Captain service, calculations and lashing certificates
- ✓ Road tranport of oversized and heavy cargoes
- ✓ River and rail transports

Our activities are based on General Polish Forwarding Conditions (OPWS 2010).



# WAREHOUSE AND OPEN STORAGE

## Storage service to:

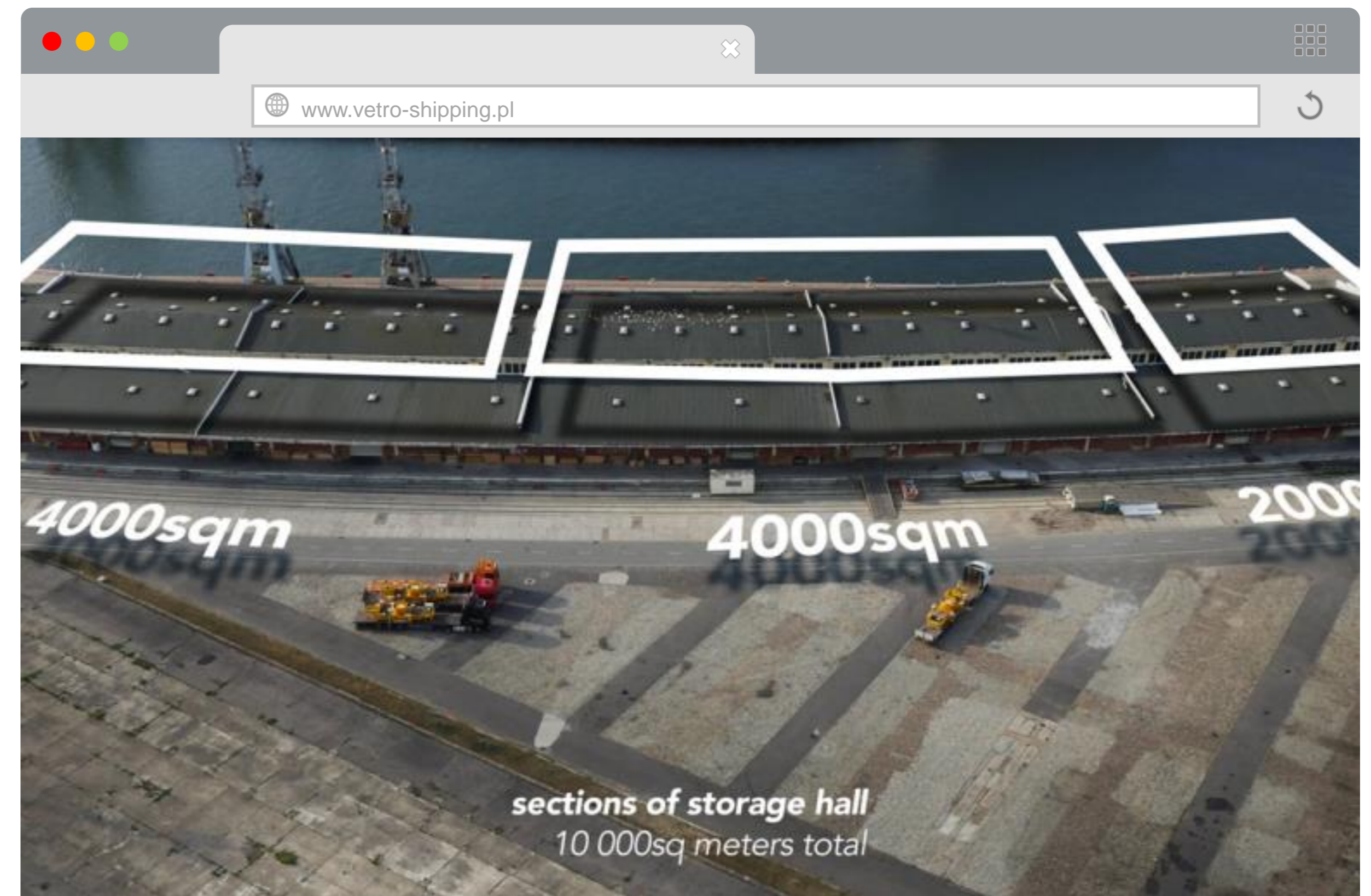
- commodities coming from outside EU (without need of customs clearance)
- commodities in export from EU with possibility to Issue of export documents
- all EU commodities

## Types of cargoes we can handle:

All types of general cargoes, containers, heavy and oversized; ship spares deliveries 'in transit'

## Service to cargoes:

All types of packing, re-packing, packaging into custom made boxes, labeling, technical service, maintenance, repairs, palletizing, unloading overloaded containers.



## Quality, Safety, Health, Environment

Vetro is committed to consider Quality, Safety, Health and Environment as equally important as other business objectives and complies with mandatory rules and regulations. QHSE and security are fully integrated in all Vetro's business process and supported by a documented system (. .)

The quality of the services provided by Vetro is captured in the fact that Vetro is a specialised company with dedicated personnel and we have a target for zero injuries to persons, zero damage to material or the environment.

Source: Vetro QSHE policy

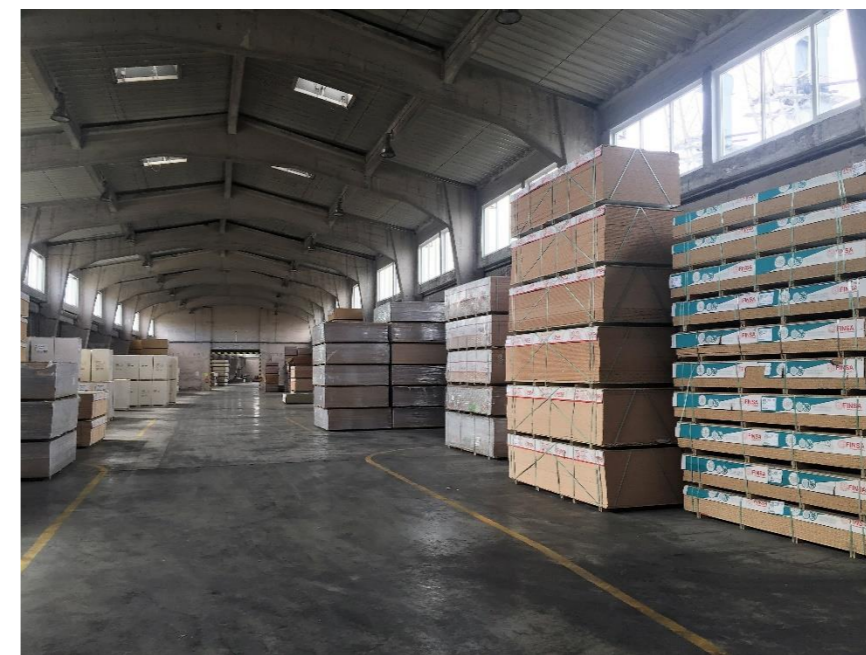
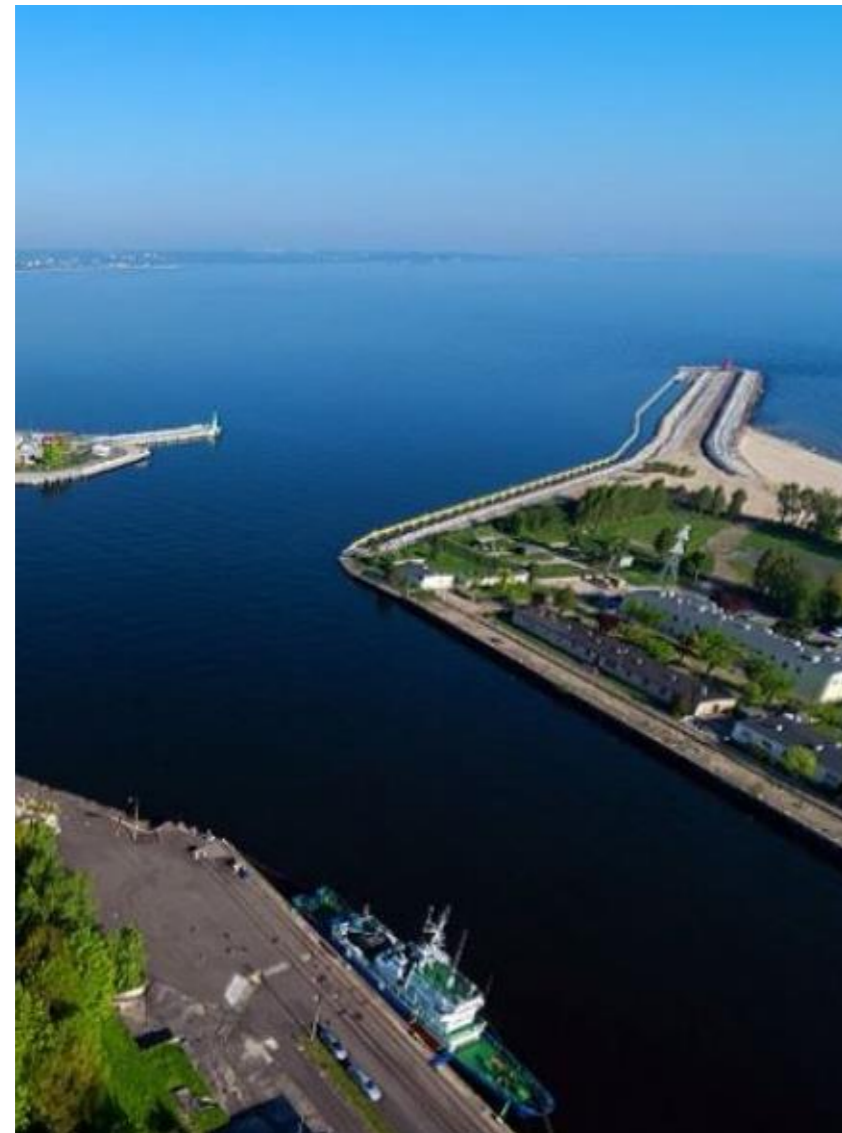






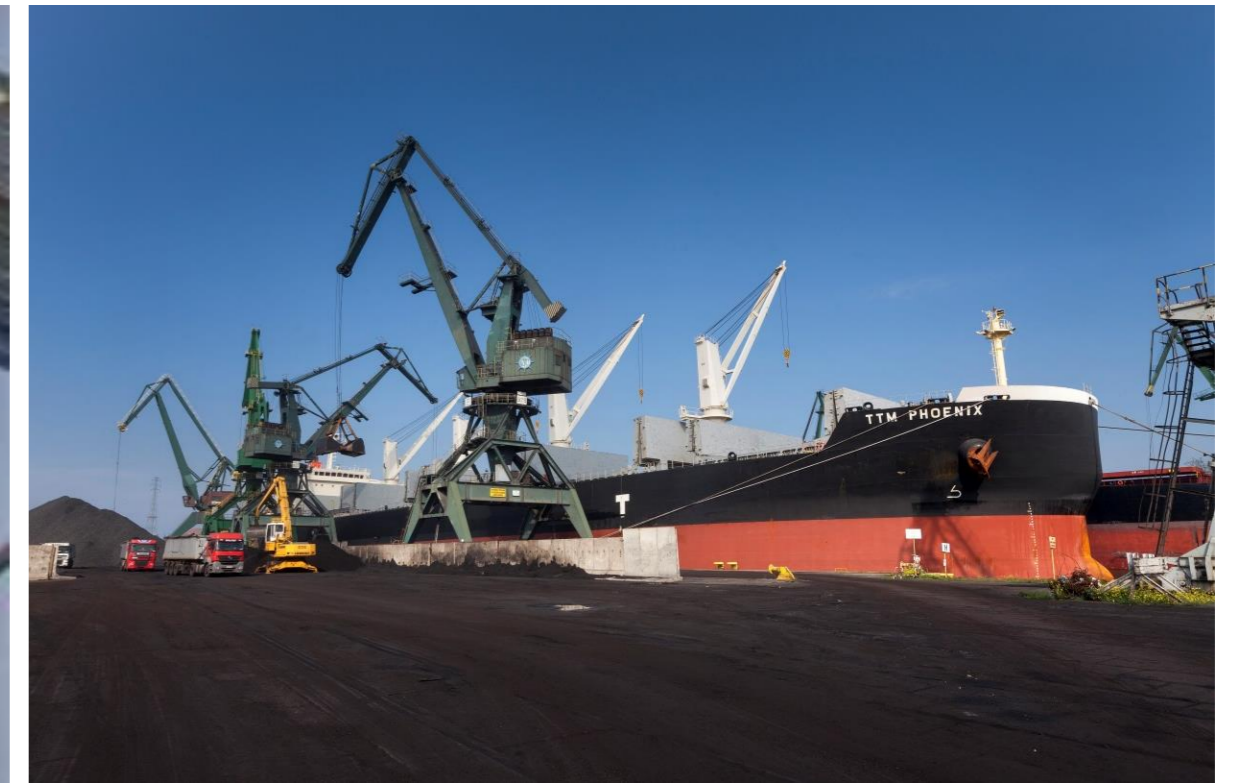
# PORTOFOLIO

---



# PORTOFOLIO

---



## Our Contact Information



### HEAD OFFICE

Al. Niepodległości 809/A 81-810 Sopot  
Tel: +48 58 524 73 51  
Fax: +48 58 524 73 50

#### OFFICE:

E-mail: [logistyka@vetro-shipping.pl](mailto:logistyka@vetro-shipping.pl)

#### TRANSPORT AND LOGISTICS:

E-mail: [forwarding@vetro-shipping.com](mailto:forwarding@vetro-shipping.com)



### PORT GDAŃSK WOC OFFICE

Ul. Przemysłowa 18, Magazyn nr 4, 80-955 Gdańsk  
Tel: +48 58 350 53 07  
Fax: +48 58 524 73 50

#### TRADE AND CONSULTANCY:

E-mail: [marketing@vetro-shipping.pl](mailto:marketing@vetro-shipping.pl)

#### CHARTERING

E-mail: [chartering@vetro-shipping.pl](mailto:chartering@vetro-shipping.pl)



### PORT GDAŃSK OFFICE

PGE Basen Górniczy  
Ul. Roberta de Plelo 6, 80-550 Gdańsk  
Tel/fax: +48 58 524 73 59

#### PORT SERVICES:

E-mail: [basengorniczny@vetro-shipping.com](mailto:basengorniczny@vetro-shipping.com)



### SZCZECIN / ŚWINOUJŚCIE

Ul. Jaracza 3, 72-602 Świnoujście  
Tel: +48 91 321 61 80  
Fax: +48 91 321 62 07  
Mob: +48 507 172 021 (24h)

E-mail: [swinoujscie@vetro-shipping.pl](mailto:swinoujscie@vetro-shipping.pl)