

**PORT
GDYNIA**



**100 LAT
1922-2022**

**PORT OF GDYNIA
EUROPE`S LOGISTIC GATE**

15th MARCH 2023

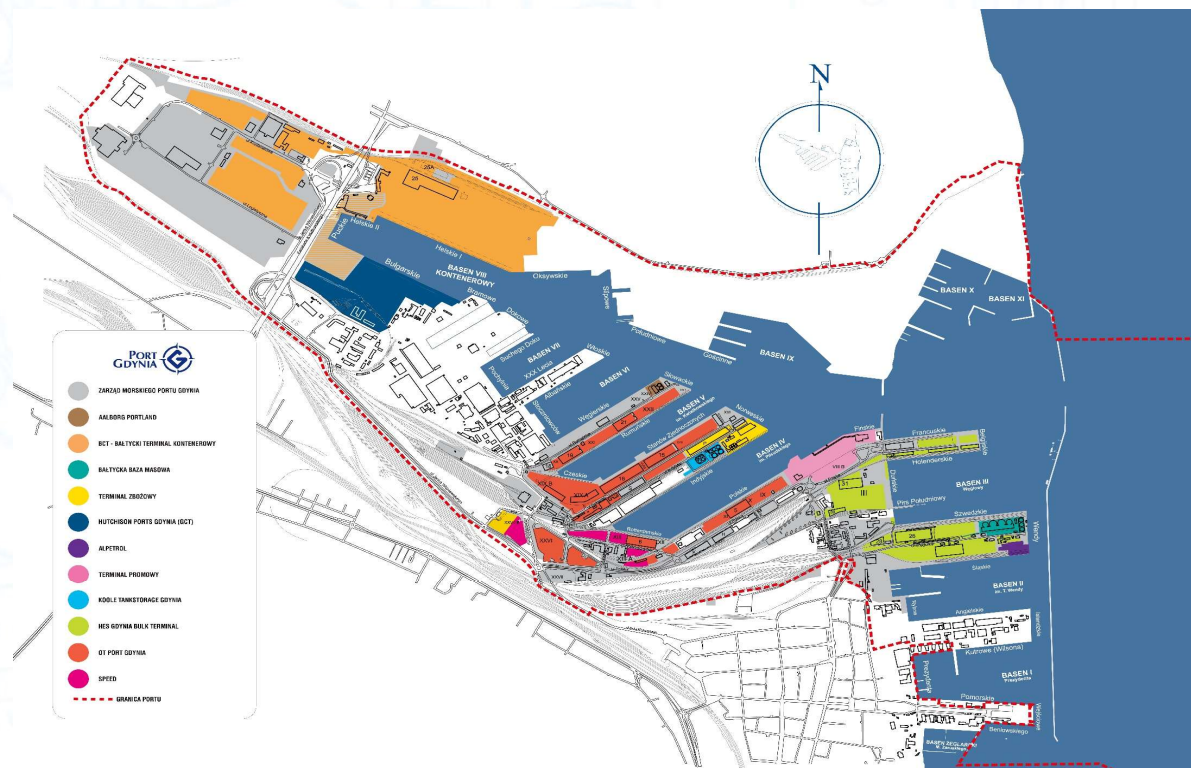
PORT OF GDYNIA

- ❖ The **Port of Gdynia** is a universal port, one of the leading ports in the South Baltic Sea Region.
- ❖ Handled cargo types:
 - General cargo: (containers, roro+ ferry, other)
 - Bulk (Grain, Coal and Coke, Liquid Fuels, Other Bulk Cargo)
 - Timber.

❖ Number of ships calls in 2021: **4 240**

❖ **Basic navigational and technical data:**

- maritime entrance to the port: **150 m wide with a depth of 14.0 m,**
- total port area: 973.1 ha, including 621.5 ha land area (**274.0 ha managed by PGA S.A.**),
- total length of quays: 11.7 km,
- max. draught along **the quays: 13.0 m.**

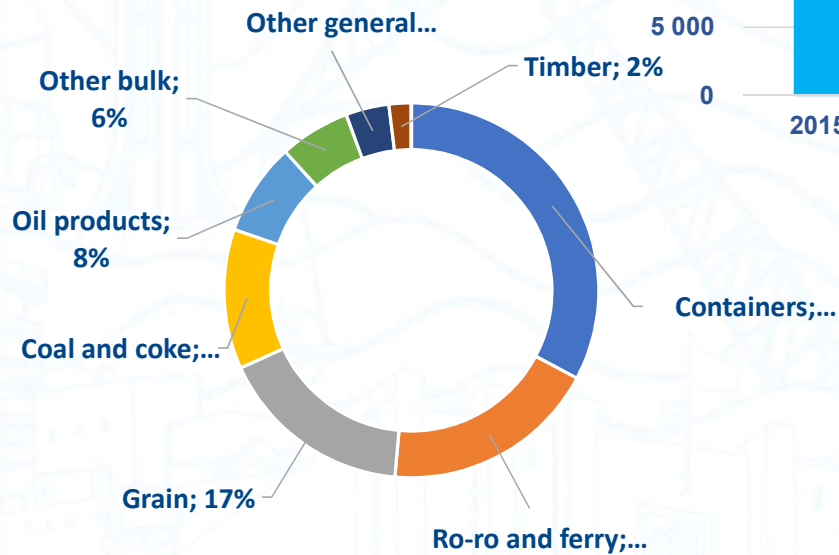
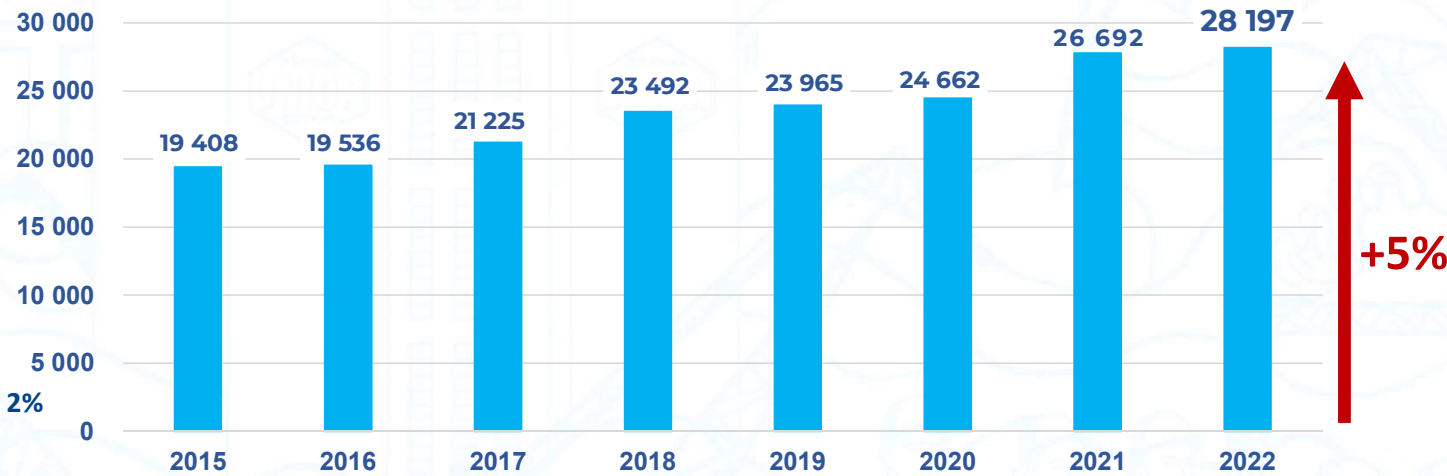


PORT OF GDYNIA

One of the leading seaports in the Baltic Sea Region



Cargo handling in years 2015-2022 [thous. tons]:



PORT OF GDYNIA
Regular maritime connections



100 LAT
1922-2022

Regular Ferry and Ro-Ro lines in Port of Gdynia:



3 departures daily to Karlskrona
Sweden



6 departures weekly to Hanko
Finland



PORT OF GDYNIA

Regular Container lines in Port of Gdynia and daily basis departures of the top container operators



100 LAT
1922-2022


UNIFEEDER

6 departures weekly



2 departures weekly

 **CONTAINERSHIPS** 4 departures weekly

 **VIASEA** 1 departure weekly

 **Hapag-Lloyd** 2-3 departures weekly

 **YANG MING** 1 departure weekly

 **X-PRESS
FEEDERS** 1 – 2 departures weekly


CMA CGM

 **MAERSK**

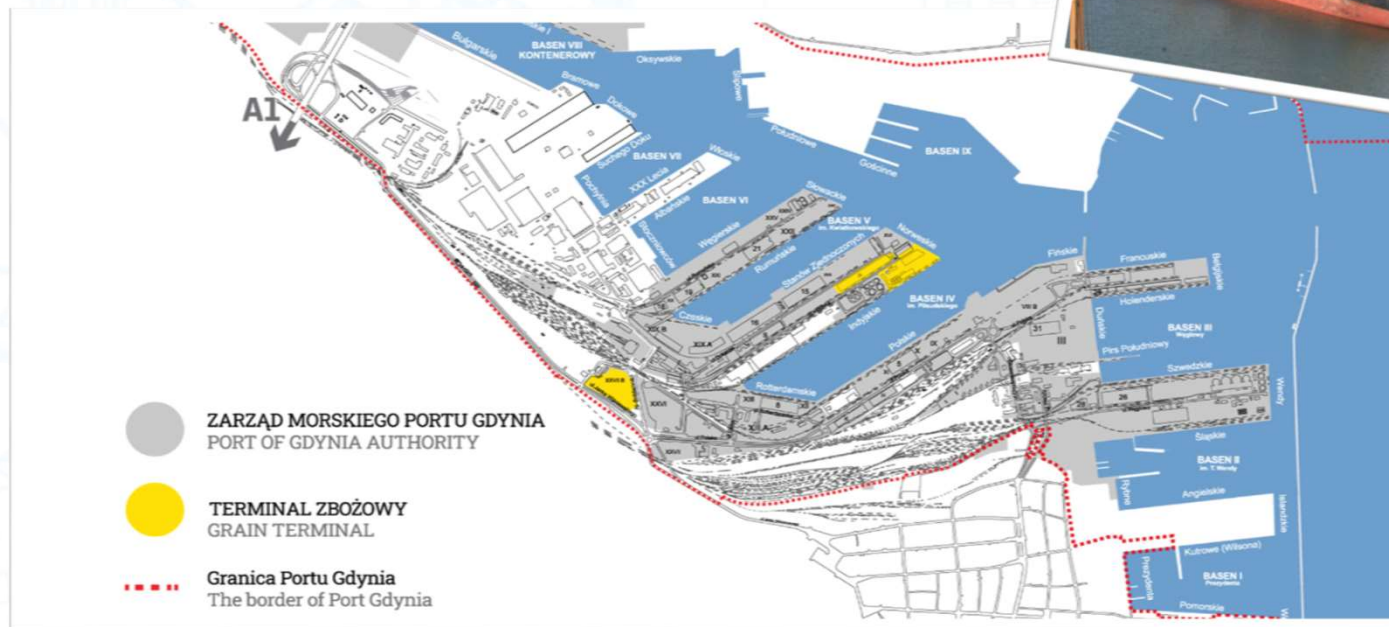


GRAIN TERMINAL TENDER PROCEDURE

- ❖ **Lease agreement duration** - assumes leasing the property for up to 30 years;
- ❖ **Future maximum draft:** Indian Quay - approx. 15.5 m, Norwegian Quay - approx. 15.5 m;
- ❖ **The deadline for submitting requests** – 1 December 2022;
- ❖ **Required appropriate investment;**
- ❖ **Future handling capacity of the terminal** - 2-3 million tons;



100 LAT
1922-2022



OUTER PORT DEVELOPMENT

- 2,5M TEU annually
- 3x Baltmax vessel simultaneously
- 16 m maximum draught
- 4 berths for biggest ships, up to 430 m in length 151 ha
- Rail & truck terminals
- Complete technical infrastructure

Possible additional functionalities

- Ro-ro
- Offshore wind
- Project cargo
- Break bulk



100 LAT
1922-2022

CAPEX

~1bn €

End of the construction

2028



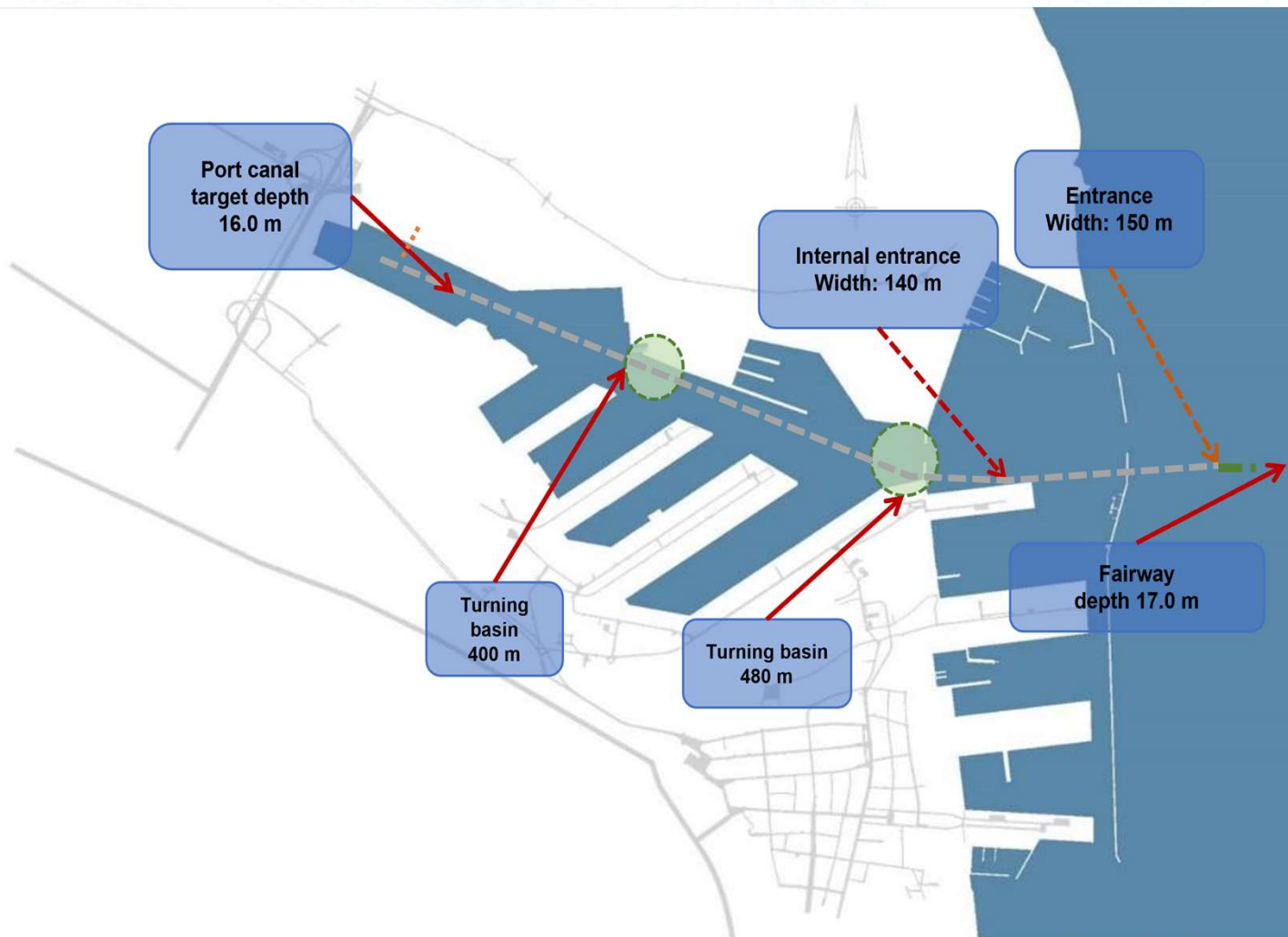
WATERSIDE INVESTMENTS – DREDGING PROJECT



100 LAT
1922-2022

Target navigation parameters in Q4 2023:

- internal entrance: width 150 m,
- channel depth: 16 m.



EXPANSION OF THE RO-RO INFRASTRUCTURE (2026)

Expansion of the ro - ro ramps in the V basin with landing

Currently, a project documentation is being prepared for the investment project: "Modernization of the Czech, United States, and Romanian Quays and Ro-Ro ramps with the landing of a part of Basin V;

- up to 260 meters long and 36 meters width;
- increase the capacity of the port ro-ro terminals and the entire commercial connection between Poland and Scandinavia;
- increase in shipping - 1 mln >> 3 mln;
- landing of the sea basin area – over 19 000 m²;



NEW PUBLIC FERRY TERMINAL

- Public terminal;
- Ferries length up to 240m;
- Terminal area 70.000 sq metres;
- 3-4 departures daily;



100 LAT
1922-2022



DEVELOPMENT OF THE LOGISTIC VALLEY – PORT OF GDYNIA MULTIMODAL PLATFORM

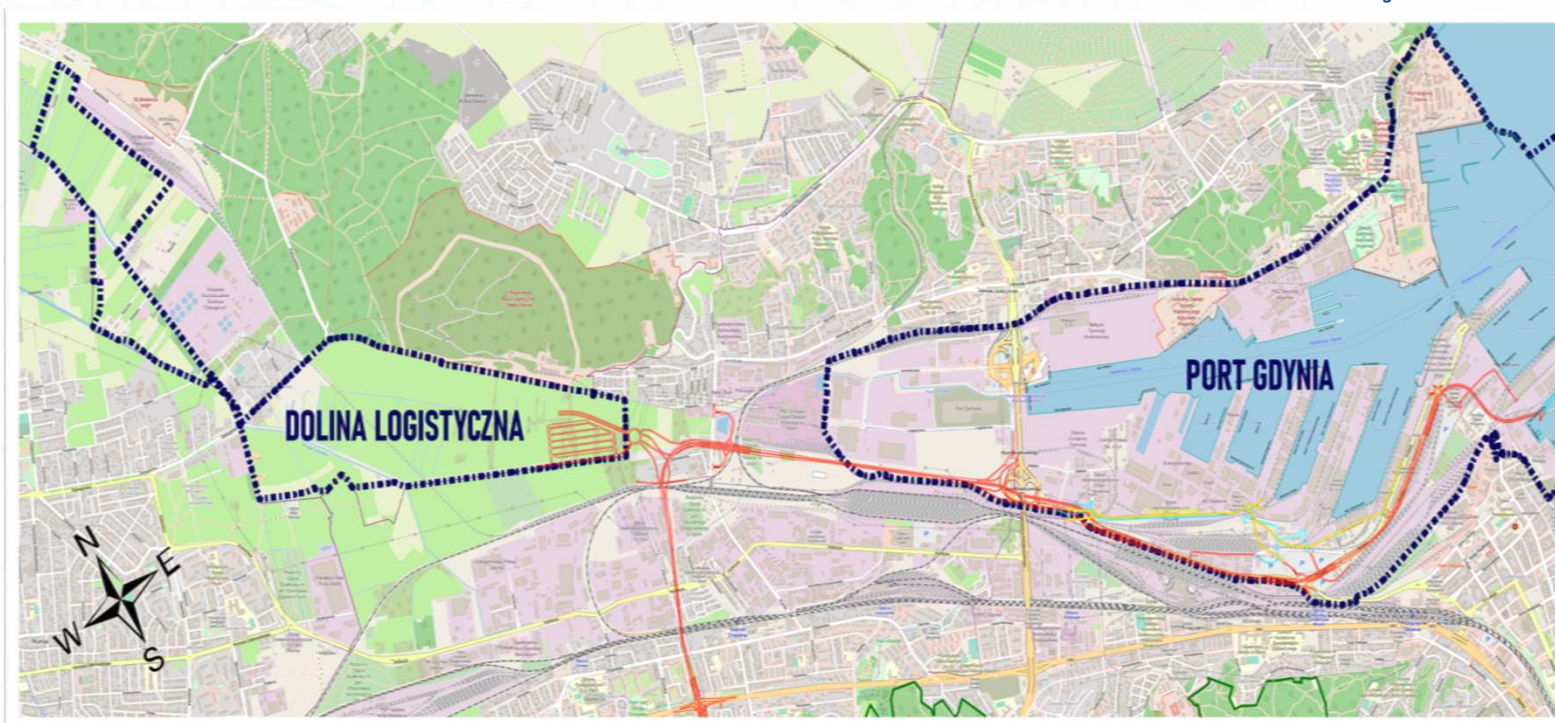
Port of Gdynia is in the process: „Development plan and concept for the development of the Logistics Valley in the Kosakowo Commune together with a preliminary feasibility study“.



100 LAT
1922-2022

Investment include

- public intermodal terminal
- road & rail infrastructure
- central parking (approx. 1300 lorries)
- depot
- other necessary infrastructure and superstructure



3 HIGH-BAY WAREHOUSES AND A COLD STORE



100 LAT
1922-2022

The newly prepared investment of **3 high-bay warehouses** with cold store located in the Logistic Centre of the Port of Gdynia (in between Kontenerowa & Logistyczna Streets).

All warehouses (up to 31 000 m²) will offer necessary technical and social suprastructure, as well as manoeuvring areas and access roads.

The area of approx. 78 500 m² will include 18 lorry and **115 car parking places**.

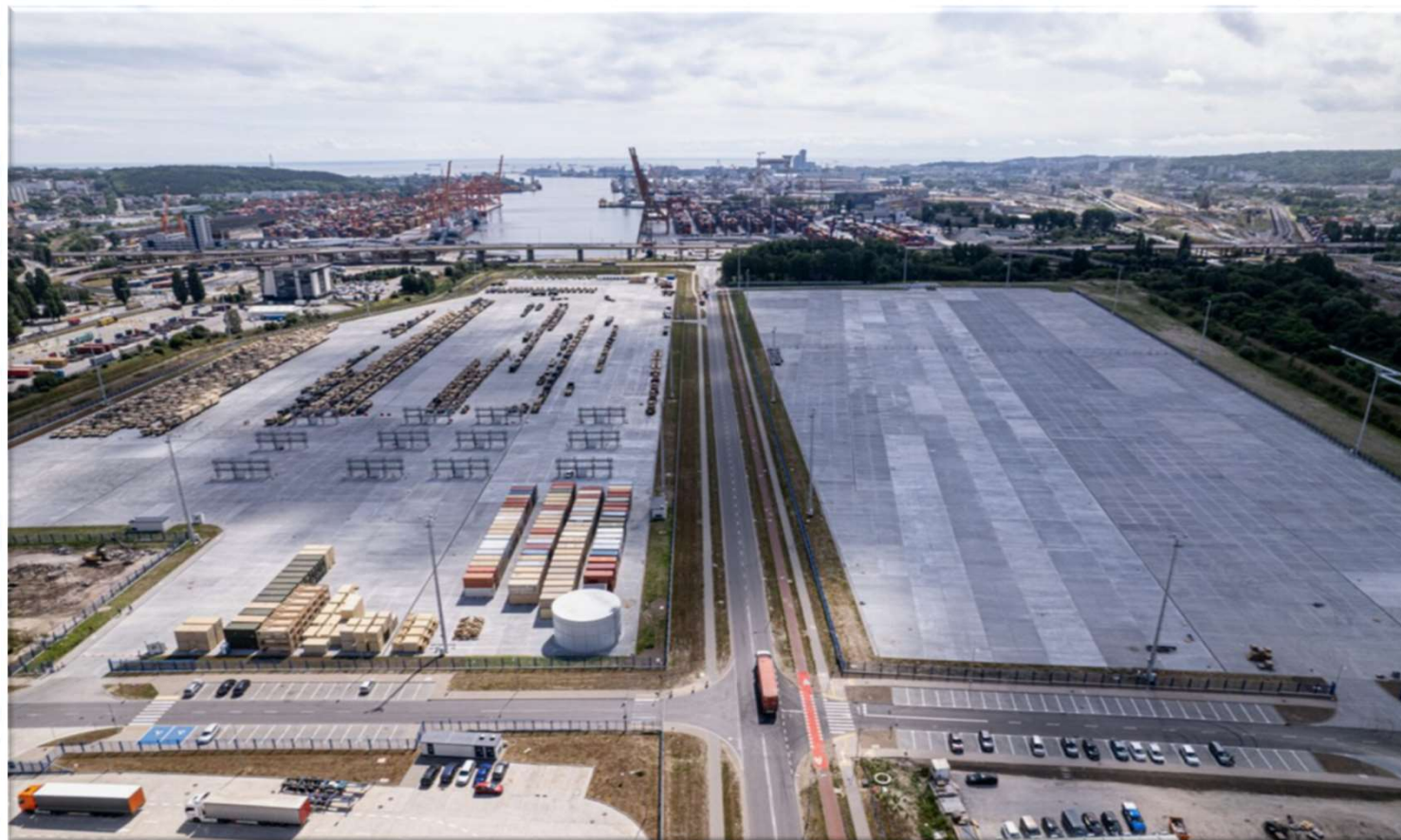


CONTAINER STORAGE YARD

Investment opportunity – 8 500 m²



100 LAT
1922-2022



SELECTED ROAD AND RAILWAY INVESTMENTS

The Red Road – Droga Czerwona

Modern additional road connection between the Port of Gdynia and the national road network

- Investor: Central Transport Hub
- Estimated budget of project: Eur 570 mln
- Planned date of completion: 2028



Railway Line no. 201 Reconstruction

Electrification and construction of the additional track on selected parts of the line.

- Investor: PKP PLK
- Planned date of completion: 2028



THANK YOU FOR ATTENTION

Mateusz Frankiewicz
handlowy@port.gdynia.pl



100 LAT
1922-2022

