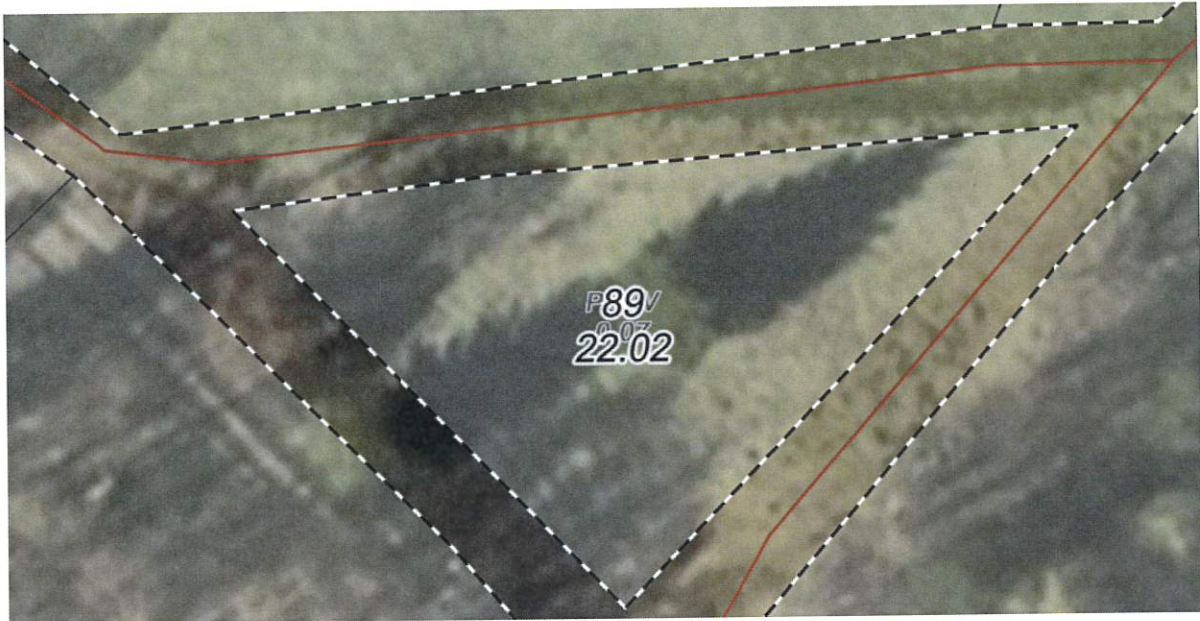


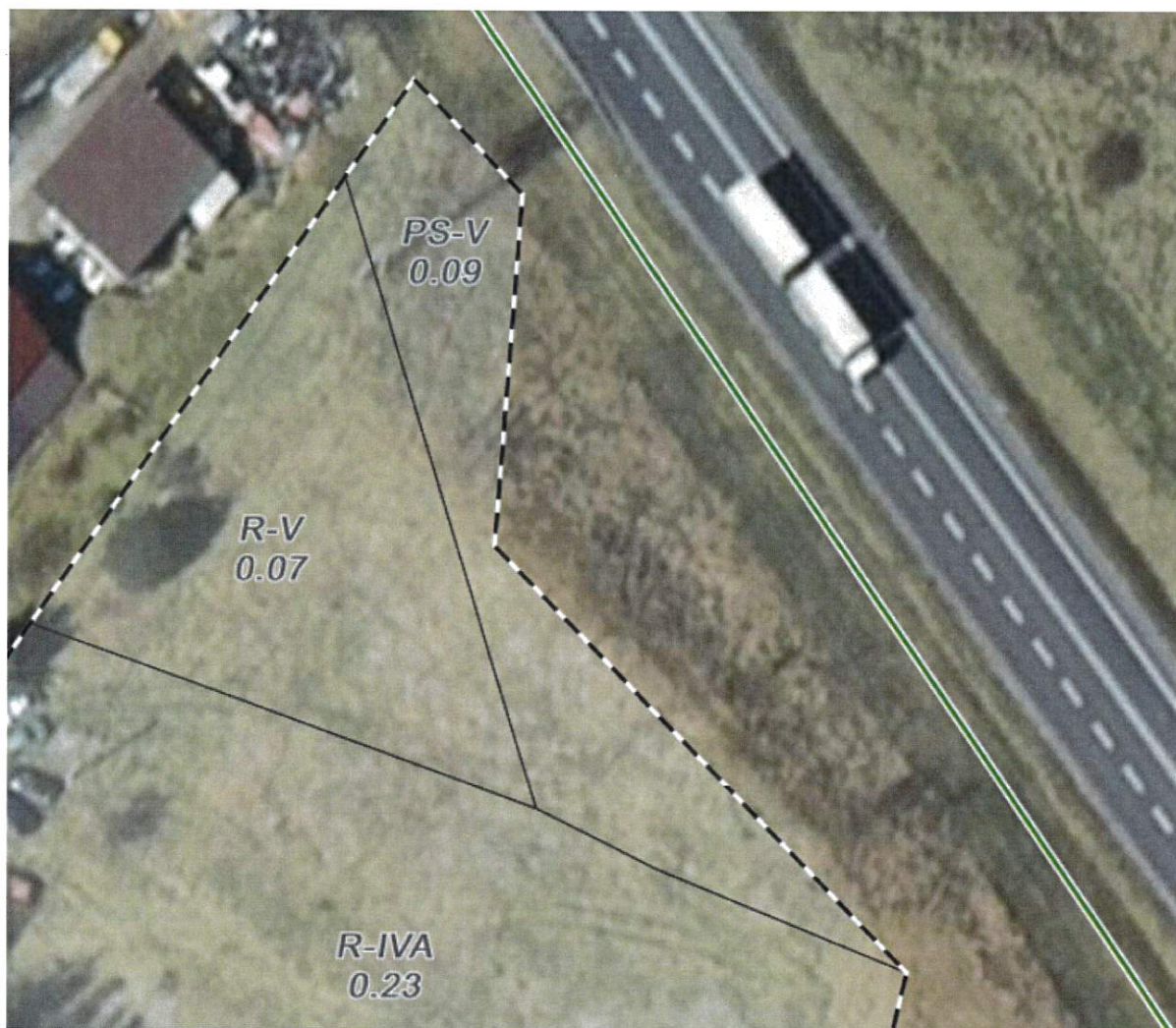
Kat. szulki nr 4 do ogłoszen.

1) 13-24-2-16-89 -s -00 - 0,0700



2) 13-24-2-10-285A -i -00 -0,0900 ha

3) 13-24-2-10-285A -j -00 - 0,0746 ha



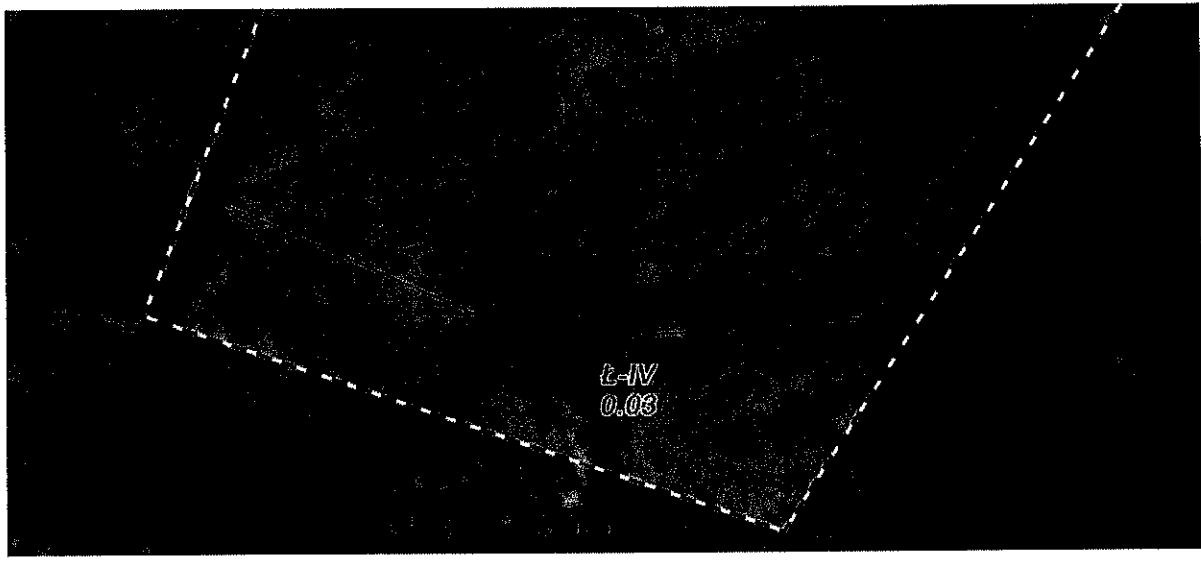
4) 13-24-2-10-138 -g -00 - 0,3000 ha



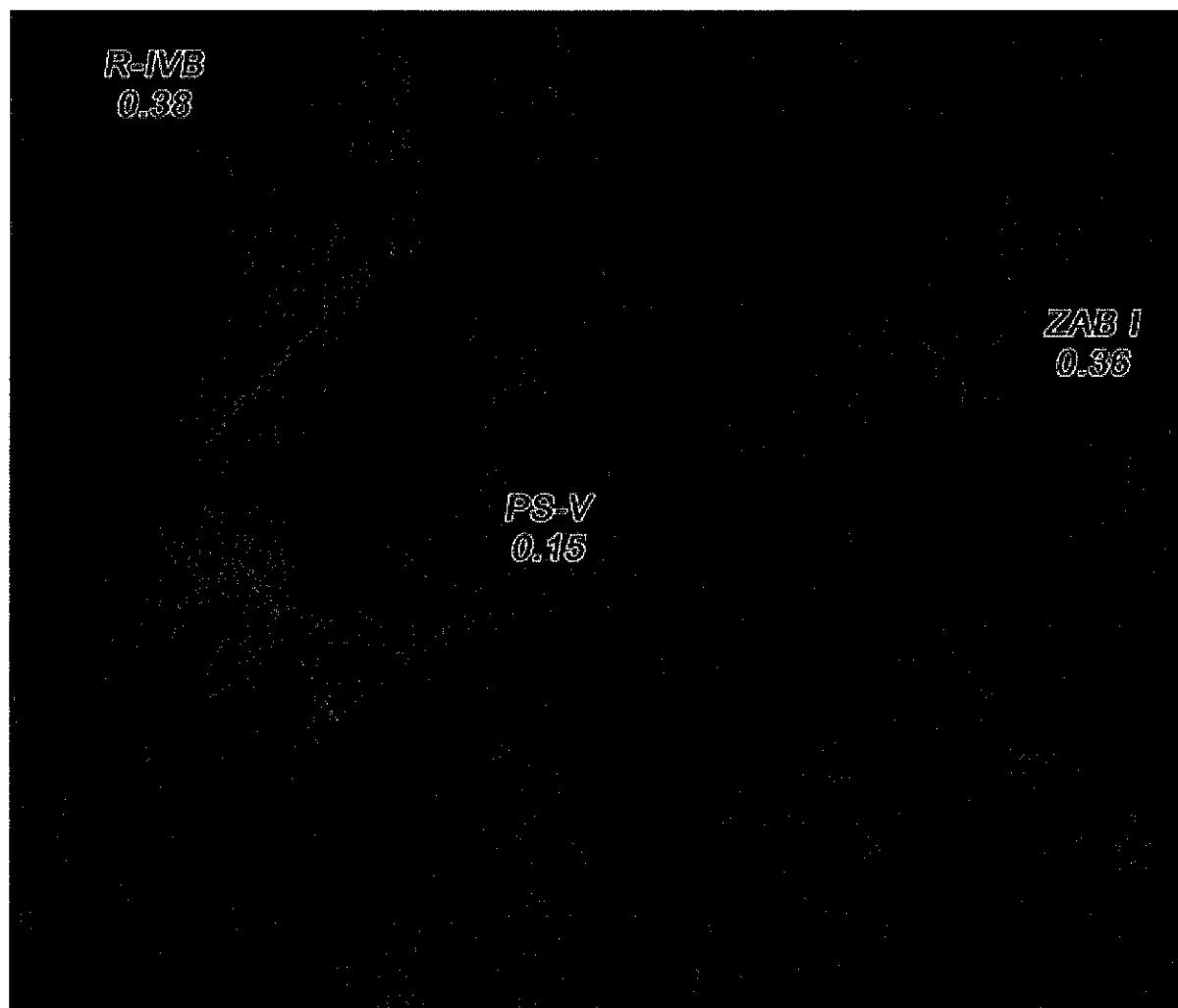
5) 13-24-2-15-31 -k -00 – 02600 ha



6) 13-24-2-09-229 -g -00 0,0340 ha



7) 13-24-2-09-258 -d -00 -0,1500 ha



8) 13-24-1-01-387 -c -00 - 0,3960 ha



9) 13-24-2-11-206 -b -00 – 0,3300 ha

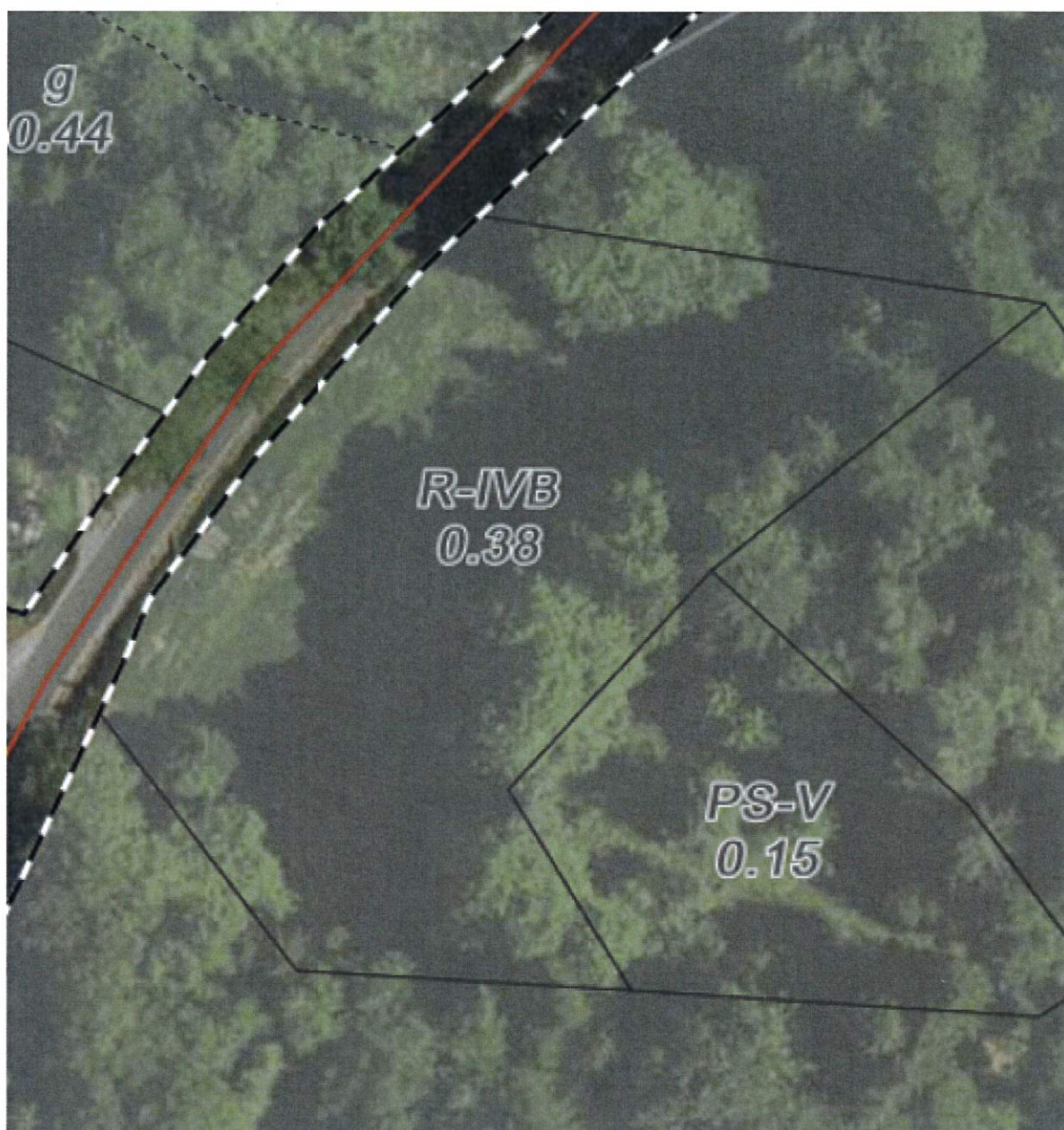


10) 13-24-2-09-18 -g -00 – 0,8300



11) 13-24-2-09-258 -g -00 (część)

0,3740 ha

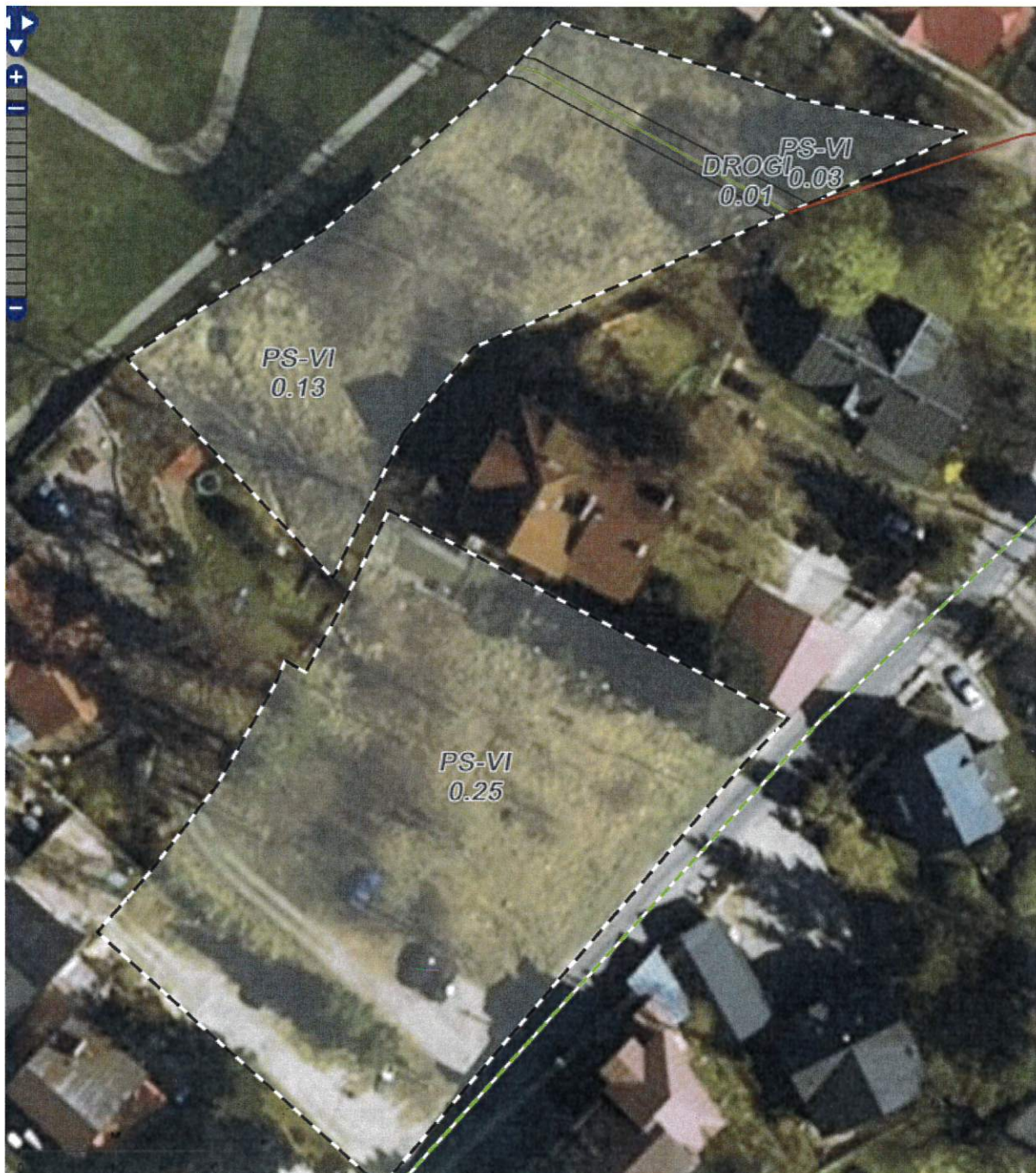


12) 13-24-2-09-251 -d -00 – 0,3472 ha



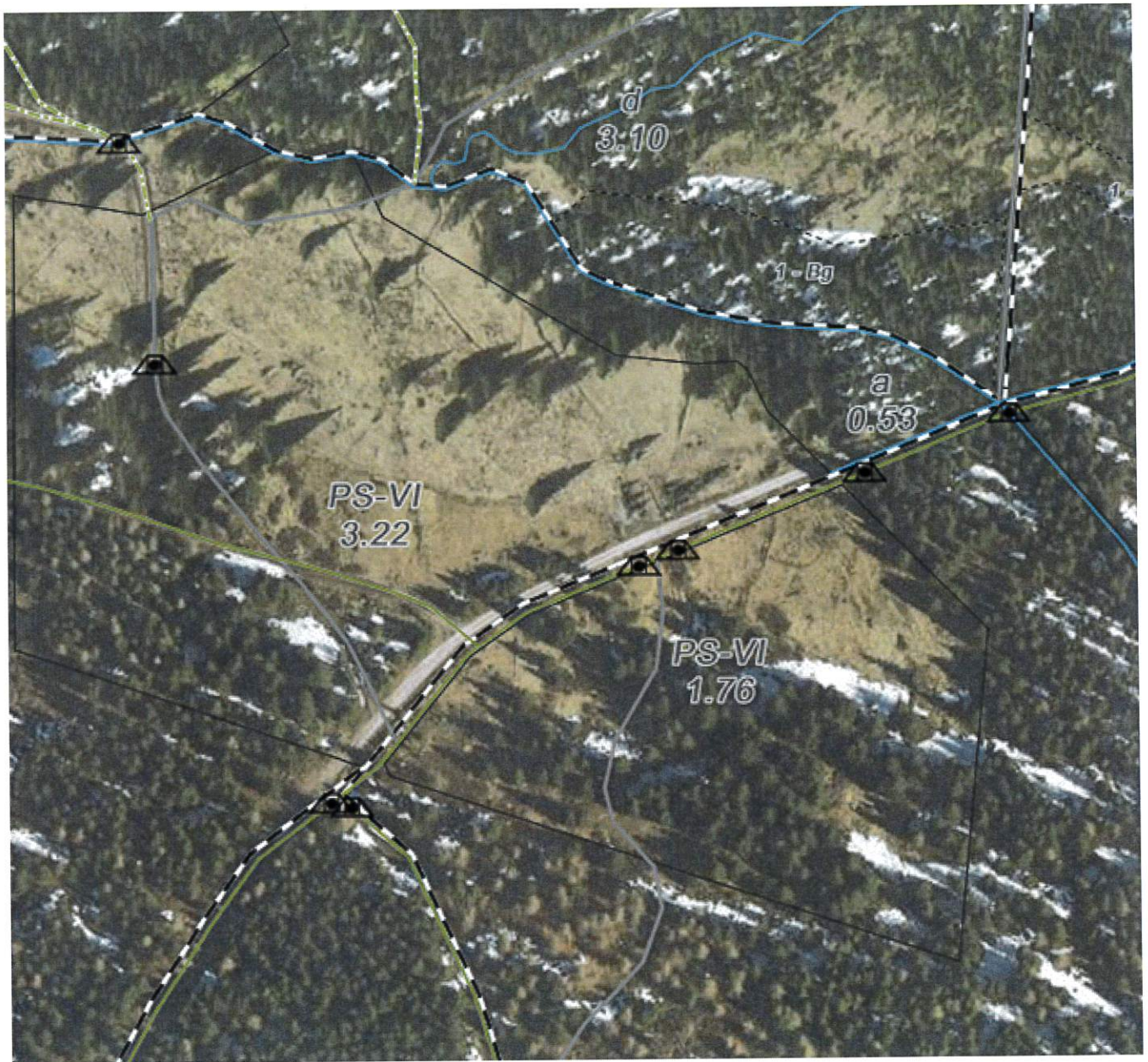
13) 13-24-1-06-323 -k -00 (część)-0,0284 ha

14) 13-24-1-06-323 -l -0,1306 ha



15) 13-24-1-03-206 -b -00 -3,2200 ha

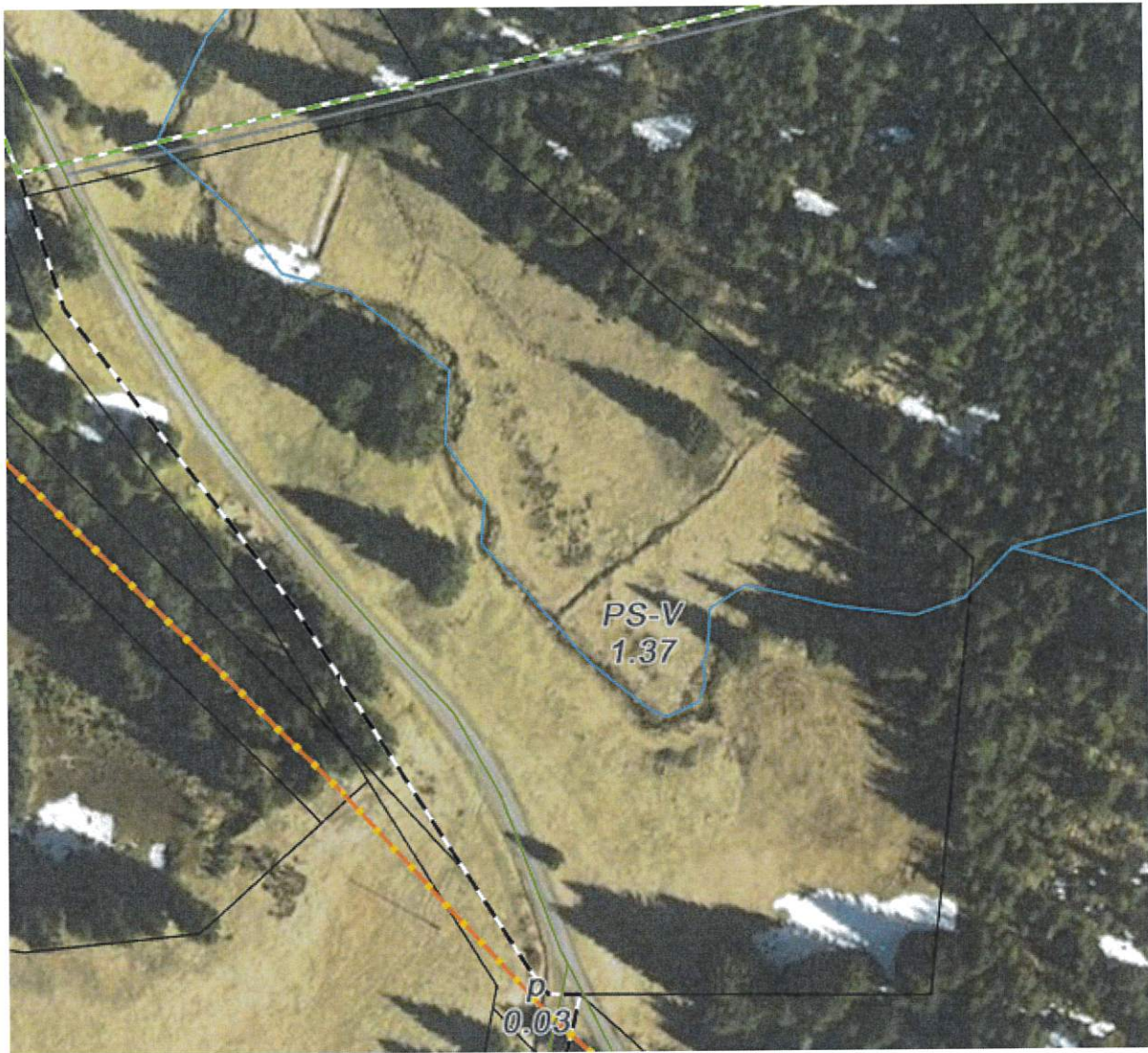
16) 13-24-1-03-211 -c -00 - 1,7600 ha



17) 13-24-1-03-252 -j -00- 0,3597 ha



18) 13-24-1-04-253 -d -00 – 1,3700 ha

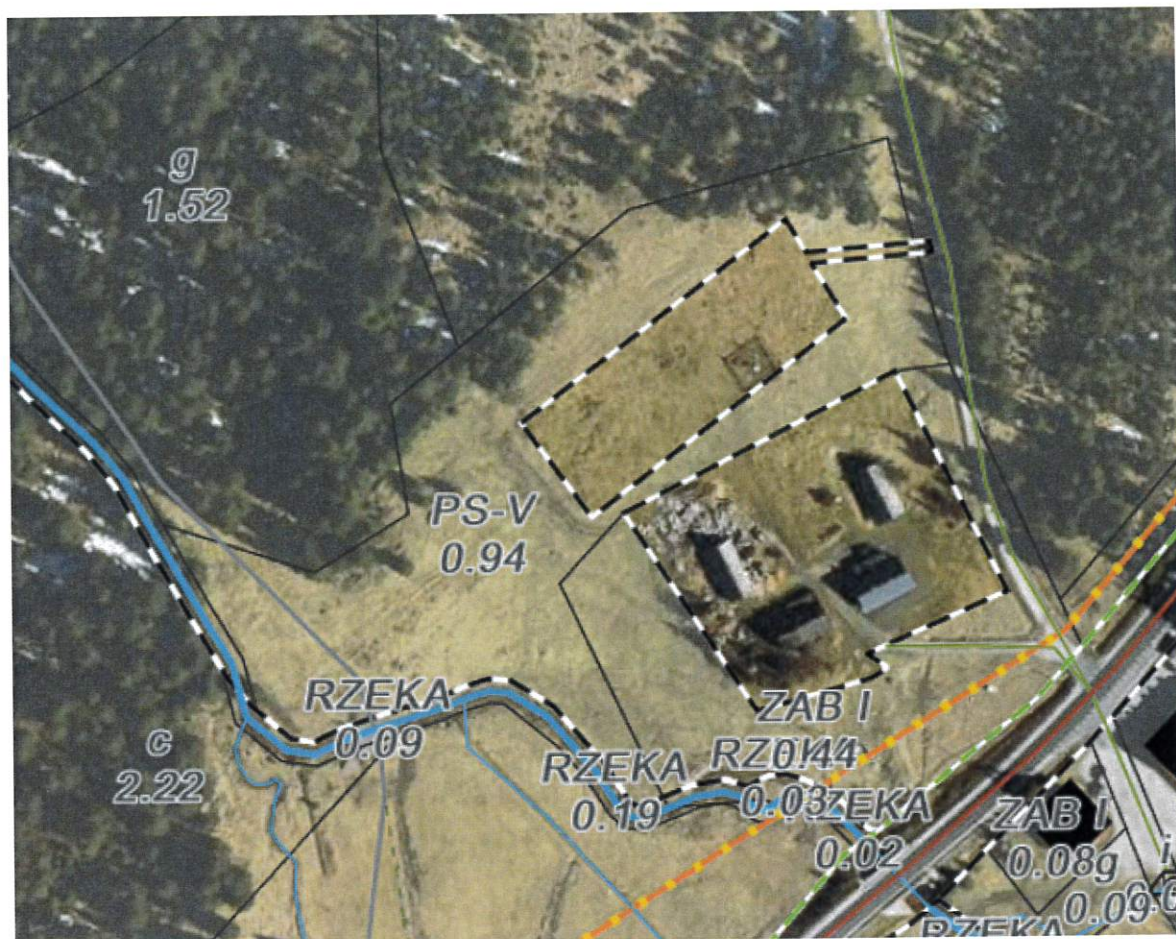


19) 13-24-1-06-159 -c -00 - 1,3698 ha

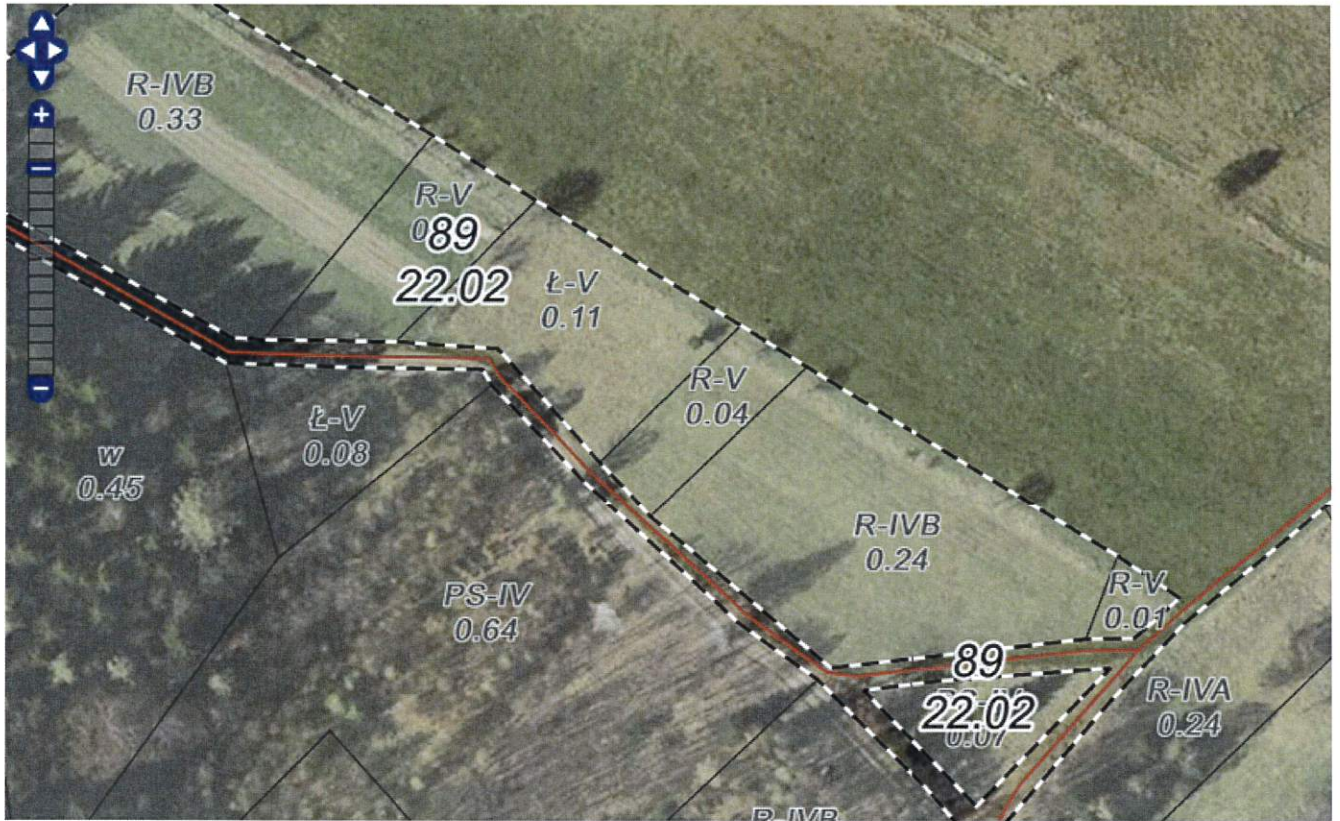


20) 13-24-1-06-181 - i - 00
21) 13-24-1-06-181 - i - 00

0,9300 ha
0,0060 ha



22)	13-24-2-16-89	-dx -00	0,0103 ha
23)	13-24-2-16-89	-m -00	0,3259 ha
24)	13-24-2-16-89	-n -00	0,0621 ha
25)	13-24-2-16-89	-r -00	0,2441 ha



26) 13-24-2-10-285A -k -00
27) 13-24-2-10-285A -l -00

0,2300 ha
0,0700 ha



28) 13-24-1-03-127 -o -00 - 0,3118 ha



29) 13-24-1-03-130 -h -00 0,1000 ha
30) 13-24-1-03-133 -g -00 0,7177 ha

