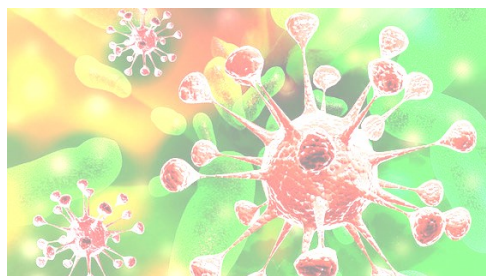
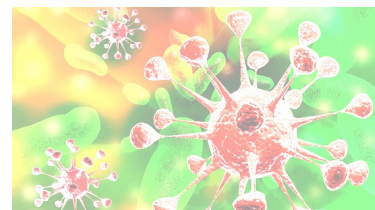




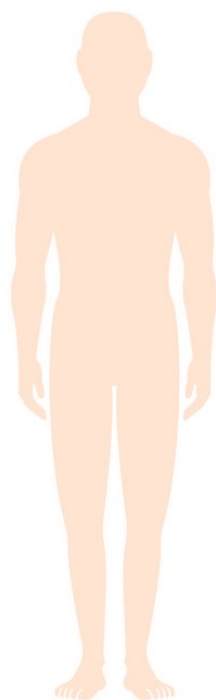
## How to recognise measles?



1. What is measles? Measles is an infectious disease that is caused by measles virus.



2. The source of infection: an ill man.



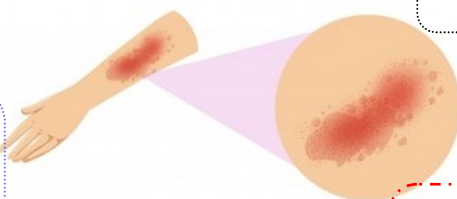
3. The routes of infection: airborne (runny nose, cough) and personal contact.

### Measles symptoms:

High fever lasts for 7 days.

After a few days there is maculopapular rash on the face and neck.

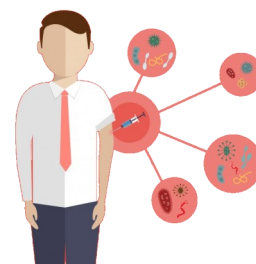
At the beginning: runny nose, cough, conjunctivitis with photophobia, tiny spots in the inside of the cheeks and tongue.



In the next 3 days the rash changes its place down from the head to the torso and then to the hands and feet.

### Prevention

- Compliance with the basic hygiene rules (washing and hand disinfection),
- The preventive vaccination (double vaccination immunizes fully; those who received only one dose of vaccination are recommended to vaccinate again).



The Provincial Sanitary—Epidemiological Station in Szczecin