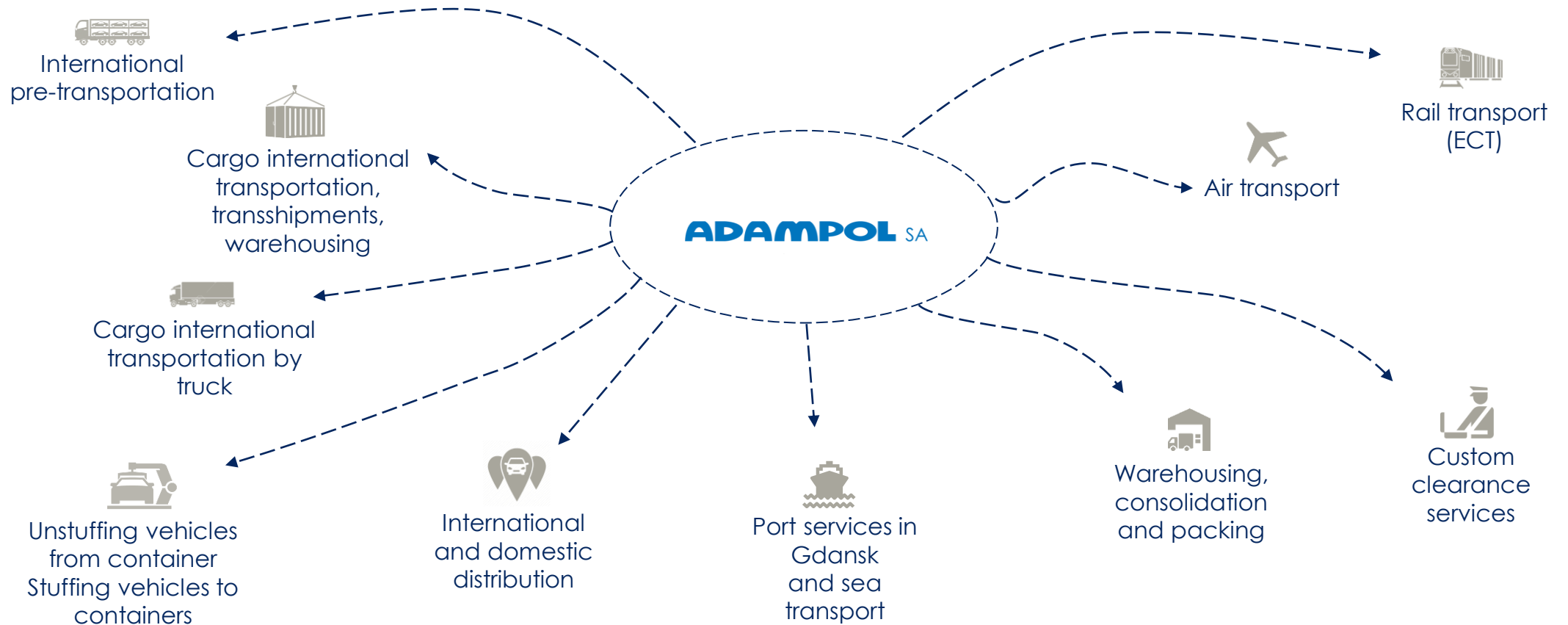


01

# Adampol S.A.





## THE SCOPE OF ADAMPOL'S ACTIVITY

# Adampol S.A. Branches

 HEADQUARTER

 LOGISTICS CENTERS

 OFFICES



# INTERMODAL TERMINAL ADAMPOL IN MAŁASZEWICZE

04

RAILROAD TRACKS

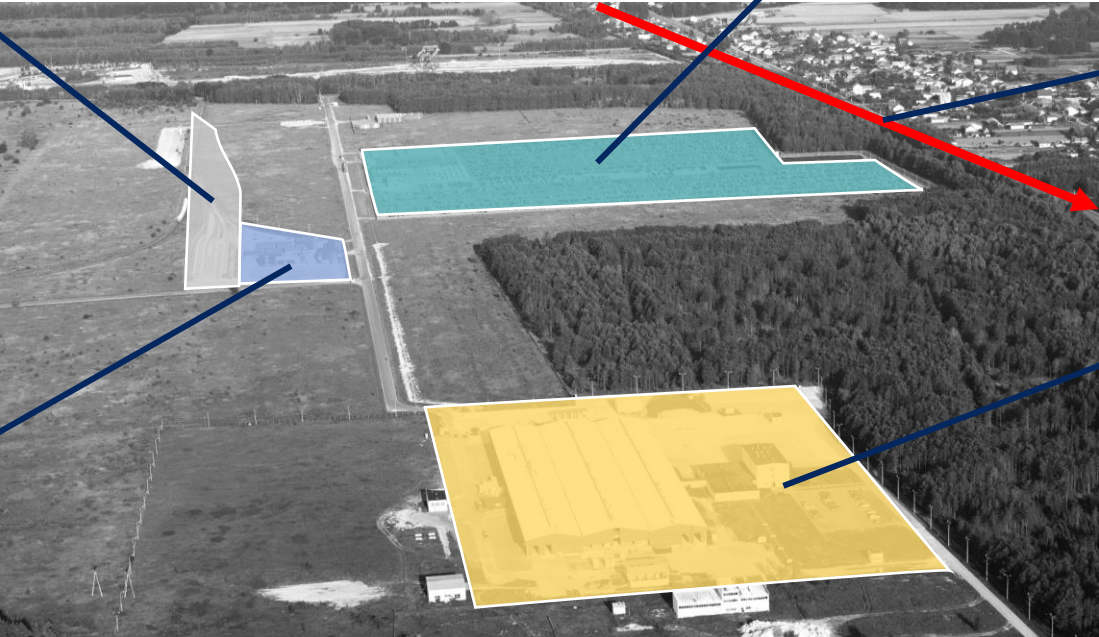
STORAGE AREA

FOR CONTAINERS AND CARS

THE ROAD TO  
THE EU BORDERS

SKD, PDI, WAREHOUSES

RAILWAY TERMINAL



# WAREHOUSE IN MAŁASZEWICZE

## Technical data:

Total area of storage:	13,381m <sup>2</sup>
Number of loading docks:	7
Number of gates:	2
Warehouse height:	6m
Inside temperature:	12 - 16 ° C
Floor covering:	industrial floor, chemically hardened
External walls:	laminated board, polyurethane foam core
Roof:	corrugated plate
Type of lighting:	rows of fluorescent lamps
Availability:	24/7
Heating source:	gas

Short- and long-term storage in warehouse  
Consolidation / deconsolidation of goods



## Additional storage area:

Tent warehouse 1:	1,000 m <sup>2</sup>
Tent warehouse 2:	2,000 m <sup>2</sup>





Jeep



HYUNDAI  
GLOVIS

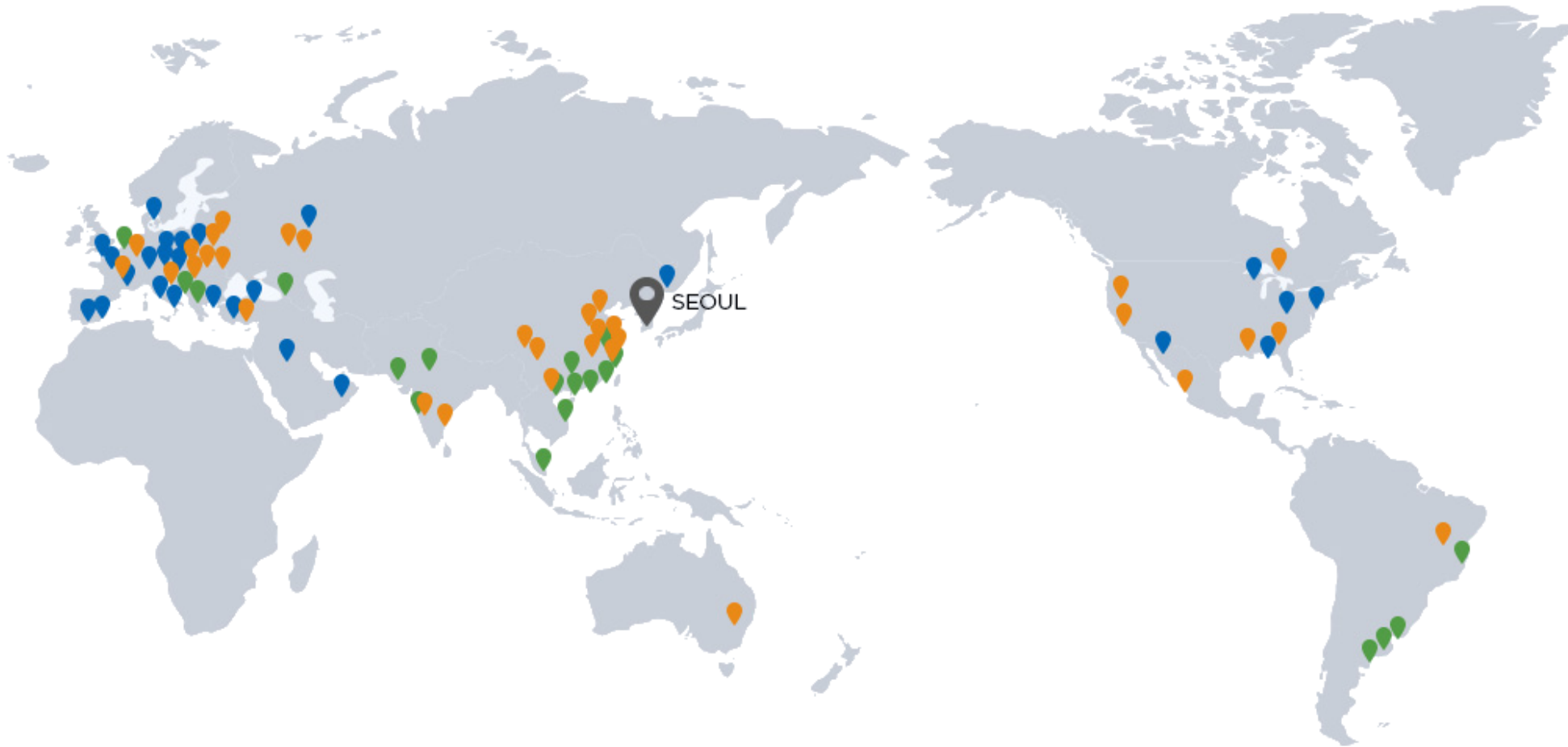
DAIMLER



IVECO

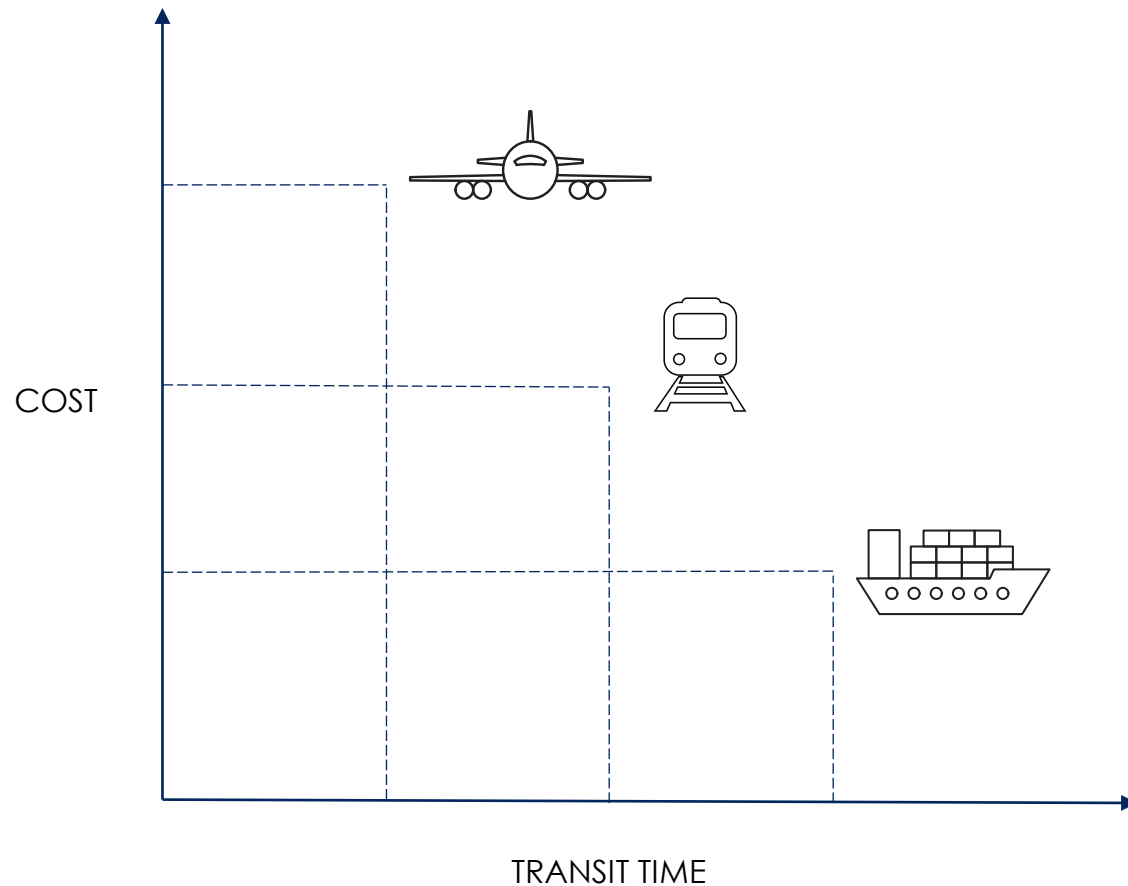
BRANDS WE COOPERATE WITH

📍 Corporation | 📍 Branch | 📍 Office



We are part of the Hyundai Glovis group. Thanks to this, we help our clients to act globally in their business.

# COMPARISON OF TRANSPORT MODELS



- ❑ **air transport** - the fastest and most expensive.
- ❑ **rail transport** - provides an optimal rate in relation to speed and cost.
- ❑ **sea transport** - the cheapest but the slowest.



# ECT SERVICE (Euro China Train)

ECT provides **regular intermodal rail transport** between the company's logistics center in Małaszewicze and major ports in China and Europe.

- We provide support for containers belonging to the carrier and the sender (COC / SOC).
- Trusted Chinese partners are able to deliver or pick up our customers' goods throughout China.
- ECT provides the best value for money and reduces transit times compared to other modes of transport.



# Euro China Train SERVICE (ECT)



Rail connections are conducted via the New Silk Road as well as the Trans-Siberian Railway.



# Ocean Connections





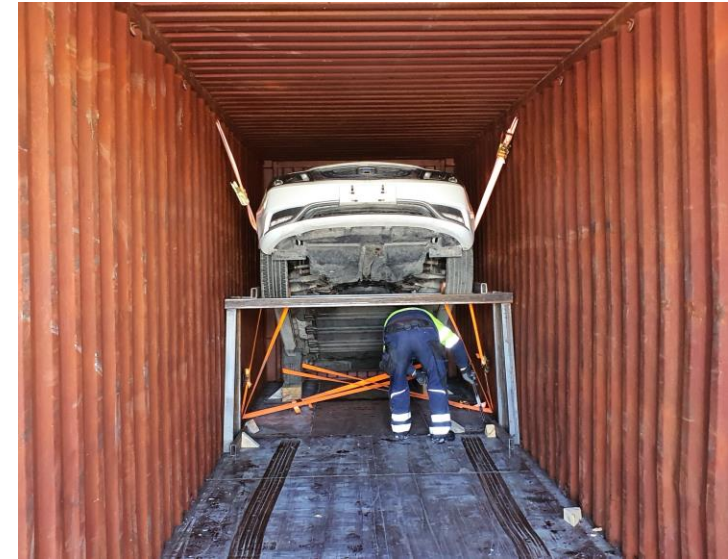
The ECT logo is displayed in white on a dark blue background. Below the logo, the text "TYPES OF CARGO" is written in large, white, sans-serif capital letters. In the top right corner, the number "12" is shown in black on a white background.



13




# TYPES OF CARGO





ONE BELT ONE ROAD



 +48 607 772 020

 [aguzman@adampolsa.com.pl](mailto:aguzman@adampolsa.com.pl)

**Adrian Guzman**

Project Department Manager

