

# **Plant Protection Organization of Bangladesh (NPPO)**

## **1. Notification of an IPPC official contact point**

The plant protection activities of the country at national level are under the Director of Plant Protection Wing of the Department of Agricultural Extension under the Ministry of Agriculture. The Director is the National Plant Protection Organization of Bangladesh (NPPO). He is responsible for implementing the International Standards for Phytosanitary Measures in Bangladesh.

Director, Plant Protection Wing is acting as IPPC official contact point..

-Official IPP EDITOR NOMINATION: Project Director, Strengthening Phytosanitary Capacity Project of Department of Agricultural Extension in Bangladesh is working as IPP editor from Bangladesh NPPO from July, 2011

## **2. Provision of Official Pest Reports:**

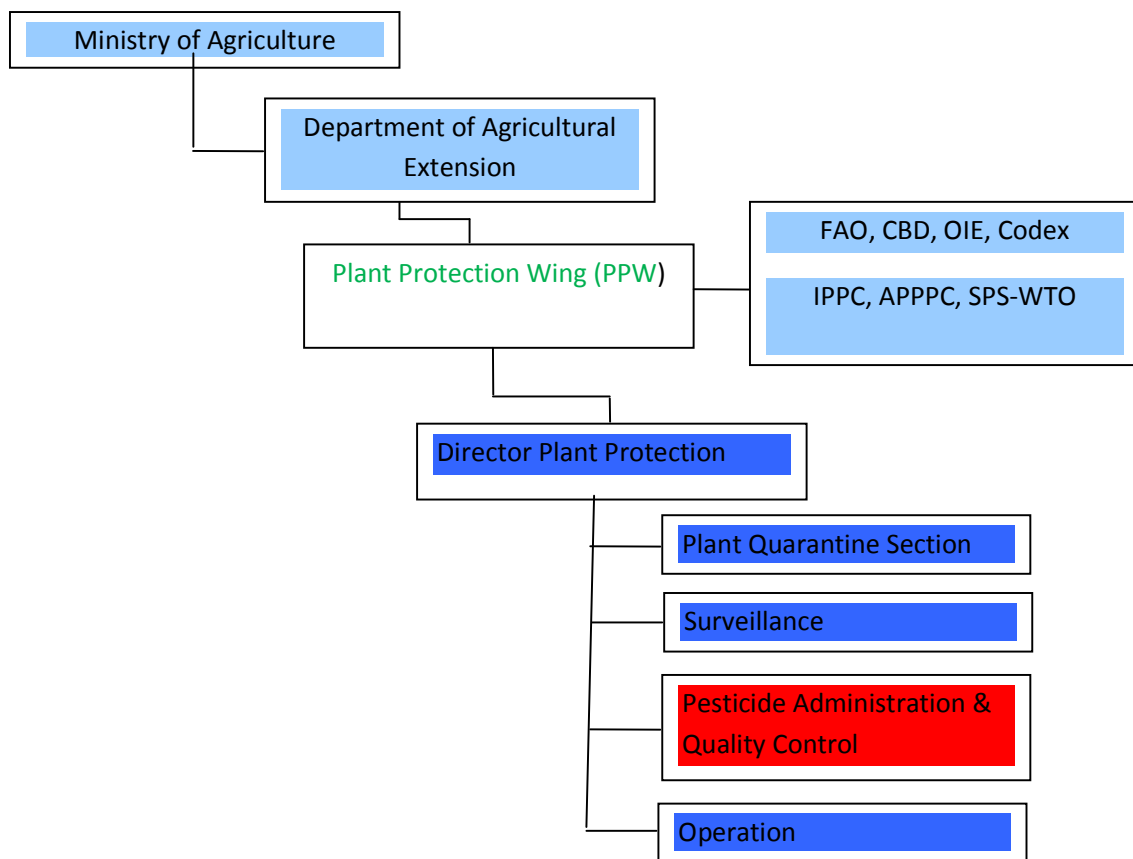
We don't have provision for uploading official pest reports. We have started preparing pest lists and after the completion of the lists we will upload the official pest reports.

-Recently we did not have outbreak of any pests so, we didn't require publishing of pest reports.

### 3. Description of the National Plant Protection Organization:

Director of Plant Protection Wing of the Department of Agricultural Extension under the Ministry of Agriculture is the National Plant Protection Organisation of Bangladesh (NPPO). He is responsible for implementing the International Standards for Phytosanitary Measures in Bangladesh.

#### Plant protection organization chart



#### **4. Phytosanitary requirements, restrictions and prohibitions:**

The existing plant quarantine legislation known as “Destructive Insects and Pests Rules, 1966 (Plant Quarantine) was framed as per provisions delineated under Sub-section (I) of Section-3, Section-5 of the Destructive Insect and Pests Act, 1914 (II of 1914). Plant Quarantine Act, 2011 has been approved by the Parliament in March, 2011. Formulation of rules under the new Act, is yet to be formulated. Phytosanitary requirements, restrictions and prohibitions describe in the “Destructive Insects and Pests Rules is set to updating. After the completion of updating, we will upload the legislations as well as Phytosanitary requirements, restrictions and prohibitions.

#### **5. List of Point of Entry Points:**

Plant quarantine services in Bangladesh have been running by the Plant quarantine Section which belongs to Plant Protection Wing of DAE under the Ministry of Agriculture. Plant Quarantine Section is headed by Deputy Director (Plant Quarantine). He is assisted by Plant Pathologist, Quarantine Pathologists, Quarantine Entomologist, Plant Quarantine Inspectors and the junior technical and supporting staff. Including six new land border check posts, at present 26 plant quarantine stations are functioning in the following entry points of Bangladesh-

##### **a) Airports:**

1. Hazrat Shah Jalal International Airport, Dhaka.
2. Hazrat Shah Amanat International Airport, Chittagong.
3. Osmani International Airport

##### **b) Seaports:**

1. Chittagong Seaport, Chittagong.
2. Mongla Seaport, Khulna.

##### **c) Land Border Check Post:**

1. Benapole, Jessore
2. Darshana, Chuadanga.
3. Tamabil, Sylhet.
4. Burimari, Lalmonirhat.
5. Teknaf, Cox's Bazar
6. Akhaura, Brammanbaria
7. Hilli, Dinazpur
8. Sonamosjid, Chapinababgonj
9. Rohan pur, Raishshi
10. Bhomra, Satkhira.
11. Bangla Bandha, Panchagarh.
12. Jakiganj, Sylhet
14. Bibirbazar, Comilla
15. Kamalpur, Jamalpur
16. Belunia, Feni
17. Betli (Fultali), Moulvi bazaar
18. Chaltapur, Moulvibazar
19. Haluaghat, Mymensingh
20. Birol, Dinajpur

**D) River Port:**

Narayangonj.

**E) ICD, Kamalapur, Dhaka.**

List of Point of Entry Points are updated but not uploaded.

**6. List of regulated pests:**

We have taken program for conducting surveillance and listing of pests. After the completion of listing of pests and survey we will include all the quarantine and regulated non-quarantine pest in our rules and will make available to all. Currently we have regulated pests on limited crops. The lists are shown below:

SL NO.	CROPS NAME & SCIENTIFIC NAME	RESTRICTIONS OR PROHIBITIONS OF PEST
1	Potato ( <i>Solanum tuberosum</i> )	Black Wart ( <i>Synchytrium endobioticum</i> ), Golden Nematode ( <i>Globodera rostochiensis</i> ), Colorado Potato Beetle ( <i>Leptinotarsa decemlineata</i> ).
2	Rubber ( <i>Hevea brasiliensis</i> )	American Leaf Blight ( <i>Microcyclus ulei</i> ), <i>Phytophthora Botryoisia</i>
3	Sugarcane ( <i>Saccharum officinarum</i> )	Sugarcane Mosaic Virus, Sugarcane Fiji disease, Pine apple disease ( <i>Ceratocystis paradoxa</i> ), Sereh disease, Ratoon virus, Grassy Shoot Virus, Gummosis ( <i>Xanthomonas vasculorum</i> )
4	Tobacco ( <i>Nicotiana tabacum</i> )	Tobacco moth, <i>Ephestia elutella</i>
5	Citrus ( <i>Citrus sp.</i> )	Malsecco ( <i>Deuterophoma tracheiphila</i> )
6	Coffee ( <i>Cofea 5imiles</i> )	Coffee rust ( <i>Hemileia vastatrix</i> ), Coffee borer ( <i>Stephanoderes hampai</i> ), American leaf spot ( <i>Mycena citricolor</i> )
7	Banana ( <i>Musa sapientum</i> )	Moko disease ( <i>Pseudomonas solanacearum</i> ), Root nematode ( <i>Radophilus 5imiles</i> ), Black leaf streak ( <i>Mycosphaerella fijiensis</i> )
8	Coconut ( <i>Cocos nucifera</i> )	Red Ring ( <i>Rhadinaphelenchus cocophilus</i> ), Lethal Yellowing, Kaincope, Cadang Cadang, Bronze Leaf Wilt, Root Wilt, Guam Coconut, Coconut Wilt, Leaf Scorch, Tatipaka
9	Groundnut ( <i>Arachis hypogaea</i> )	Groudnut Rust ( <i>Puccinia arachidis</i> ), Scab ( <i>Sphaceloma arachidis</i> ), Groundnut Leaf Mosaic Virus
10	Maize ( <i>Zeamays</i> )	Bacterial Wilt, Bacterial Leaf Blight

		( <i>Erwinia stewartii</i> ), Downy Mildew
11	Tea ( <i>Camellia sinensis</i> )	Phloem Necrosis Virus
12	<i>Alium</i> spp.	Onion Smut ( <i>Urocystis cepulae</i> ), Stem nematode ( <i>Ditylenchus dipsaci</i> )
13	Cotton ( <i>Gossypium</i> spp.)	
14	Sorghum ( <i>Sorghum vulgare</i> )	Bacterial Blight ( <i>Pseudomonas andropogonis</i> ), Bacterial Streak ( <i>Xanthomonas holcicola</i> )
15	Wheat ( <i>Triticum</i> spp.)	Powdery mildew ( <i>Erysiphe graminis</i> ), Yellow ear rot ( <i>Anguina tritici</i> , <i>Corynebacterium tritici</i> ), Septoria Leaf Blotch ( <i>Septoria tritici</i> ), Leaf blight ( <i>Alternaria triticina</i> ), Molya disease ( <i>Heterodera avenae</i> ), Canary grass ( <i>Phalaris minor</i> )
16	Chrysanthemum ( <i>Chrysanthemum</i> spp.)	Absolutely prohibited in Bangladesh
17	Orchid (Orchidaceae family)	Bacterial rot ( <i>Erwinia cypripedii</i> ), Cymbidium mosaic virus, Cattely flower break virus
18	Sunflower ( <i>Helianthus annus</i> )	Downy mildew ( <i>Plasmopara halstedii</i> )
19	Forest Tree Seeds	Gypsy moth ( <i>Lymantria dispar</i> ), Scleroderris canker disease ( <i>Gremmeniella abietina</i> ), Oak wilt diseases ( <i>Ceratocystis fagacearum</i> )
	<b>Fruits:</b>	
20	<b>Fresh Fruits</b>	<b>Fruit flies and scale insects</b>
21	Mango plants and seeds ( <i>Mangifera indica</i> )	Woody gall, Scaly bugs
22	Grass Seed	<i>Claviceps</i> sp., <i>Helminthosporium</i> sp., <i>Fusarium</i> sp., and <i>Erwinia rathayi</i>
23	Oil Palm ( <i>Elaeis guineensis</i> )	Lethal Yellowing, Kaincope, Cadang Cadang, Bronze Leaf wilt, Coconut Wilt

24	Soybean ( <i>Glycine max</i> )	Soybean mosaic virus, Tobacco ring spot virus, Soybean Cyst Nematode ( <i>Globodera glycine</i> )
25	Chilli ( <i>Capsicum annum</i> )	Chilli mosaic virus and anthracnose ( <i>Colletotrichum tematium</i> )
26	Pepper ( <i>Piper Sp.</i> )	Importation of pepper plant and vegetative materials is prohibited.
<b>Vegetable Seeds:</b>		
27	Beet ( <i>Beta vulgaris</i> )	Phoma beta and Beet rust ( <i>Uromyces betae</i> )
28	Cabbage and Cauliflower ( <i>Brassica oleraceae</i> )	Black leg disease, <i>Alternaria circinaus</i> and <i>A. herculae</i>
29	Cucumber ( <i>Cucumis sativa</i> )	<i>Mycosphaerella melonis</i> and Cucumber Mosaic virus
30	Lettuce ( <i>Lettuce sativa</i> )	Lettuce Mosaic virus
31	Pea ( <i>Pisum sativum</i> )	Bacterial blight ( <i>Pseudomonas syringae</i> )
32	Tomato ( <i>Lycopersicum esculentum</i> )	Tomato canker, Bacterial canker
33	Sweet Potato ( <i>Ipomoea batatas</i> )	Sweet potato dwarf, Sweet potato internal cork, Sweet potato feathery mottle, Sweet potato Russet crack
34	Silk Worm Eggs ( <i>Bombyx mori</i> )	Muscardine spores ( <i>Botrytis bassiana</i> )

## 7. Notification of Emergency Actions:

As we did not intercept any quarantine and regulated non-quarantine pest we were not required to notify and taking emergency actions. But in respect of our export mainly for the consignments of vegetables sometimes we get non-compliance notifications for we take prompt action.

*(Opracowanie Konsulatu Honorowego w Dhace)*