

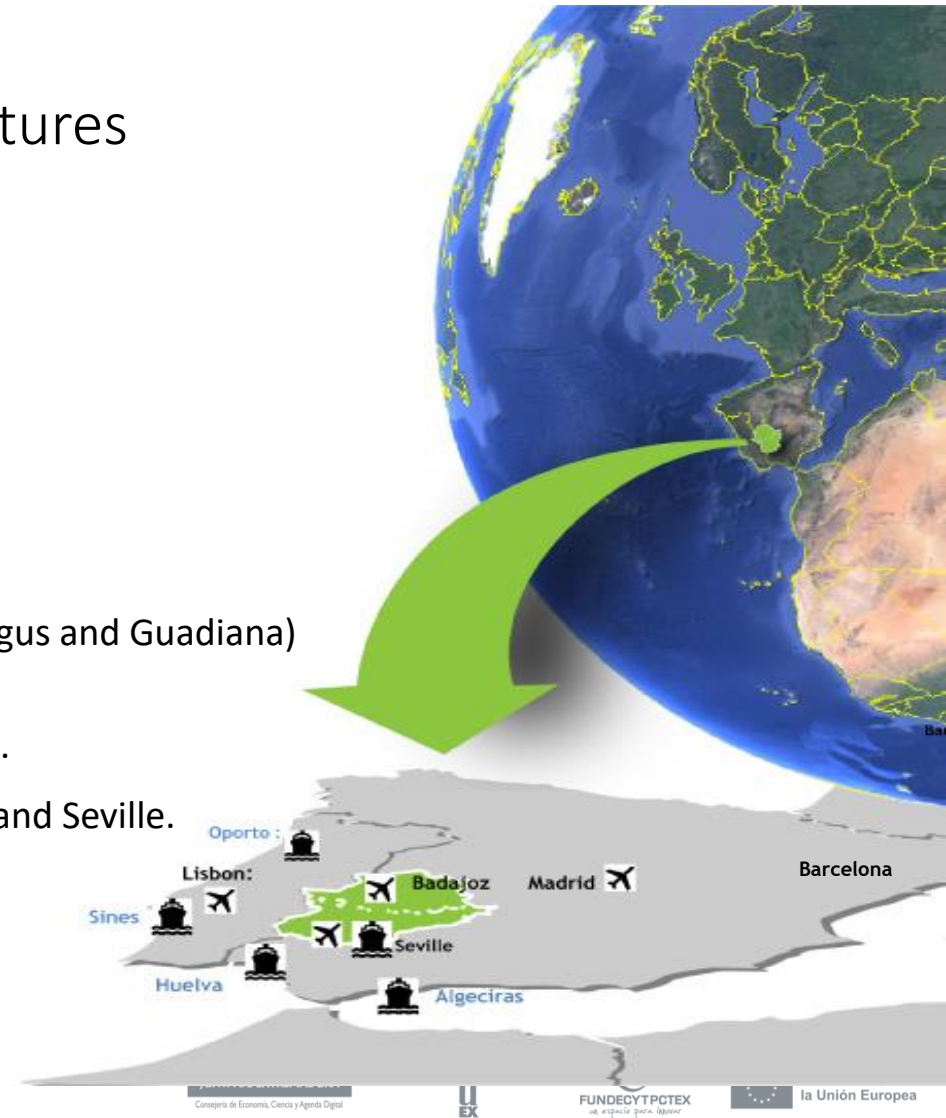


Mutual Learning Event: How to implement EU Missions approach?

Irene Palomino Antolín
Extremadura region

Location and Geographic Features of Extremadura

- **Two provinces:**
Cáceres and Badajoz
- **Main cities:**
Badajoz, Mérida, and Cáceres
- **Varied landscape:**
mountains, plains, and significant rivers (Tagus and Guadiana)
- **Cultural heritage:**
3 sites declared World Heritage by UNESCO.
- Strategic location between Lisbon, Madrid and Seville.



41.600 km²

Surface area

1.100.000

Inhabitants

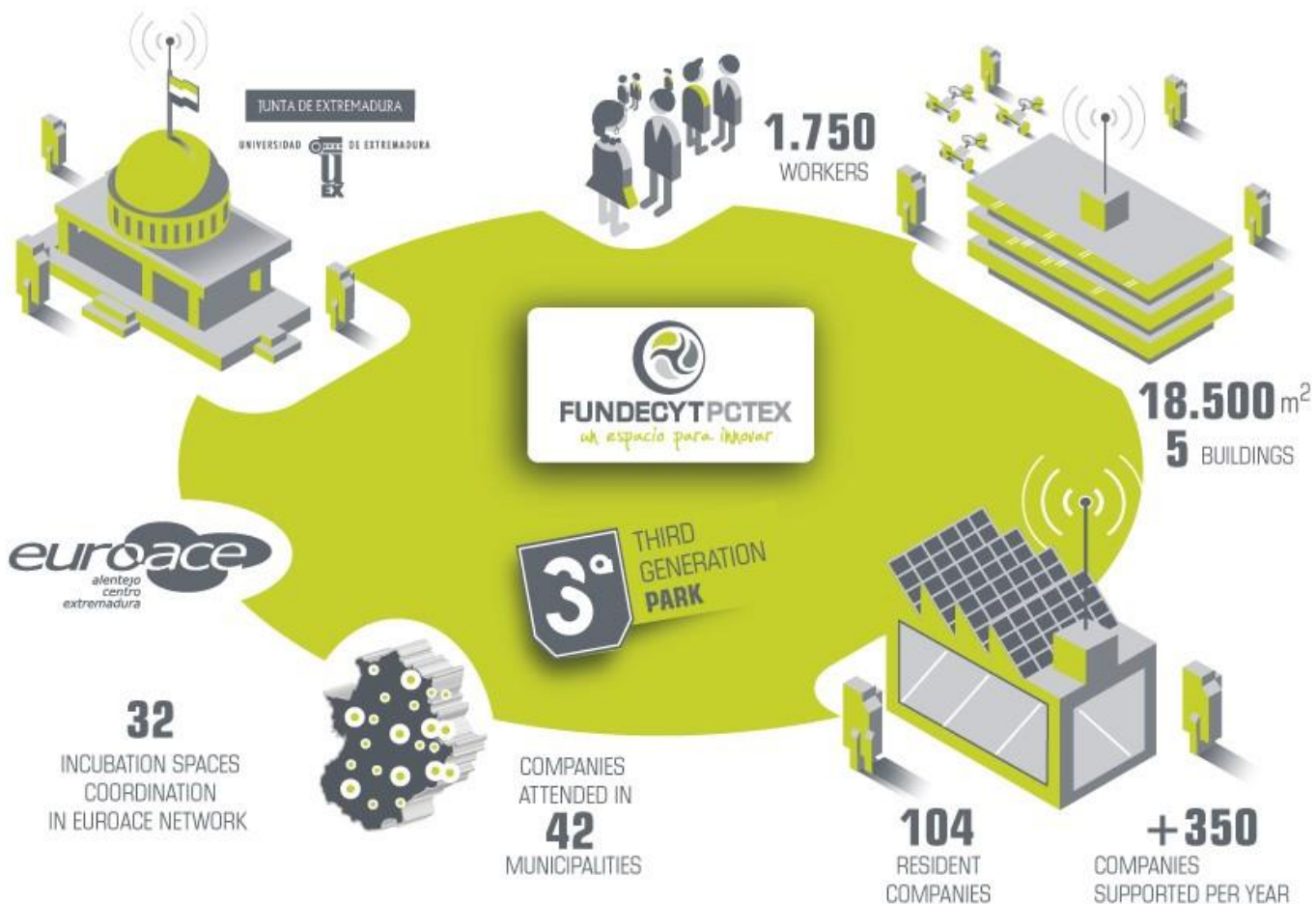
30%

Territory nature reserves
and protected areas

25%

Water reservoir of Spain





Public-Private Collaboration in RIS3 Extremadura 2027

Encourage knowledge

Encourage knowledge and technology transfer between research organizations and companies.

Develop R&D&I

Develop R&D&I projects aligned with RIS3 Extremadura 2027.



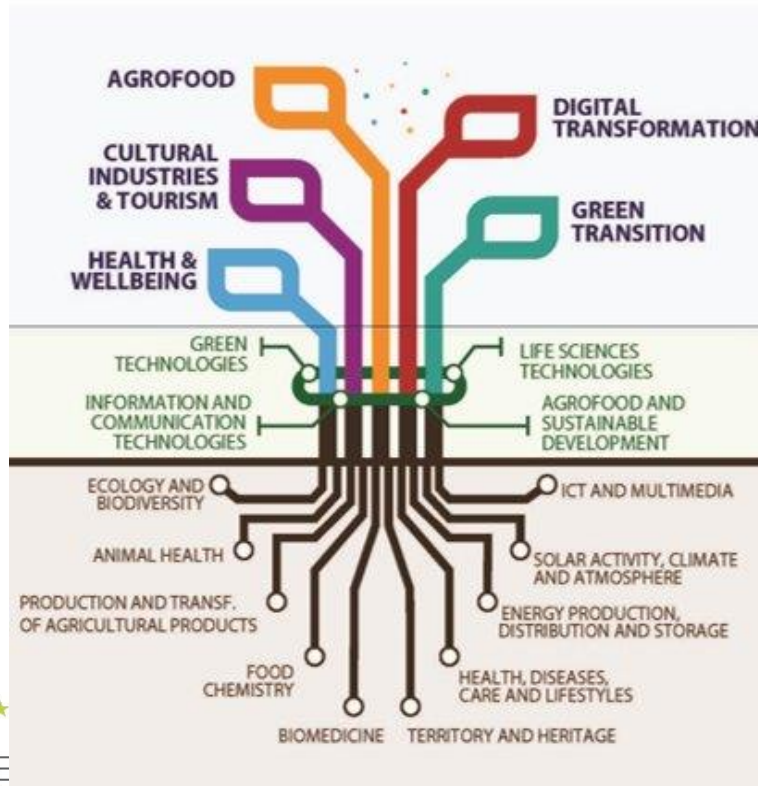
Establish public-private

Establish public-private consortia and laboratories for specific technologies and research lines.

Create and strengthen

Create, implement, and strengthen Joint Research Units (JRU).

The Extremadura Specialization Pattern 2021-2027



- Economic Priorities
- Technological Priorities (KETs)
- Scientific Priorities
- Smart Specialization Approach
 - Leverage scientific-technological capabilities
 - Interconnect sectors effectively
 - Guide investments, resources, and activities
- Market Opportunities
 - Capitalize on local, national, and international markets
 - Foster regional socio-economic development

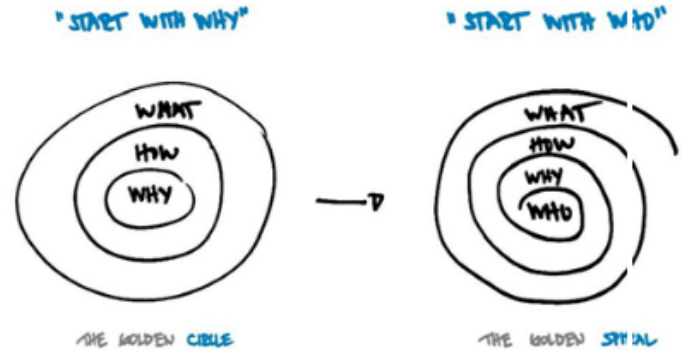
Intensive Agriculture



LIVING LABS ???



Stakeholder engagement





Scoping is key

What will the living lab do **for whom & why?** (mission)

Which problem are we trying to solve? (goals)

Where? (context)

What kind of activities are we going to perform?

Who do we need?

Why do we need them?

What's expected from them?

When and how often?

What's in for them?



Who will I be shaking hands with?

Remember the three layers of a LL?

Quadruple Helix	Stakeholder group / Macro	Sub stakeholder group / Meso	Personas / Micro
Private Sector	Farming	farming organizations	director
Private Sector	Farming	???	farmers
Private Sector	Farming	land owners	land owners
Private Sector	Farming	land owners	shareholders of land
Private Sector	International organizations	funding organizations	program managers
Academia	Marine Institute	Environmental science department	head of department
Academia	Marine Institute	Students Union	president
Academia	Atlantic Technology University	IT Sligo	heads of department
Academia	Atlantic Technology University	IT Sligo	chair of environmental/science/society
Academia	Atlantic Technology University	IT Sligo	student success officer
Academia	Atlantic Technology University	IT Sligo	green campus committee
Academia	Atlantic Technology University	IT Sligo	sustainability officer

Stakeholder Value Table

STAKEHOLDER NAME	VALUE PROVIDED	IMPORTANCE LEVEL TO SH	IMPORTANCE LEVEL TO YOU	STAKEHOLDER KPI / KII

FACILITATORS



WANTED

Thank you for your attention!

Irene Palomino Antolín

irene.palomino@fundecyt-pctex.es/irene.palomino@juntaex.es



Financiado por
la Unión Europea

JUNTA DE EXTREMADURA



FUNDECYT PCTEX