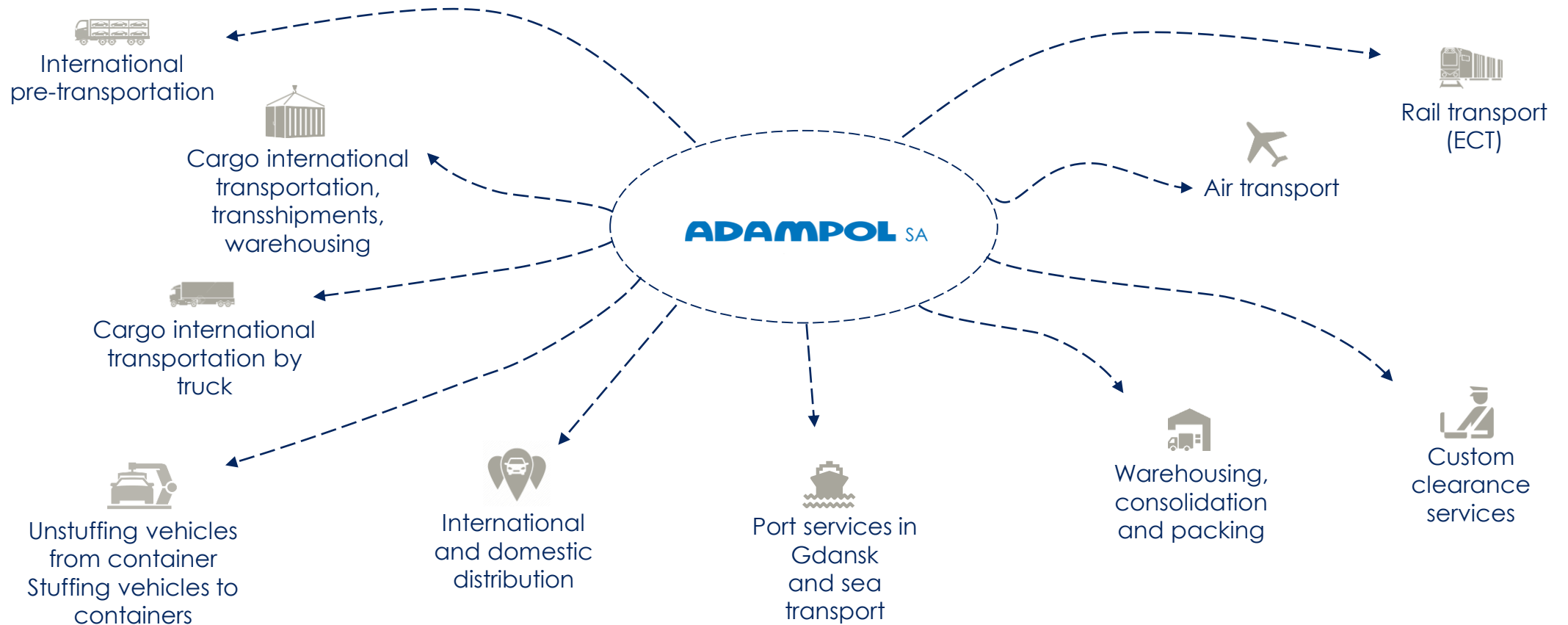


01

Adampol S.A.





THE SCOPE OF ADAMPOL'S ACTIVITY

LOKALIZACJE ODDZIAŁÓW ADAMPOL S.A.

 HEADQUARTER

 LOGISTICS CENTERS

 OFFICES



INTERMODAL TERMINAL ADAMPOL IN MAŁASZEWICZE

04

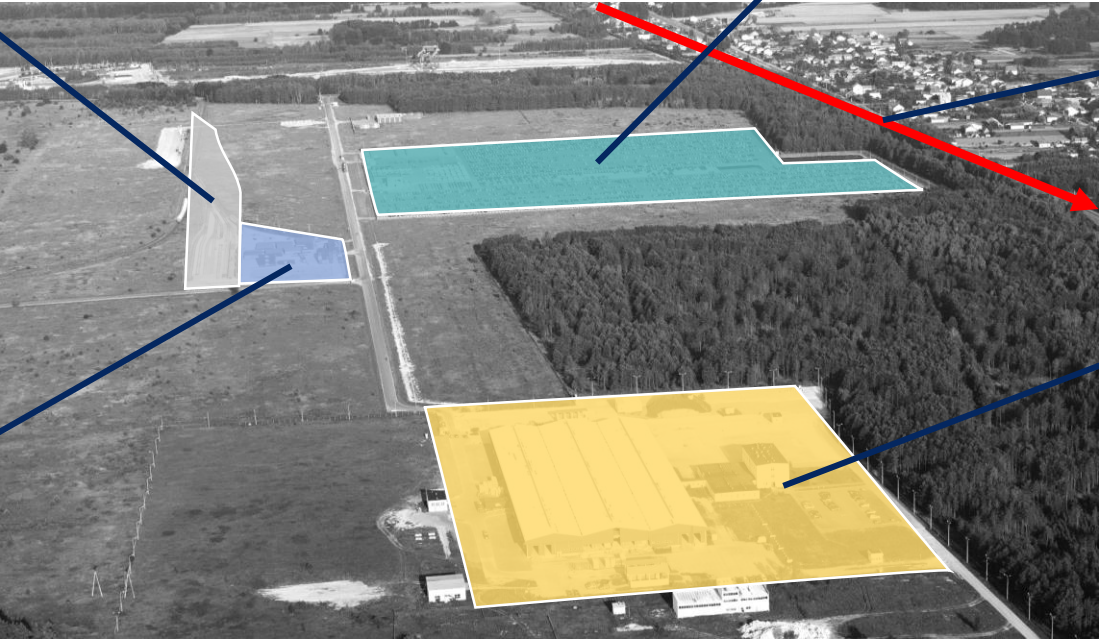
RAILROAD TRACKS

STORAGE AREA
FOR CONTAINERS AND CARS

THE ROAD TO
THE EU BORDERS

SKD, PDI, WAREHOUSES

RAILWAY TERMINAL



WAREHOUSE IN MAŁASZEWICZE

Technical data:

Total area of storage:	13,381m ²
Number of loading docks:	7
Number of gates:	2
Warehouse height:	6m
Inside temperature:	12 - 16 ° C
Floor covering:	industrial floor, chemically hardened
External walls:	laminated board, polyurethane foam core
Roof:	corrugated plate
Type of lighting:	rows of fluorescent lamps
Availability:	24/7
Heating source:	gas

Short- and long-term storage in warehouse
Consolidation / deconsolidation of goods



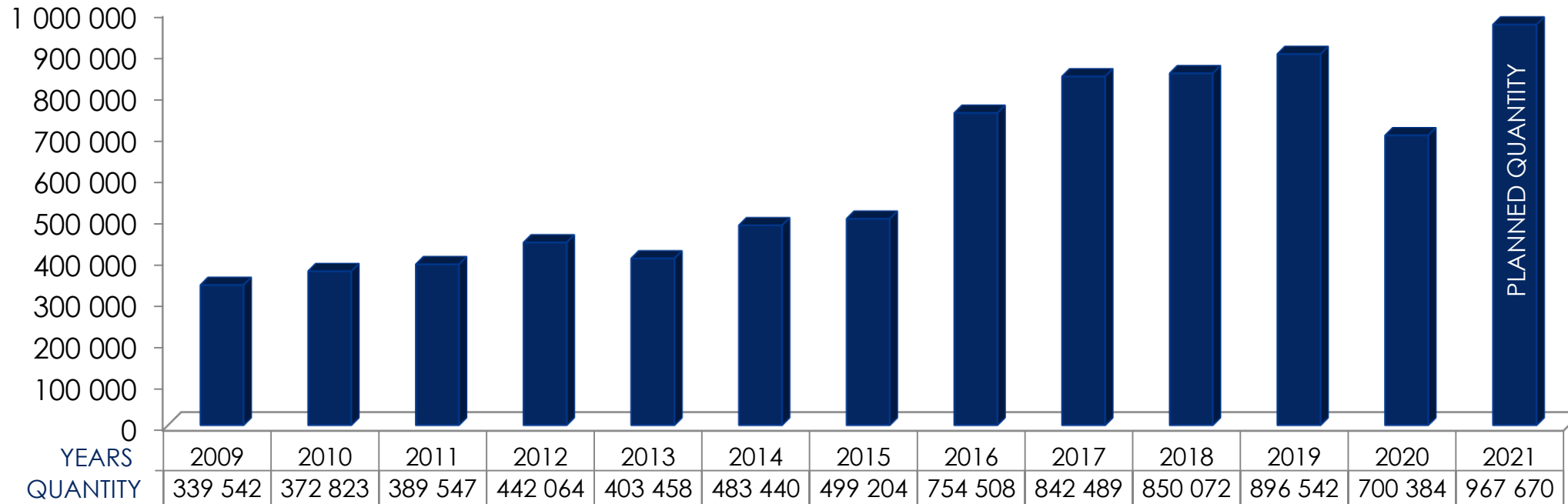
Additional storage area:

Tent warehouse 1:	1,000 m ²
Tent warehouse 2:	2,000 m ²



PASSENGER VEHICLES TRANSPORTED BY ADAMPOL GROUP 2009-2020

The total number of vehicles transported (2009-2020): **7,941,743** (including the planned number for 2021)





Jeep



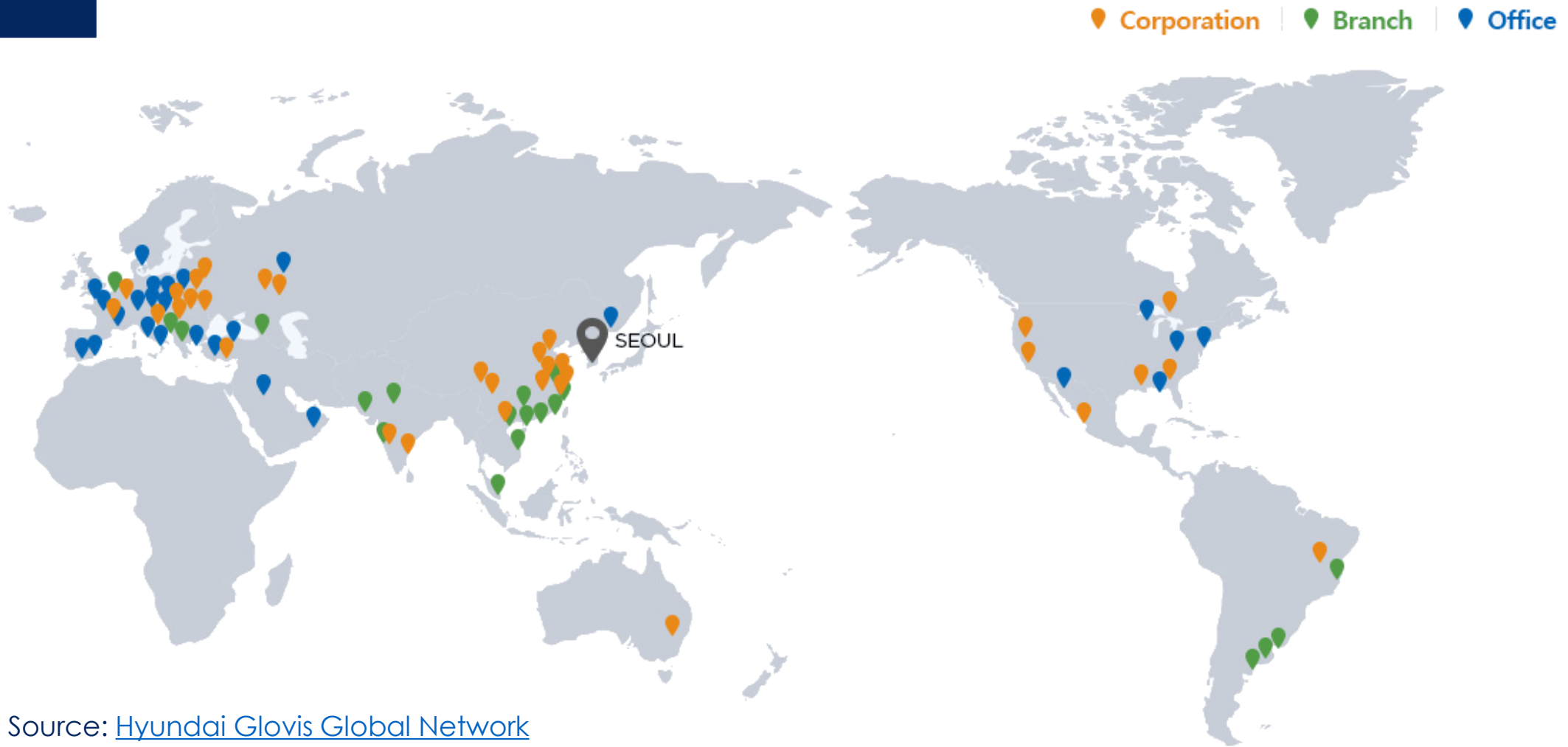
HYUNDAI
GLOVIS

DAIMLER



IVECO

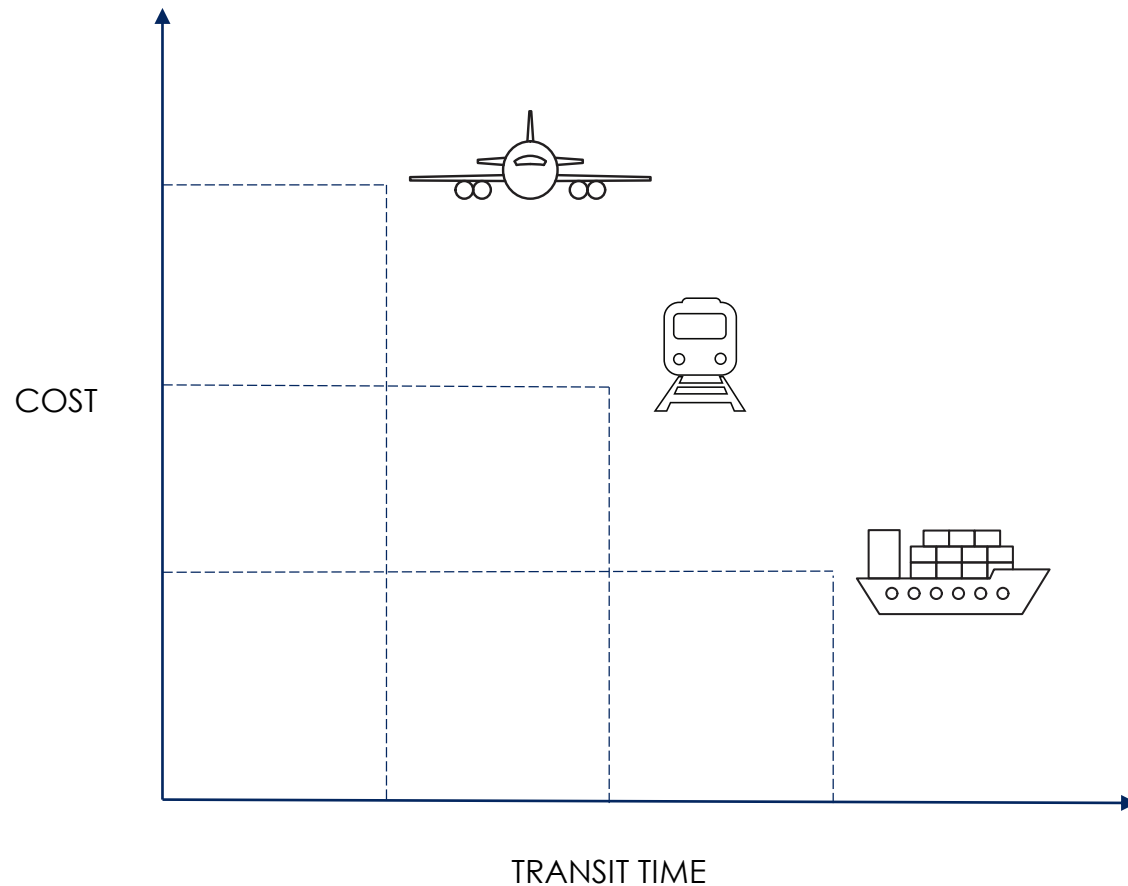
BRANDS WE COOPERATE WITH



Source: [Hyundai Glovis Global Network](#)

We are part of the Hyundai Glovis group. Thanks to this, we help our clients to act globally in their business.

COMPARISON OF TRANSPORT MODELS



- ❑ **air transport** - the fastest and most expensive.
- ❑ **rail transport** - provides an optimal rate in relation to speed and cost.
- ❑ **sea transport** - the cheapest but the slowest.

ECT SERVICE (Euro China Train)

ECT provides **regular intermodal rail transport** between the company's logistics center in Małaszewicze and major ports in China and Europe.

- We provide support for containers belonging to the carrier and the sender (COC / SOC).
- Trusted Chinese partners are able to deliver or pick up our customers' goods throughout China.
- ECT provides the best value for money and reduces transit times compared to other modes of transport.



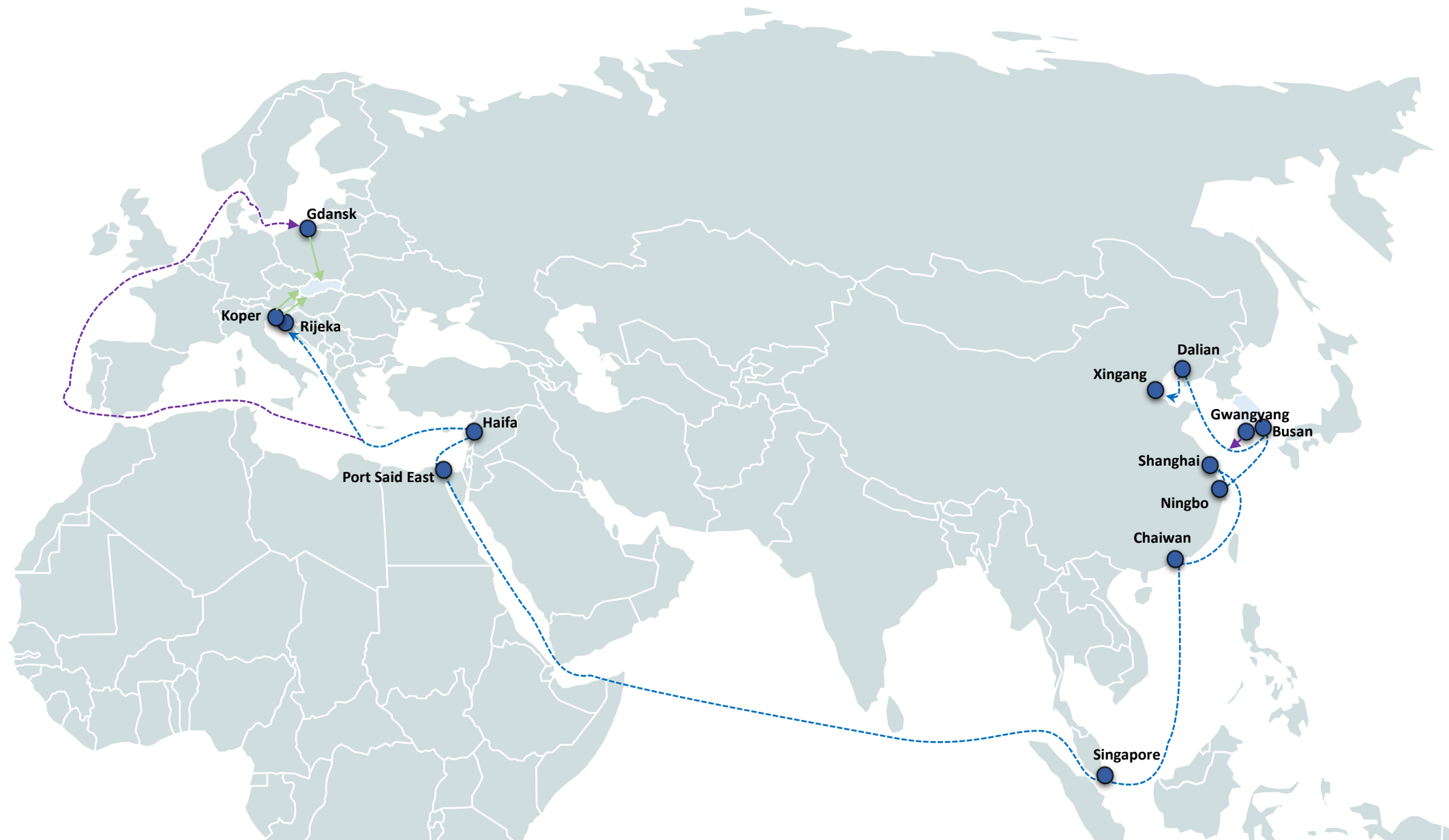
Euro China Train SERVICE (ECT)



Rail connections are conducted via the New Silk Road as well as the Trans-Siberian Railway.



Ocean Connections





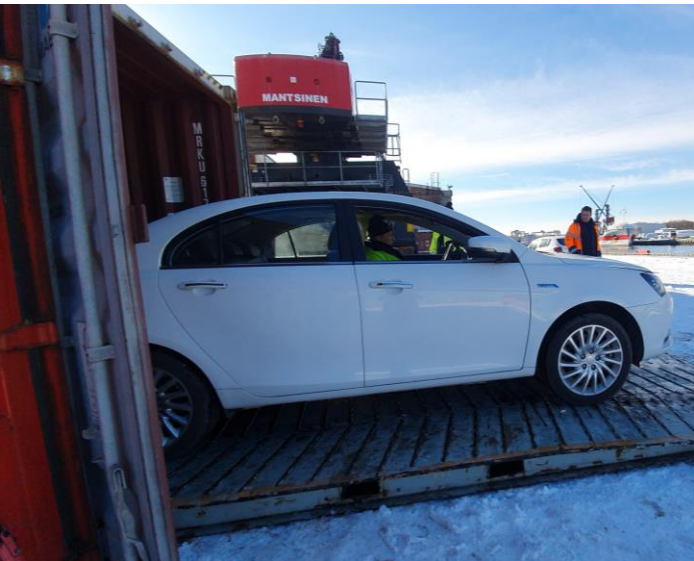
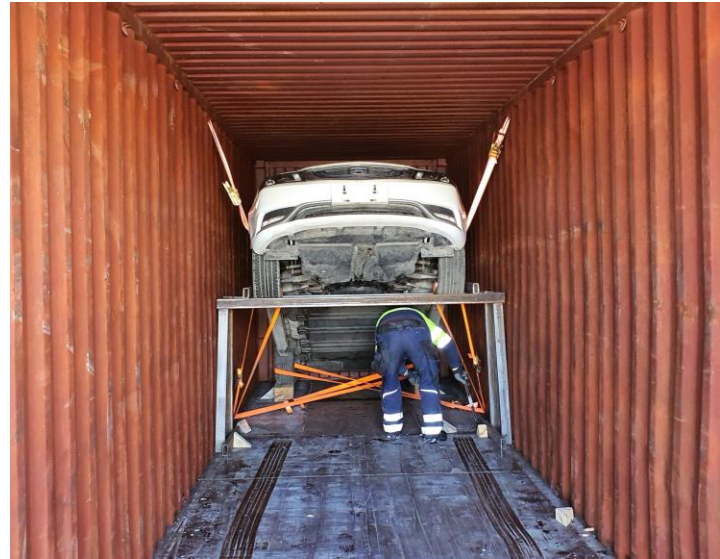
ECT

13

TYPES OF CARGO



TYPES OF CARGO





ONE BELT ONE ROAD



+48 607 772 020



aguzman@adampolsa.com.pl

Adrian Guzman

Project Department Manager

