



CNH Italia S.p.A.

MADE IN ITALY

CASE

CNH Italia S.p.A.

Viale della Nazioni 85 - 41100 Modena - Italia

Type model
Typ
Type

WX185

Type approval number
Number

Product identification Number (PIN)
Identifizierungsnummer
Numero d'identificazione

NSUWX185N7LB02222

Total Permissible mass
Zulassungsgesamtschicht

20500

Permissible axle 1 load
Zulassung Achsel 1

12000

Permissible axle 2 load
Zulassung Achsel 2

12000

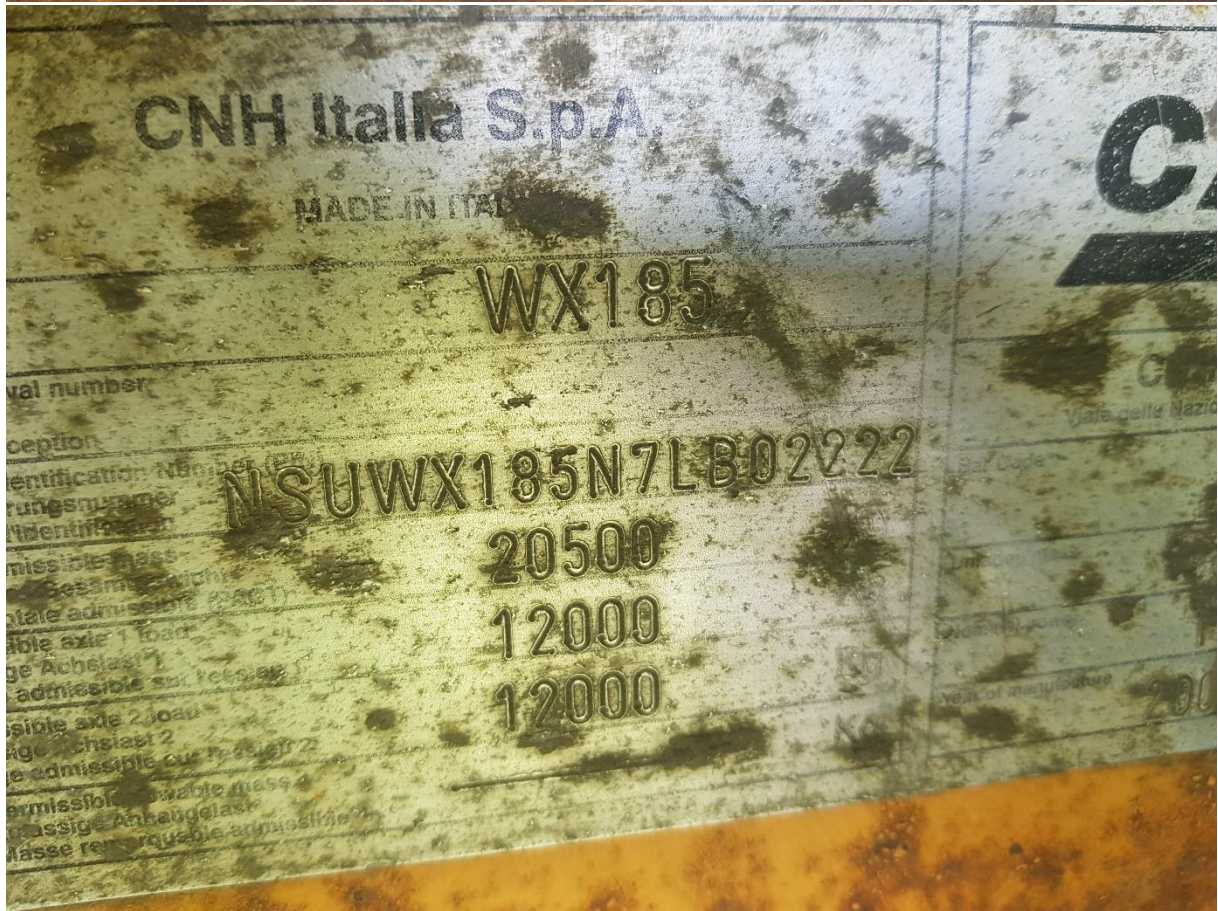
Permissible towable mass
Zulassung Anhängelast

Permissible towable mass
Masse remorque admissible



200

87-46738



CNH Italia S.p.A.

MADE IN ITALY

WX185

Type approval number

Product identification Number (PIN)

NSUWX185N7LB02222

Total Permissible mass

20500

Permissible axle 1 load

12000

Permissible axle 2 load

12000

Permissible towable mass

Permissible towable mass

Permissible towable mass

Permissible towable mass

Permissible towable mass

Permissible towable mass

Permissible towable mass

Permissible towable mass



CNH Italia S.p.A.
Viale della Nazioni

200



















