



The National Centre
for Research and Development

Key elements of a successful proposal

11th May, 2021

BSP

BUSINESS & SCIENCE
POLAND



**Horizon Europe – Culture & Creativity
Matchmaking event 11 May 2021**





The National Centre
for Research and Development

Most typical types of projects

Presentation based on the EC materials, incl. standard application form for RIA & IA

Project types

Research and innovation action (RIA)

Activities to establish new knowledge or to explore the feasibility of a new or improved technology, product, process, service or solution.

Innovation action (IA)

Activities to produce plans and arrangements or designs for new, altered or improved products, processes or services.

Coordination and support actions (CSA)

Activities that contribute to the objectives of Horizon Europe. This excludes R&I activities, except for 'Widening participation and spreading excellence'





Maximum funding rates

| Type of Action | Funding rate* |
|---------------------------------|--|
| Research and innovation action | 100% |
| Innovation action | 70% (except for non-profit legal entities, where a rate of up to 100% applies) |
| Coordination and support action | 100% |

*Exceptions possible





The National Centre
for Research and Development

Proposal template



Application form (proposal template)

Two parts:

- **Part A** (web-based forms) is generated by the IT system. It is based on the information entered by the participants through the submission system in the Funding & Tenders Portal.
- **Part B** is the narrative part that includes three sections that each correspond to an evaluation criterion. Part B needs to be uploaded as a PDF document following the templates downloaded by the applicants in the submission system for the specific call or topic.





Key principles

- Project **within the scope of a work programme topic**
- Idea ambitious and **beyond the state of the art**
- **Interdisciplinarity, gender** dimension and **open science** practices taken into account + no significant harm to the environment
- Contribution to the **outcomes and impacts described in the work programme**
- Plan for the **dissemination and exploitation** including communication activities
- Good quality of the **work plan, resources and participants**



1. Excellence

Objectives and ambition

Methodology

- gender issues
- open science
- data management



The National Centre
for Research and Development

2. Impact

Project's pathways towards impact

- impact towards work programme
- requirements and barriers
- scale and significance of the outcomes

Measures to maximise impact

- dissemination
- exploitation
- communication

IPR strategy



2. Implementation



Work plan & resources

- Gantt & Pert charts
- work packages
- deliverables & milestones
- risks
- budget

Capacity of participants and consortium as a whole





The National Centre
for Research and Development

Evaluation Criteria



Three criteria

‘**Excellence**’, ‘**Impact**’ and ‘**Quality and efficiency of the implementation**’.

- **Open Science** practices assessed as part of the scientific methodology in the excellence criterion
- **New approach to impact**: Key Impacts Pathways (KIPs)
- The assessment of the **quality of applicants** is assessed under ‘implementation’, rather than as a separate binary assessment of operational capacity
- No assessment of **management structures**.



Evaluation criteria (RIAs and IAs) 1

Proposals must be within the scope of the work programme topic

EXCELLENCE

- ✓ Clarity and pertinence of the **project's objectives**, and the extent to which the proposed work is ambitious, and goes beyond the state-of-the-art.
- ✓ Soundness of the proposed **methodology**, including the underlying concepts, models, assumptions, inter-disciplinary approaches, appropriate consideration of the **gender dimension** in research and innovation content, and the quality of **open science practices** including sharing and management of research outputs and engagement of citizens, civil society and end users where appropriate.



Evaluation criteria (RIAs and IAs) 2

Proposals must be within the scope of the work programme topic

IMPACT

- ✓ Credibility of the **pathways** to achieve the expected **outcomes and impacts** specified in the work programme, and the likely scale and significance of the contributions due to the project.
- ✓ Suitability and quality of the **measures to maximize expected outcomes and impacts**, as set out in the dissemination and exploitation plan, including communication activities.



The National Centre
for Research and Development

Evaluation criteria (RIAs and IAs) 3

Proposals must be within the scope of the work programme topic

QUALITY AND EFFICIENCY OF THE IMPLEMENTATION

- ✓ Quality and effectiveness of the **work plan**, assessment of risks, and appropriateness of the effort assigned to work packages, and the resources overall.
- ✓ Capacity and role of each **participant**, and extent to which the **consortium** as a whole brings together the necessary expertise.





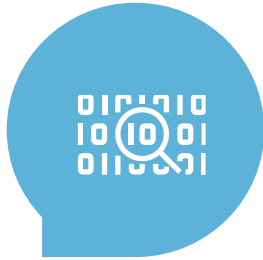
Ethics review

Ethics is an **integral part** of research from beginning to end, and **ethical compliance** is essential to achieve real research excellence.

Review process is carried out systematically in all Horizon Europe proposals, based on a **self-assessment** included in the proposal.

Ethical research conduct implies the application of fundamental ethical principles and legislation in all possible domains of research. This includes the adherence to the highest standards of **research integrity** as described in the **European Code of Conduct for Research Integrity**.





Security scrutiny

Checked **systematically** in all Horizon Europe proposals - based on a **self-assessment** included in the proposal.

The focus is on:

- Whether the proposal uses or generates **EU classified information**
- Potential of **misuse** of results (that could be channeled into crime or terrorism)
- Whether activities involve information or materials subject to **national security restrictions**





The National Centre
for Research and Development

Eligibility & submission rules



General rules

- Applications must be submitted before the call deadline via the Funding & Tenders Portal
- Applications must be **complete, readable, accessible and printable**, and include a plan for the exploitation and dissemination of results, unless provided otherwise in the specific call conditions.

Proposal page limit

- RIAs and IAs type of actions: limit for a full application is **45 pages**
- CSAs: limit is **30 pages**
- First stage proposals: limit is **10 pages**

Exceptions, if any, would be specified in the call text.





Eligibility

Consortium composition (collaborative projects)

- at least one independent legal entity established in a Member State, and
- at least two other independent legal entities each established either in a different Member State or an Associated Country.

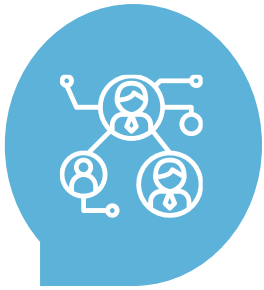
Gender Equality Plan (applicable only from 2022)

Participants that are public bodies, research organisations or higher education establishments from Members States and Associated countries **must have a gender equality plan**, covering minimum process-related requirements.

- A self-declaration will be requested at proposal stage (for all types of participants).
- Included in the entity validation process (based on self-declaration)



Become an expert – evaluator!



The best way to learn is by doing

You can register in the EU experts database at any time.

<https://ec.europa.eu/info/funding-tenders/opportunities/portal/screen/work-as-an-expert>



Thank you for the attention

Ewa Kocińska-Lange

NCBR Office in Brussels – Business &
Science Poland:



Rue Belliard 40

www.ncbr.gov.pl

www.zpbsp.com



ewa.lange@ncbr.gov.pl



+ 32 486 274 874

+ 48 509 215 353



The National Centre
for Research and Development

Contact:

