



**Ministerstwo Gospodarki Morskiej
i Żeglugi Śródlądowej**

Enhanced protection of Eastern cod stock

Poland's proposals

BALTFISH TWG meeting, Warsaw, 1 June 2016

Why we propose the measures

Eastern cod stock in worrying shape for at least 3 years now

Problematic age and size structure, increasing risks for the stock

News of suboptimal spawning in spite of two recent saline water inflows

Highly uncertain scientific advice in spite of efforts at ICES level

The apparent fate of Western stock

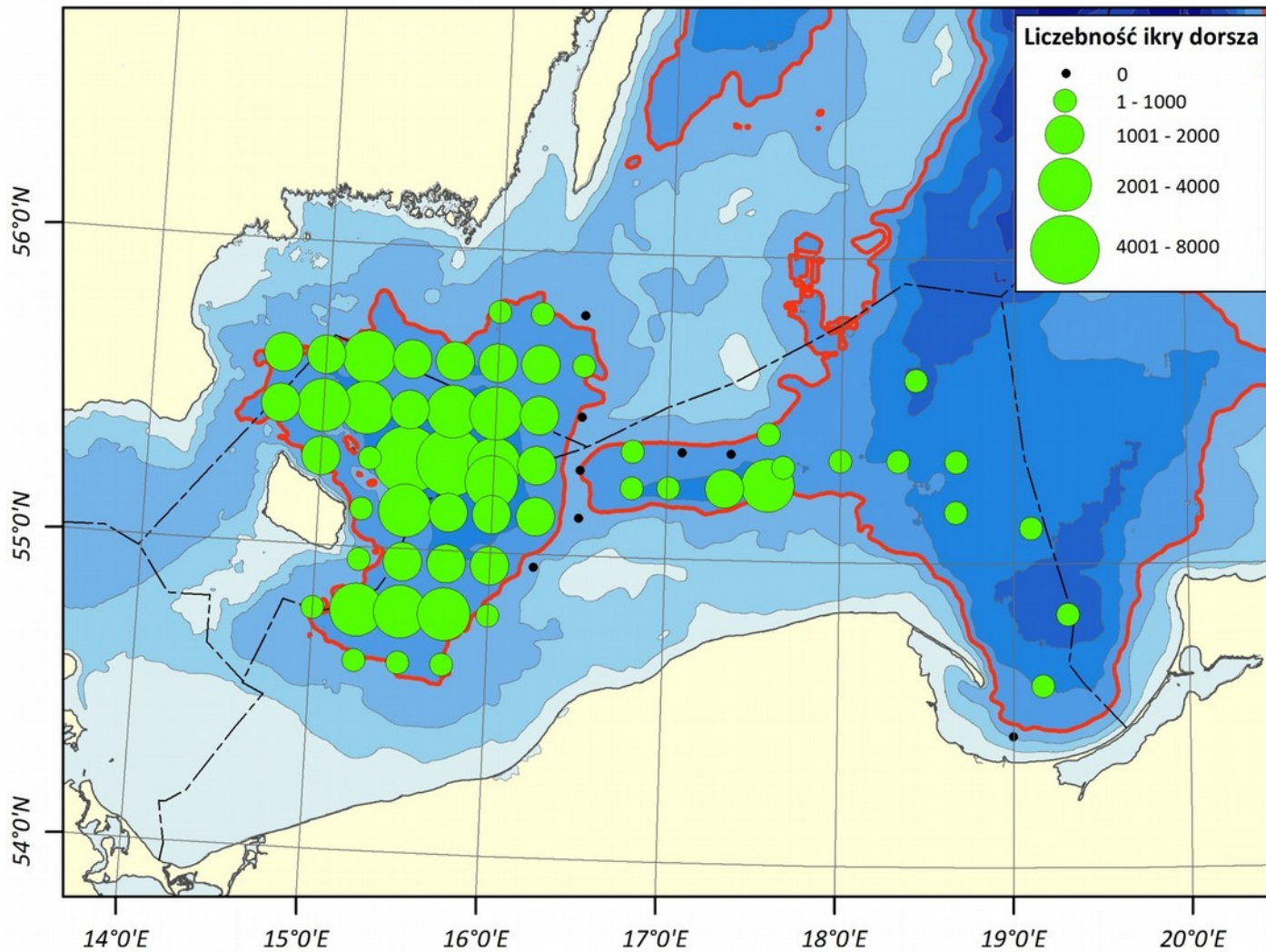
...because many fishermen are asking for it...



**Enhanced protection of
spawning stock is a MUST**

Update of Bornholm Deep closure coordinates (1/3)

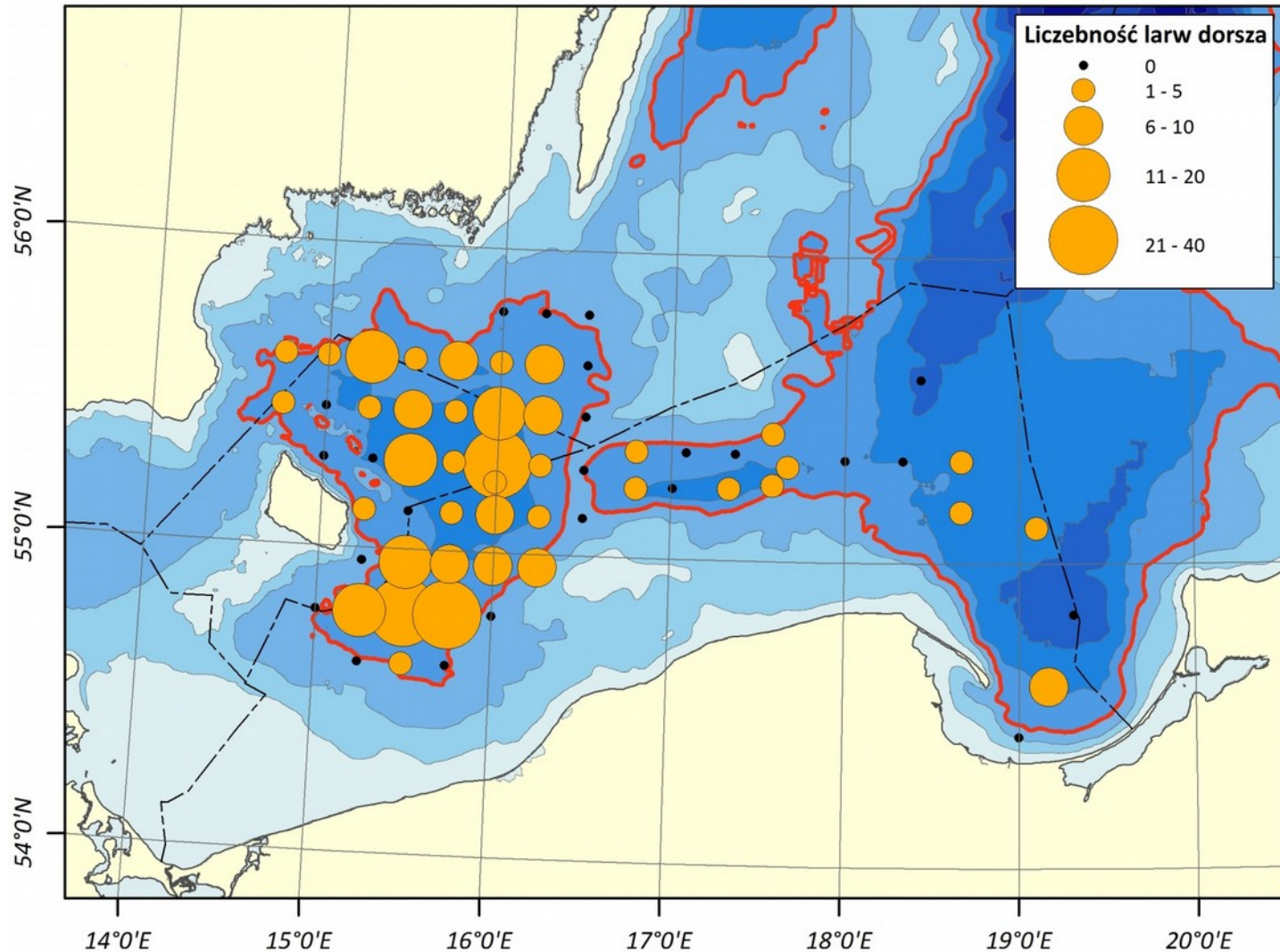
Number of cod eggs in 2015, n/1000 cubic meters



Source: Sea Fisheries Institute, Gdynia. Data from scientific cruise of r/v Baltica, spring 2015

Update of Bornholm Deep closure coordinates (2/3)

Number of cod larvae in 2015, n/1000 cubic meters



Source: Sea Fisheries Institute, Gdynia. Data from scientific cruise of r/v Baltica, spring 2015

Update of Bornholm Deep closure coordinates (3/3)

The 3-year dataset shows a similar trend, both for eggs and larvae

2013

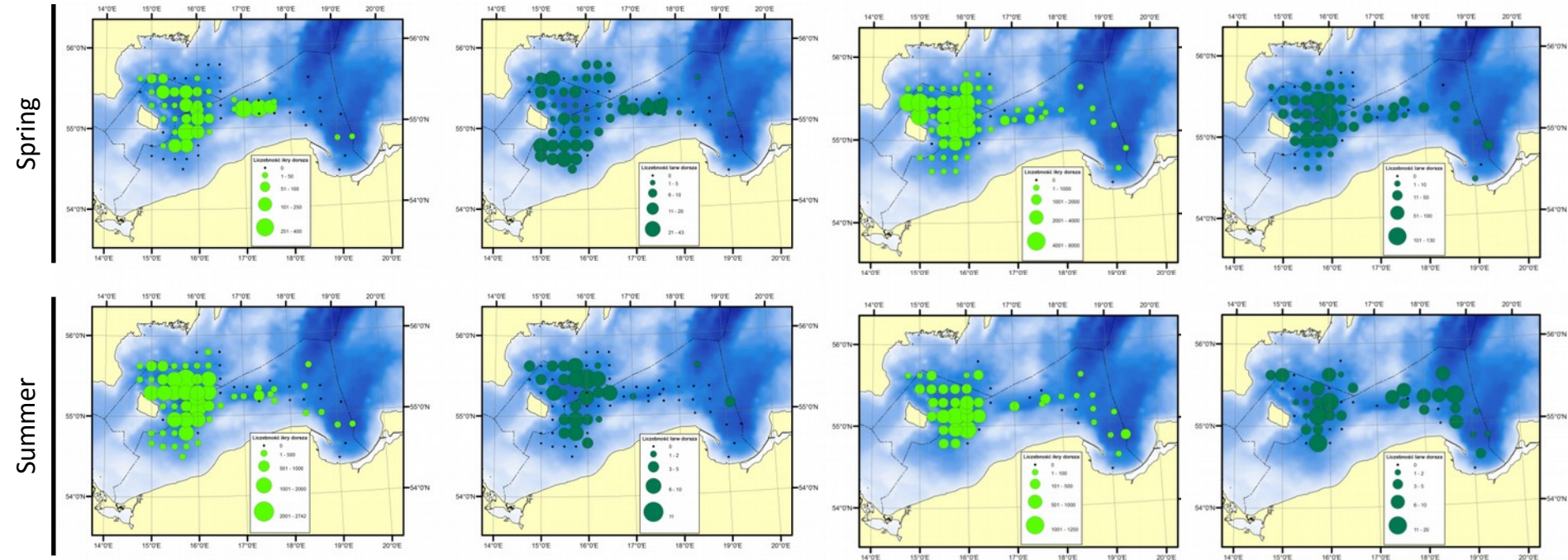
2014

Eggs

Larvae

Eggs

Larvae

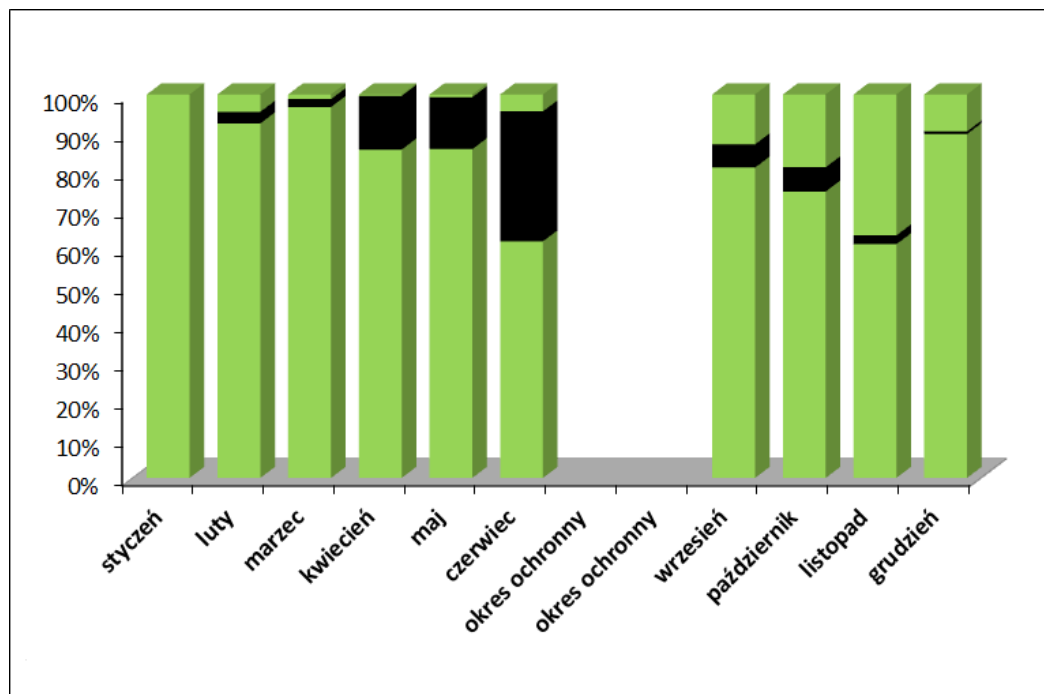


Source: Sea Fisheries Institute, Gdynia. Data from scientific cruises of r/v Baltica

There is enough evidence to extend the
Bornholm Deep closure to 60-meter isobath

Extension of the summer ban to 3 month by adding June

Spawning cod specimens in commercial catches of Polish fleet, 2015 (in black)



Source: Sea Fisheries Institute, Gdynia. Data from commercial fleet sampling

**34% of cod are spawning
already in June**

**THANK YOU FOR YOUR
ATTENTION**

