



Interreg VI A Lithuania-Poland Programme 2021-2027

Strategic Environmental Assessment Screening Document

Customer: Public Institution Joint Technical Secretariat

Vilnius, 2021

Tables of Content

Definitions and Abbreviations	3
List of Tables	4
List of Pictures	4
Introduction	5
1 Information of the Programme Preparation Organiser	7
1.1 Name and Contacts	7
1.2 Other information	7
2 Information about the Programme	8
2.1 Programme Title	8
2.2 Key Objectives of the Programme	8
2.3 Programme Correlation with Other Plans or Programmes	12
2.4 Description of Alternatives to the Plan or Programme	12
3 Information on the Place of Implementation of the Programme	13
3.1 Information on the Planned Alternative Places of the Programme Implementation	13
3.2 Information on Each Planned Place of the Programme Implementation	13
3.2.1 Protection Status of the Area	14
3.2.2 Are Protected Animal or Plant Species and/or Natural Habitats, Other Protected Natural or Cultural Heritage Values Found in the Area?	18
3.2.3 May the Implementation of the Plan or Programme Result in Exceeding of Environmental Quality Standards of the Area?	30
3.2.4 Is the Area Sensitive and (or) Valuable from an Environmental Point of View?	30
4 Information on the Significance of the Consequences of the Implementation of the Programme for the Environment	31
5 Other Information	35
5.1 Information on the Measures provided for to Prevent, Reduce or Compensate for the Negative Effects on the Environment	35
5.2 Information about Possible Public Dissatisfaction with the Plan or Programme	36
Annexes	37
Annex 1. Programme Intervention Logic	38
Annex 2. Protected Areas	39
Annex 3. Conclusions of SEA Entities, Consultations	43

Definitions and Abbreviations

Programme 2014–2020	Interreg V-A Lithuania-Poland Cooperation Programme
Regulation on Common Provisions	Regulation (EU) 2021/1060 of the European Parliament and of the Council of 24 June 2021 laying down common provisions on the European Countyal Development Fund, the European Social Fund Plus, the Cohesion Fund, the Just Transition Fund and the European Maritime, Fisheries and Aquaculture Fund and financial rules for those and for the Asylum, Migration and Integration Fund, the Internal Security Fund and the Instrument for Financial Support for Border Management and Visa Policy
SACs	Special Areas of Conservation
EC	European Commission
EU	European Union
ESF+	European Social Fund +
JTS	Public Institution Joint Technical Secretariat
Programme	Interreg VI A Lithuania-Poland Programme 2021-2027
SPAs	Special Protection Areas
EIA	Environmental Impact Assessment
PST	An area of global importance for birds
SEA	Strategic Environmental Assessment
GHG	Greenhouse gases

List of Tables

Table 1. Indicators referred to specific objective 1.1 and their values	8
Table 2. Indicators referred to specific objective 2.1 and their values	9
Table 3. Indicators referred to specific objective 2.2 and their values	10
Table 4. Indicators referred to specific objective 3.1 and their values	10
Table 5. Indicators referred to specific objective 3.2 and their values	11
Table 6. Protected areas in the Programme implementation area in Lithuania	16
Table 7. “Natura 2000” areas in the Programme implementation area in Lithuania	18
Table 8. “Natura 2000” areas in the Programme implementation area in Poland	29
Table 9. Significance of the Programme implementation consequences on the environment	32

List of Pictures

Fig. 1. Area of the Programme.....	14
Fig. 2. Protected and “Natura 2000” areas	15
Fig. 3. River Basin Districts in the Programme area	30

Introduction

Currently preparation of Interreg VI A Lithuania-Poland Programme 2021-2027 (hereinafter referred to as the Programme) is in progress.

In Lithuania - the Ministry of the Interior of the Republic of Lithuania is responsible for the preparation of the Programme and negotiations, and in Poland - the Ministry of Countyal Development of the Republic of Poland.

The objectives of the Programme and the activities to be financed do not establish the basis for the development of economic activities listed in Annexes 1 or 2 to the Law on Environmental Impact Assessment of the Proposed Economic Activities of the Republic of Lithuania. Pursuant to item 10.4 of the Description of the Procedure for the Strategic Environmental Assessment of Plans and Programmes, approved by the Resolution No. 967 of the Government of the Republic of Lithuania of 18 August 2004 "On the Approval of the Description of the Procedure for the Strategic Environmental Assessment of Plans and Programmes" (hereinafter referred to as SEA Description), and consultations with the responsible authority – Ministry of Environment of the Republic of Lithuania (**see Annex 3**), SEA screening procedures shall be carried out for the Programme:

"10.4. when another plan or programme is prepared, establishing the grounds for the development of economic activities, the implementation projects of which will have to be coordinated with the authority responsible for environmental protection in accordance with the procedure established by legal acts."

This SEI screening document is prepared in accordance with SEI Descriptions and in the scope defined in the Order No. D1-456 of the Minister of Environment of the Republic of Lithuania of 27 August 2004 "On the Approval of the Procedure on Screening for Strategic Environmental Assessment for the Plans and Programmes".

SEI screening procedures regulated by the SEI Description comply with the provisions of the Directive 2001/42/EC of the European Parliament and of the Council of 27 June 2001 on the assessment of the effects of certain plans and programmes on the environment.

SEI screening purpose is to decide whether a strategic environmental assessment of the Programme is required. The purpose of SEA screening is to determine whether the implementation of the Programme may have significant negative consequences for the environment and to ensure that environmental issues are considered at the earliest planning stage, providing measures to prevent and avoid negative consequences.

SEI screening document shall be submitted to the assessment stakeholders, which provide reasoned conclusions and/or reasons for which the strategic environmental impact assessment of the Programme should or should not be carried out. The organiser of the Programme preparation, based on the conclusions of the stakeholders, will decide whether a strategic environmental impact assessment of the Programme is mandatory. The assessment stakeholders and the public shall be informed about the adopted decision in accordance with the procedure established by laws.

Interreg VI A Lithuania-Poland Programme 2021-2027 is a programme of a national level, SEI assessment stakeholders:

- Ministry of Environment of the Republic of Lithuania (hereinafter referred to as the Ministry of Environment);
- Ministry of Health of the Republic of Lithuania (hereinafter referred to as the Ministry of Health);

- State Service for Protected Areas;
- Ministry of Culture of the Republic of Lithuania (hereinafter referred to as the Ministry of Culture).

The public shall participate in SEA process in accordance with the Description of the Procedure on Public Participation in the Procedures for the Strategic Assessment of the Effects of Plans and Programs on the Environment and Informing the Assessment Stakeholders and Member States of the European Union, approved by the order No. D1-455 of the Minister of the Environment of the Republic of Lithuania of 27 August 2004 "On the Approval of the Description of the Procedure on Public Participation in the Procedures for the Strategic Assessment of the Effects of Plans and Programs on the Environment and Informing the Assessment Stakeholders and Member States of the European Union".

1 Information of the Programme Preparation Organiser

1.1 Name and Contacts

Organiser of the Programme – Ministry of the Interior of the Republic of Lithuania (hereinafter referred to as the VRM).

Address: Šventaragio Str. 2, LT-01510 Vilnius, Lithuania

Contact person: Deimantė Jankūnaitė, Head of the Division of Territorial Cooperation Programmes of the EU Investments and International Programmes Department

tel.: +370 5 271 8966, e-mail: deimante.jankunaite@vrm.lt

1.2 Other information

Author of the document on Screening of Strategic Environmental Impact Assessment:

- Smart Continent LT, UAB
- Environmental Expert Rasa Alkauskaitė-Kokoškina.

Contact persons:

Gintarė Vitkauskaitė, tel. +370 696 54950, e-mail: gintare.vitkauskaite@smartcontinent.com

Contracting Authority for the service – Public Institution Joint Technical Secretariat (hereinafter referred to as JTS), established for administration of VRM Programme.

2 Information about the Programme

2.1 Programme Title

Interreg VI A Lithuania-Poland Programme 2021-2027.

Programmes for the European territorial cooperation purposes (INTERREG) help to eliminate obstacles for communication and cooperation seeking for common goals, help to solve common countyal problems, share experience and ideas.

More than 10 billion euros from the European Countyal Development Fund has been allocated to the implementation of all INTERREG V programmes in the countries of the European Union.

2.2 Key Objectives of the Programme

Interreg VI-A Lithuania-Poland Cross-Border Cooperation Programme 2021-2027 would include three priorities:

- Priority 1. Promoting environmental wellbeing.
- Priority 2. Promoting physical, emotional and cultural wellbeing.
- Priority 3. Strengthening cooperation of local stakeholders.

Below one can find the details of the Programme in terms of specific objectives, preliminary fund allocation proportions and the activities to be implemented. The total preliminary budget of the Programme is 45.7 million euros.

Priority 1. Promoting environmental wellbeing.

Specific objective 1.1. (vii) Enhancing protection and preservation of nature, biodiversity and green infrastructure, including in urban areas, and reducing all forms of pollution.

Preliminary gross contribution: 30 per cent of the budget (13.7 million euros)

Related types of action:

- Exchange of experience of policies applied in the fields of nature protection, preservation of biodiversity, reduction of pollution, development of green infrastructure;
- Joint actions and cooperation in environmental education and awareness raising;
- Protected areas adaptation for sustainable tourism and education;
- Maintenance and improvement of green public spaces in rural and urban areas;
- Joint actions to reduce water pollution (pesticides, heavy metals, other pollutants), including water pollution in river catchment areas;
- Joint development of pilot water and waste water solutions;
- Cooperation and joint actions identifying and strengthening functional links and/or areas in the scope of environment protection and nature preservation in the Programme area and its nearest vicinity, enhancing scope of positive environmental impact on the cross-border area.

Table 1. Indicators referred to specific objective 1.1 and their values

Indicators	Measurement unit	Milestone (2024)	Final target (2029)
------------	------------------	------------------	---------------------

Indicators	Measurement unit	Milestone (2024)	Final target (2029)
Output indicators			
Jointly developed solutions	Solution	2	10
Organisations cooperating across borders	Organisation	14	42
Indicators	Measurement unit	Baseline (2020)	Final target (2029)
Result indices			
Solutions taken up or up-scaled by organisations	Solution	0	8
Organisations cooperating across borders after project completion	Organisation	0	40

Priority 2. Promoting physical, emotional and cultural wellbeing

Specific objective 2.1. (vi) Ensuring equal access to health care and fostering resilience of health systems, including primary care, and promoting the transition from institutional to family-based and community-based care.

Preliminary gross contribution: 20 per cent of the budget (9,14 million euros)

Related types of action:

- Joint development or upgrade of health care services, long term care services, help lines, on-line services related to health, emergency services, joint trainings for medical, supporting staff and volunteers;
- Joint actions and cooperation encouraging active and healthy ageing;
- Development of mobile health care services;
- Joint actions and cooperation in the area of mental health.

Table 2. Indicators referred to specific objective 2.1 and their values

Indicators	Measurement unit	Milestone (2024)	Final target (2029)
Output indicators			
Capacity of new or modernised health care facilities	Persons / year	0	12186
Organisations cooperating across borders	Organisation	9	28
Jointly developed solutions	Solution	1	7
Indicators	Measurement unit	Baseline (2020)	Final target (2029)
Result indicators			
Annual users of new or modernised health care facilities	Users / year	0	1827
Organisations cooperating across borders after project completion	Organisations	0	27
Solutions taken up or up-scaled by organisations	Solutions	0	5

Priority 2. Promotion of physical, emotional and cultural well-being

Specific objective 2.2. (vi) Enhancing the role of culture and sustainable tourism in economic development, social inclusion and social innovation

Preliminary gross contribution: 30 per cent of the budget (13.7 million euros)

Related types of action:

- Development of joint marketing strategies and their implementation;

- Development of joint tourism and culture routes;
- Joint cultural events and activities, including search of partners on the other side of the border with matching activities;
- Development of joint tourism and culture products;
- Sustainable development of natural and cultural heritage, including intangible assets, for tourism and community needs (social, educational, cultural);
- Joint initiatives in the field of maintenance and revitalisation of sites of cultural and natural heritage;
- Cooperation and joint actions implementing the concepts of tourism cross-border functional area proposed in the EC study "Identification of key elements for creating the touristic cross-border functional area at the Lithuanian –Polish border".

Table 3. Indicators referred to specific objective 2.2 and their values

Indicators	Measurement unit	Milestone (2024)	Final target (2029)
Output indicators			
Number of cultural and tourism sites supported	Cultural and tourism sites	0	19
Organisations cooperating across borders	Organisation	14	42
Jointly developed solutions	Solution	2	10
Indicators	Measurement unit	Baseline (2020)	Final target (2029)
Result indicators			
Visitors of cultural and tourism sites supported	Visitors / year	215479 (2019)	247800
Organisations cooperating across borders after project completion	Organisation	0	40
Solutions taken up or up-scaled by organisations	Solution	0	8

Priority 3. Strengthening cooperation of local stakeholders

Specific objective 3.1. ISO (c) Build up mutual trust, in particular by encouraging people-to-people actions

Preliminary gross contribution: 10 per cent of the budget (4.57 million euros)

Related types of action:

- Delivery of initiatives (conferences, workshops etc.), aimed at strengthening the networking and cooperation capacity of local actors;
- Joint trainings and other types of capacity building;
- Joint events and cultural activities;
- Activities supporting citizen's involvement in decision making, political participation, enforcement of local communities' organisations, strengthening civic power of citizens and their civic engagement;
- Purchase of small-scale equipment and small scope investments necessary for cooperation project and sustainability activities;
- Promotion of sport and healthy lifestyle of cross-border communities.

Table 4. Indicators referred to specific objective 3.1 and their values

Indicators	Measurement unit	Milestone (2024)	Final target (2029)
------------	------------------	------------------	---------------------

Indicators	Measurement unit	Milestone (2024)	Final target (2029)
Product indices			
Participations in joint actions across borders	Participation	47	210
Public events across borders jointly organised	Event	6	31
Organisations cooperating across borders	Organisations	11	33
Indicators	Measurement unit	Baseline (2020)	Final target (2029)
Result indicators			
Participations in joint actions across borders after project completion	Participation	0	52
Organisations cooperating across borders after project completion	Organisations	0	31

Priority 3. Strengthening cooperation of local stakeholders

Specific objective 3.2. ISO (f) Other actions to support better cooperation governance

Preliminary gross contribution: 10 per cent of the budget (4.57 million euros)

Related types of action:

- Transfer of good practices and cooperation activities between local, county and national authorities and public service providers;
- Development and implementation of joint training programmes, online training and study programmes, cooperation and joint actions in the area of vocational training;
- Cooperation with employers and organisation of practical learning in private companies located on programme territory;
- Joint actions and cooperation in the area of firefighting and rescue services;
- Exchange of experience of policies applied in the fields of circular economy and energy efficiency;
- Share of best practices in the field of social integration and working with disadvantaged groups, joint development or upgrade of social services, including piloting and social innovation; joint trainings for social service providers and other specialists working with the target groups;
- Joint activities (events, workshops, etc.) for target groups;
- Purchase of small-scale equipment and investments necessary for cooperation project and sustainability of its results;
- Joint actions identifying and strengthening functional thematic relationships in the Programme area and its nearest vicinity, enhancing impact on the cross-border area.

Table 5. Indicators referred to specific objective 3.2 and their values

Indicators	Measurement unit	Milestone (2024)	Final target (2029)
Output indicators			
Participations in joint training schemes	Participation	70	315
Jointly developed solutions	Solution	1	7
Organisations cooperating across borders	Organisation	11	33
Indicators	Measurement unit	Baseline (2020)	Final target (2029)
Result indicators			
Completions of joint training schemes	Participants	0	283
Solutions taken up or up-scaled by organisations	Solution	0	5

Organisations cooperating across borders after project completion	Organisations	0	31
---	---------------	---	----

2.3 Programme Correlation with Other Plans or Programmes

The Programme responds to the most important strategic documents and policy goals of the EU, Lithuania and Poland. The Programme can also contribute to the implementation of the EU investment programme. The Programme can help to deal with common challenges in the countys and contribute to the promotion of local initiatives. The Programme is related to other Interreg programmes in the county, thus ensuring that international cooperation complies with the general objectives of the EU and promotes networking, and that the solutions developed can be extended beyond the Programme area. The Programme will contribute to the implementation of the Baltic Sea Strategy, in particular to the following policy objectives: “Increasing Well-Being”, “Tourism”, “Culture”, “Health”, “Education”, “Security”, “Bioeconomy”.

In Lithuania, the Programme will contribute to the implementation of the National Progress Plan 2021–2030, the National Progress Strategy “Lithuania 2030” and countyal strategies. The Strategy “Lithuania 2030” focuses on three areas: a smart society, a smart economy and smart governance. The Strategy “Lithuania 2030” aims to ensure a high quality of life and employment opportunities for all residents of the country, regardless of their place of residence. The National Progress Plan 2021-2030 includes 10 strategic goals and 3 horizontal principles: sustainable development, innovation (creativity) and equal opportunities for all. The strategic goal “Sustainable and balanced development of the area of Lithuania and reduction of countyal exclusion” aims to strengthen countyal economic growth by attracting investments that create quality jobs in the countys and promoting teleworking and mobile work, as well also provides the improvement of the public service infrastructure and the availability of high-quality public services to all residents of Lithuania.

The Programme will also contribute to the Polish Responsible Development Strategy until 2020 (with a perspective until 2030), the National Countyal Development Strategy 2030, other national documents and countyal strategies. The National Countyal Development Strategy 2030 has three main objectives:

- Increase the compatibility of social, economic, environmental and territorial development of the country;
- Increase countyal competitive advantages;
- Improve the management and implementation of the policy oriented to specific areas.

The Programme will make a significant contribution to the second and third objectives through the development of human capital, the strengthening of local government management capacity and the promotion of countyal cooperation.

The Responsible Development Strategy has 3 goals. The Programme should actively contribute to the goal “Socially Sensitive and Territorially Sustainable Development” by implementing the activities related to the promotion of social and economic activities in the countys.

2.4 Description of Alternatives to the Plan or Programme

European territorial cooperation is an instrument of cohesion policy. Interreg Lithuania-Poland Cross-Border Cooperation Project 2021–2027, which promotes intercountyal cooperation, has been prepared

by the European Countyal Development Fund to support cooperation actions, for which there are no alternatives.

3 Information on the Place of Implementation of the Programme

3.1 Information on the Planned Alternative Places of the Programme Implementation

No alternative places for the Programme implementation have been provided.

3.2 Information on Each Planned Place of the Programme Implementation

Interreg Lithuania-Poland Cross-Border Cooperation programme 2021-2027 refers to the programme of a national level. The eligible area of the Programme consists of 8 territorial units: 5 counties of south-western Lithuania and 3 sub-countys of north-eastern Poland.

The programme 2021-2027 covers the following areas in the Republic of Lithuania and the Republic of Poland:

- Marijampolė county (Lithuania);
- Alytus county (Lithuania);
- Tauragė county (Lithuania);
- Kaunas county (Lithuania);
- Vilnius county ¹; (Lithuania);
- Białostocki subcounty (Poland);
- Ełcki subcounty (Poland);
- Ełcki subcounty (Poland).

This Strategic Environmental Assessment Screening Document is intended for the place of the Programme implementation in the Republic of Lithuania.

In accordance with Regulation (EC) No 1059/2003 of the European Parliament and of the Council of 26 May 2003 on the establishment of a common classification of territorial units for statistics (NUTS) (as last amended) the countys referred to the Programme shall be classified as NUTS level 3.

¹ Except for Vilnius city



Fig. 1. Area of the Programme

3.2.1 Protection Status of the Area

Currently, the system of specially protected areas in Lithuania occupies over 1151 thousand ha, i.e. about 17.63% of the area of the country, of which 38.8% are county parks, 22.1% biosphere reserves, national parks and state reserves occupy 12.5% each.

The European ecological network Natura 2000 is a common network of protected areas of European Community importance, consisting of areas included in the lists of areas approved by the Government for the protection of habitats and birds, as well as the areas included in the list of areas meeting the criteria for the selection of areas of importance for the protection of habitats approved by the Government and intended for the conservation, maintenance and, where necessary, restoration of natural habitat types and animal and plant species in their natural range.

Currently, "Natura 2000" areas in Lithuania make up 11.2% of the protected areas in the Republic of Lithuania:

- 84 areas important for the protection of birds under the EU Birds Directive (SPAs);
- 475 areas important for the protection of habitats under the EU Habitats Directive (SACs).

According to the State Service for Protected Areas, the main problems of the Lithuanian system of protected areas are the lack of spatial planning documents, insufficient financing of activities in protected areas, regulation of land privatization process, insufficient regime of protection and use of protected areas, insufficient formation of recreational infrastructure in national and county parks, the absence of a system of incomplete formation of cultural protected areas, primarily a system of historic national parks.

There are a total of 3,050 protected areas in Poland, of which 999 refer to “Natura 2000” areas - 145 Special Protection Areas (SPAs) and 81 Areas of Community Importance (SACs) - as well as 2,051 national protected areas. State protected areas make up 84% of the total area of protected areas².

The Programme area includes national and county parks, state reserves, state historical-cultural reserves and “Natura 2000” areas. The total area of protected areas included in the geographical area of the Programme is about 2 284 903 ha. The Polish border county is particularly rich in protected areas and is often referred to as the “Green Lungs of Europe”. This functional area is located in the north-eastern part of the country and covers an area of 63 234 km², representing 20.2% of the area of Poland.

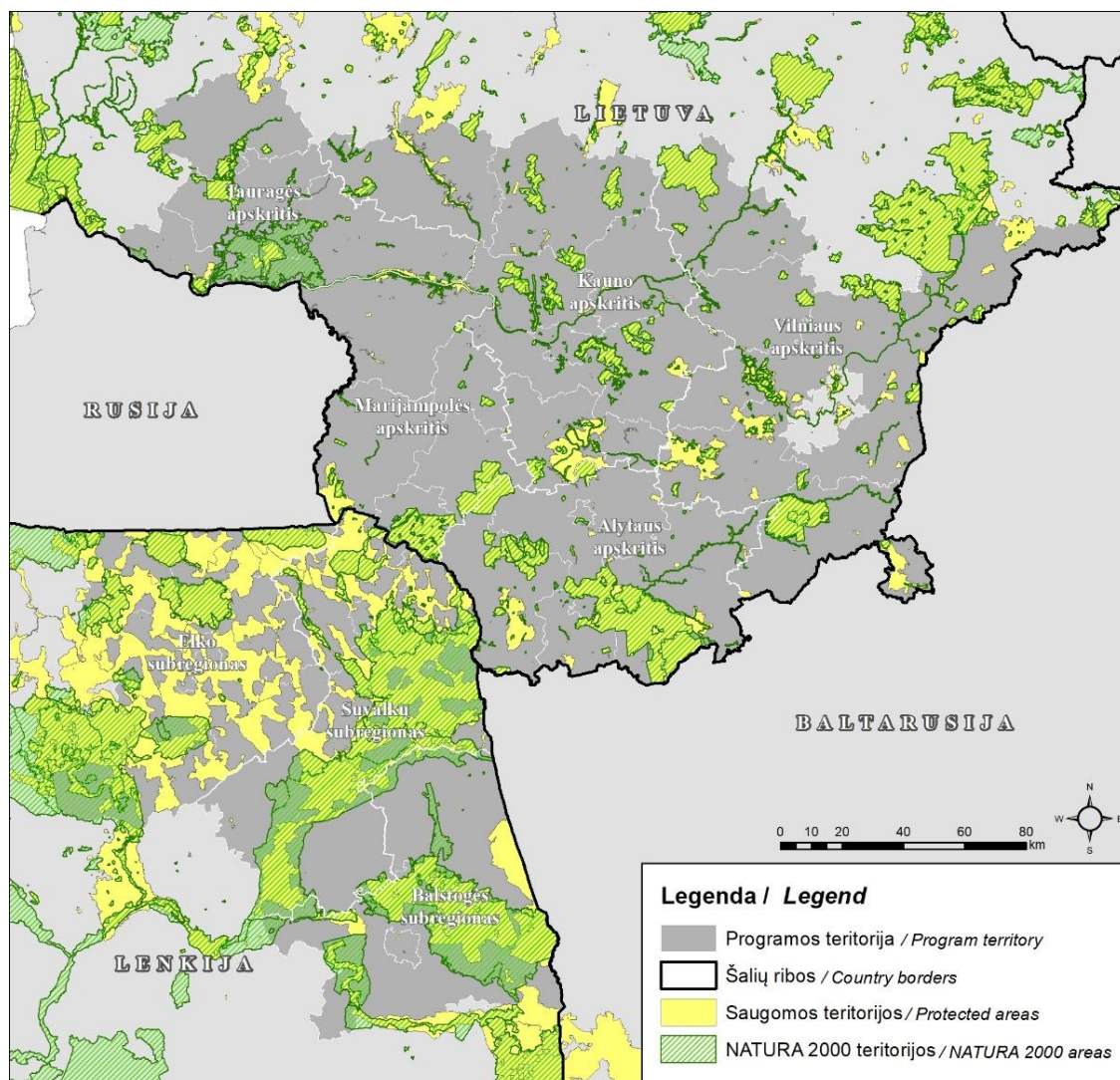


Fig. 2. Protected and “Natura 2000” areas

² <https://biodiversity.europa.eu/>

The landscape features of the border county are quite similar - large wooded plots with many rivers and lakes. The highest forest cover was in Alytus and Vilnius Countys (49 and 44% of the total area, respectively), and the lowest in Marijampolė County (about 22%). In the remaining countys, the share of wooded land was similar to the national average.

The level of forest cover in the Suwalki Sub-County was similar to the national average and accounted for almost 30 per cent of the area. Meanwhile, in the Białystok and Elcki Sub-Countys, the share of forest land exceeded the national average and accounted for 33% and 32% of the total area, respectively.

In the tables below (Table 1 and Table 2) and in **Annex 2**, the protected areas located in the Programme areas in Lithuania are distinguished according to the protection regime:

- National parks;
- Countyal parks;
- Reserves;
- “Natura 2000” areas (areas important for the protection of habitats and birds).

Annex 2 presents the protected areas of the Programme in the territory of Lithuania and Poland.

Table 6. Protected areas in the Programme implementation area in Lithuania

Area name	Area, ha	International importance of the protected area or part of it / purpose of establishment
National parks		
Dzūkija national Park	58334.399	To preserve especially valuable natural and cultural complexes of Dainava county - the hydrographic network of the Nemunas-Merkis-Ūla-Grūda-Skroblaus confluence river and valleys with characteristic complexes of flora and its migration routes; Dzūkija continental dune arrays
Trakai Historic National Park	8146.66 (680.628)	To preserve the historical archeological complexes of the castles of Trakai Island and the peninsula, the Old Trakai Castle Site and the ancient settlement, the planned spatial structure of the Old Town of Trakai
Aukštaitija National Park	40974.765 (10025.734)	To preserve the eastern part of the Aukštaičiai Uplands with the relief complexes and the terraced plains extending along them, the hydrographic complex of the Upper Žeimena, unique plant and animal communities and rare species; older settlements
Countyal parks		
Asveja Countyal Park	12206.938 (1859.694)	To preserve the landscape of Lake Asveja, its natural ecosystem and cultural heritage values
Neris Countyal Park	10514.609	To preserve the middle Neris, its natural ecosystem and cultural heritage values
Verkiai Countyal Park	2529.056 (86.176)	To preserve the landscape of the Green Lakes and the valuable cultural and historical complexes of Verkiai, Kalvarijai and Trinapolis Districts
Aukštadvaris Countyal Park	17004.902	To preserve the landscape of the Verknė and Strėva upstream area in the vicinity of Aukštadvaris, its natural ecosystem and cultural heritage values
Meteliai Countyal Park	17720.686	To preserve the landscape of the Great Lakes of Southern Lithuania and their surroundings, its natural ecosystem and cultural heritage values
Nemunas Loops Countyal Park	25079.763	To preserve the unique landscape of the Great Nemunas Loops and Punios šilo, its natural ecosystem and cultural heritage values
Veisiejai Countyal Park	12288.353	To preserve the wooded landscape of Veisiejai Lake District, its natural ecosystem and cultural heritage values
Dubysa Countyal Park	11469.318 (10160.614)	To preserve the most expressive landscape of the Dubysa Erosive Valley in Lithuania, its natural ecosystem and cultural heritage values
Kauno Marios Countyal Park	9851.889	To preserve the unique landscape of the lower part of Kauno Marios water body, its natural ecosystem and cultural heritage values
Krekenava Countyal Park	11589.642 (294.989)	To preserve the landscape of the Nevėžis middle valley, its natural ecosystem and cultural heritage values
Panemunės Countyal Park	10162.98	To preserve the Lower Nemunas landscape, its natural ecosystem and cultural heritage values
Tytuvėnai Countyal Park	18063.739	To preserve the landscape of Tytuvėnai - Šiluva urban architectural complexes

	(2068.919)	and their lake marshy surroundings, its natural ecosystem and cultural heritage values
Vištytis Countyal Park	10428.569 (10425.024)	To preserve the landscape of Sūduva hill, its natural ecosystem and cultural heritage values
Pagramantis Countyal Park	13468.125	To preserve the landscape of Akmena - Jūra confluence valleys and forests, its natural ecosystem and cultural heritage values
Rambynas Countyal Park	4788.275 (4745.238)	To preserve the unique landscape of the Lower Nemunas, its natural ecosystem and cultural heritage values
Varniai Countyal Park	33731.741 (6518.92)	To preserve the landscape of the Samogitian central lake hill, its natural ecosystem and cultural heritage values
Dieveniškiai Histroci Countyal Park	8598.024	To preserve the natural and cultural monuments of the Dieveniškės area, the valuable ethnocultural heritage
Labanoras Countyal Park	55320.194 (32026.21)	To preserve the landscape of Labanoras forest and its lakes, its natural ecosystem and cultural heritage values
Sirvėta Countyal Park	8754.659 (6976.018)	To preserve the landscape of the moraine watershed of Švenčionys County, its natural ecosystem and cultural heritage values
Reserves		
Dūkštas Nature Reserve	35.833	
Kernavė State Cultural Reserve	194.43	
Liubelis Nature Reserve	53.268	
Liūnelis nature Reserve	34.061	
Musteika Nature Reserve	216.908	
Obelytė Nature Reserve	60.79	
Povilnio gamtinis rezervatas	183.222	
Punios Šila Nature Reserve	456.946	
Skaistis Nature Reserve	18.443	
Skroblas Nature Reserve	1597.866	
Trakas Nature Reserve	49.667	
Čepkėliai State Nature Reserve	11266.632	
Žuvintas Nature Reserve	6062.583	
Buktbalė Nature Reserve	97.359	
Drausgiris Nature Reserve	205.108	
Grybingiris Nature Reserve	372.073	
Liūliškyne Nature Reserve	41.654	
Velniaravis Nature Reserve	71.324	
Viešvilė State Nature Reserve	3218.919	
Girutiškis Nature Reserve	1402.387	
Kiauneliškis Nature Reserve	282.856	
Mergiškiai Nature Reserve	156.376	
Old Trakai Castle Cultural Reserve	16.332	
Trakai Islands and Peninsula Cultural Reserve	26.022	

3.2.2 Are Protected Animal or Plant Species and/or Natural Habitats, Other Protected Natural or Cultural Heritage Values Found in the Area?

The Programme area is characterized by biodiversity and protected areas. 331 areas important for the protection of “Natura 2000” habitats and 58 areas important for the protection of birds are found in the territory of Lithuania (fig. 2). In the territory of Poland - 28 areas important for the protection of Natura 2000 habitats and 14 sites for the protection of birds, 4 Ramsar³ areas of international importance. Čepkeliai Reserve, Viešvilė Reserve, Žuvintas Reserve are included in the list of Ramsar areas referred to the Programme area in Lithuania.

Below one can find tables with “Natura 2000” areas in Lithuania and Poland.

Table 7. “Natura 2000” areas in the Programme implementation area in Lithuania ⁴

Area	Types of protected area	Area type	Name	Area in the area, ha
Alytus County	Natura 2000	SACs	The northern border of Ančia Lake	16.355
Alytus County	Natura 2000	SACs	Avirė River	54.459
Alytus County	Natura 2000	SACs	Avižieniai forest	14.708
Alytus County	Natura 2000	SACs	Balsys Lake	43.881
Alytus County	Natura 2000	SACs	White Ančia surroundings	165.731
Alytus County	Natura 2000	SACs	Bestraigiškiai Village surroundings	62.163
Alytus County	Natura 2000	SACs	Bilsinyčia river surroundings	14.596
Alytus County	Natura 2000	SACs	Burokaraistis Lake	39.152
Alytus County	Natura 2000	SACs	Cimokinė	366.712
Alytus County	Natura 2000	SACs	Dainaviškės wetlands	57.467
Alytus County	Natura 2000	SACs	Dainava forest	54825.674
Alytus County	Natura 2000	SACs	Derežna River	137.255
Alytus County	Natura 2000	SACs	Diržamenys swamp	74.784
Alytus County	Natura 2000	SACs	Drupaliai Village surroundings	3.613
Alytus County	Natura 2000	SACs	Geidukonys swamp	68.294
Alytus County	Natura 2000	SACs	Glėbas Lake surroundings	685.557
Alytus County	Natura 2000	SACs	Grynaraistis	15.394
Alytus County	Natura 2000	SACs	Ilgininkai surroundings	367.931
Alytus County	Natura 2000	SACs	Ilgininkao forest part	85.541
Alytus County	Natura 2000	SACs	Ilgys Lake (I)	66.193
Alytus County	Natura 2000	SACs	Kauknoris surroundings	218.652
Alytus County	Natura 2000	SACs	Krakinis swamp	157.142
Alytus County	Natura 2000	SACs	Kučiuiliškė Village surroundings	146.42
Alytus County	Natura 2000	SACs	Liubelis forest	146.027
Alytus County	Natura 2000	SACs	Liūnelis Lake and its surroundings	45.492
Alytus County	Natura 2000	SACs	Margai Village surroundings	10.979
Alytus County	Natura 2000	SACs	Confluence of Merkys and Šalčia rivers	69.585
Alytus County	Natura 2000	SACs	Merkys River	1321.648

³ Convention on Wetlands of International Importance especially as Waterfowl Habitat

⁴ State Cadastre of Protected Areas of the Republic of Lithuania <https://stk.am.lt/portal/>

Area	Types of protected area	Area type	Name	Area in the area, ha
Alytus County	Natura 2000	SACs	Meteliai Countyal Park	17004.787
Alytus County	Natura 2000	SACs	Meadows in the valley of Morkavas River	7.134
Alytus County	Natura 2000	SACs	Nedzingis Lake	278.688
Alytus County	Natura 2000	SACs	Nedzingė and Amarnia Rivers	21.305
Alytus County	Natura 2000	SACs	Nemunas Loops	221.073
Alytus County	Natura 2000	SACs	Norūnai forest	243.106
Alytus County	Natura 2000	SACs	Paveisiejai Village surroundings	11.559
Alytus County	Natura 2000	SACs	Pertakas surroundings	613.553
Alytus County	Natura 2000	SACs	Petroškai forest	739.163
Alytus County	Natura 2000	SACs	Punios šilas	2692.08
Alytus County	Natura 2000	SACs	Radyšcius Village surroundings	11.039
Alytus County	Natura 2000	SACs	Raigardas surroundings	203.139
Alytus County	Natura 2000	SACs	Sabališkiai forest	129.972
Alytus County	Natura 2000	SACs	Snaigynas Lake	205.973
Alytus County	Natura 2000	SACs	Spengla River and its valley	254.03
Alytus County	Natura 2000	SACs	Stankūnai Village surroundings	63.97
Alytus County	Natura 2000	SACs	Stojai meadows	192.94
Alytus County	Natura 2000	SACs	Stračiūnai Village surroundings	49.647
Alytus County	Natura 2000	SACs	Tabalis swamp	86.918
Alytus County	Natura 2000	SACs	Taukotiškiai meadows	18.159
Alytus County	Natura 2000	SACs	Varnėnai surroundings	4.924
Alytus County	Natura 2000	SACs	Varčios surroundings	96.511
Alytus County	Natura 2000	SACs	Verknė Middle River	5.395
Alytus County	Natura 2000	SACs	Versekos River	216.025
Alytus County	Natura 2000	SACs	Versekos Rivers valley ties Krūminiai	49.761
Alytus County	Natura 2000	SACs	Vidzgirio forest	382.517
Alytus County	Natura 2000	SACs	Vilkas Lake and its surroundings	120.13
Alytus County	Natura 2000	SACs	Čepkeliai swamp	12738.74
Alytus County	Natura 2000	SACs	Šlavantėlė River valley	4.355
Alytus County	Natura 2000	SACs	Šlavantai Village surroundings	7.951
Alytus County	Natura 2000	SACs	Ūla River	434.255
Alytus County	Natura 2000	SACs	Žuvintas Lake and Bukta forest	8135.538
Alytus County	Natura 2000	SPAs	Dainava forest	55432.874
Alytus County	Natura 2000	SPAs	Grybaulia fishing ponds	742.008
Alytus County	Natura 2000	SPAs	Kalvarija surroundings	2.12
Alytus County	Natura 2000	SPAs	Karaviškiai forest	343.083
Alytus County	Natura 2000	SPAs	Meteliai, Dusia and Obelija Lakes	4479.511
Alytus County	Natura 2000	SPAs	Nemunas between Pelėšiškiai and Balbieriškis	133.844
Alytus County	Natura 2000	SPAs	Niedus and Veisiejai Lakes	118.622
Alytus County	Natura 2000	SPAs	Pertakas forest	1126.74

Area	Types of protected area	Area type	Name	Area in the area, ha
Alytus County	Natura 2000	SPAs	Rūdinkai forest	992.965
Alytus County	Natura 2000	SPAs	Čepkeliai swamp	11214.77
Alytus County	Natura 2000	SPAs	Žuvintas, Žaltytis and Amalvas swamps	8140.394
Kaunas County	Natura 2000	SACs	Aluona River and valleys	193.729
Kaunas County	Natura 2000	SACs	Alšis River surroundings	208.92
Kaunas County	Natura 2000	SACs	Aukštieji Šančiai Oak Woods	41.742
Kaunas County	Natura 2000	SACs	Babtai-Varluva forests	3129.209
Kaunas County	Natura 2000	SACs	Bakainiai	41.593
Kaunas County	Natura 2000	SACs	Balbieriškis rock exposure	8.004
Kaunas County	Natura 2000	SACs	Balbieriškis forest	528.744
Kaunas County	Natura 2000	SACs	Balbieriškis forest II	1947.718
Kaunas County	Natura 2000	SACs	Balčia River	451.17
Kaunas County	Natura 2000	SACs	BarRiver valleys	30.879
Kaunas County	Natura 2000	SACs	Būda and Pravieniškės forests	4156.058
Kaunas County	Natura 2000	SACs	Didelis forest	9.576
Kaunas County	Natura 2000	SACs	Dubrava Ancient Woods	124.784
Kaunas County	Natura 2000	SACs	Dubysa Middle River and Lower River	2061.244
Kaunas County	Natura 2000	SACs	Dvariškiai Village surroundings	495.837
Kaunas County	Natura 2000	SACs	Gaižiūnai	529.928
Kaunas County	Natura 2000	SACs	Gelnai forest	234.13
Kaunas County	Natura 2000	SACs	Glaušiai Village surroundings	193.075
Kaunas County	Natura 2000	SACs	Ilgatrakis forest	185.983
Kaunas County	Natura 2000	SACs	Jiesia River and its valleys	447.561
Kaunas County	Natura 2000	SACs	Josvainiai forest	24.944
Kaunas County	Natura 2000	SACs	Julijanava fort	5.4
Kaunas County	Natura 2000	SACs	Jūkainiai forest	266.555
Kaunas County	Natura 2000	SACs	Kalnaberžė forest	74.883
Kaunas County	Natura 2000	SACs	Kamša forest	321.172
Kaunas County	Natura 2000	SACs	Kamša forest II	28.711
Kaunas County	Natura 2000	SACs	Karklė-Nerėpa surroundings	106.833
Kaunas County	Natura 2000	SACs	Kaukinė forest	1126.961
Kaunas County	Natura 2000	SACs	Kauno marios	9020.608
Kaunas County	Natura 2000	SACs	Kaunas Oak Woods	60.828
Kaunas County	Natura 2000	SACs	Kačerginė surroundings	30.529
Kaunas County	Natura 2000	SACs	Klamputė	11.93
Kaunas County	Natura 2000	SACs	Kruonis Gojus forest	3.96
Kaunas County	Natura 2000	SACs	Kulva surroundings	377.913
Kaunas County	Natura 2000	SACs	Labūnava forest	400.779
Kaunas County	Natura 2000	SACs	Lapainia valley	221.25
Kaunas County	Natura 2000	SACs	Liekė surroundings	28.462
Kaunas County	Natura 2000	SACs	Lomena and Verkstinė	542.946
Kaunas County	Natura 2000	SACs	Mergiškės forest	0
Kaunas County	Natura 2000	SACs	Milikoniai fort	2.686

Area	Types of protected area	Area type	Name	Area in the area, ha
Kaunas County	Natura 2000	SACs	Naujoji Freda fort	5.834
Kaunas County	Natura 2000	SACs	Nemunas Loops	1124.687
Kaunas County	Natura 2000	SACs	Nemunas River in Panemuniai Countyal Park	55.979
Kaunas County	Natura 2000	SACs	Neiris River	1078.931
Kaunas County	Natura 2000	SACs	Nevėžis Rivers valley beside Šventybrastis	9.312
Kaunas County	Natura 2000	SACs	Nevėžis Lower River	1173.619
Kaunas County	Natura 2000	SACs	Nevėžis Lower River II	255.335
Kaunas County	Natura 2000	SACs	Novaraistis forests	366.511
Kaunas County	Natura 2000	SACs	Ošvenčia River and its valleys	431.591
Kaunas County	Natura 2000	SACs	Padauguva forest	734.912
Kaunas County	Natura 2000	SACs	Pakarklė forest	239.369
Kaunas County	Natura 2000	SACs	Palraistis	345.015
Kaunas County	Natura 2000	SACs	Pažzuolynė peat bog	75.797
Kaunas County	Natura 2000	SACs	Praviršulis tyrelis	48.795
Kaunas County	Natura 2000	SACs	Prienai šilas	468.698
Kaunas County	Natura 2000	SACs	Revuona headwaters	23.447
Kaunas County	Natura 2000	SACs	Ringovė forests	208.528
Kaunas County	Natura 2000	SACs	Rokai fort	7.998
Kaunas County	Natura 2000	SACs	Romainiai Oak Woods	35.509
Kaunas County	Natura 2000	SACs	Runeikiai forest	56.835
Kaunas County	Natura 2000	SACs	Rūdgirė swamp	25.772
Kaunas County	Natura 2000	SACs	Siponiai rock exposure	3.015
Kaunas County	Natura 2000	SACs	Skaistė swamp	104.548
Kaunas County	Natura 2000	SACs	Skriaudžiai Village surroundings	197.274
Kaunas County	Natura 2000	SACs	Strošiūnai šilas	224.866
Kaunas County	Natura 2000	SACs	Strėvininkai forest	194.22
Kaunas County	Natura 2000	SACs	Tartokas swamp	32.606
Kaunas County	Natura 2000	SACs	Vaiguva forest	665.342
Kaunas County	Natura 2000	SACs	Varnabūdė forest	1.393
Kaunas County	Natura 2000	SACs	Verknė Rivers valley	589.983
Kaunas County	Natura 2000	SACs	Verknė Middle River	523.772
Kaunas County	Natura 2000	SACs	Vikšrupis High River	108.034
Kaunas County	Natura 2000	SACs	Vizdija Rivers valley	199.238
Kaunas County	Natura 2000	SACs	Vosbučiai Village surroundings	153.724
Kaunas County	Natura 2000	SACs	Šešuvė Rivers valley below Molavėnai	355.541
Kaunas County	Natura 2000	SACs	Šienlaukis forest	50.798
Kaunas County	Natura 2000	SACs	Šilas forest	195.393
Kaunas County	Natura 2000	SACs	Šiluva tyrelis	1.298
Kaunas County	Natura 2000	SACs	Širvinta River and its valleys	356.607
Kaunas County	Natura 2000	SACs	Škėvonys rock exposure	1.175
Kaunas County	Natura 2000	SACs	Šušvė River and its surroundings	179.976

Area	Types of protected area	Area type	Name	Area in the area, ha
Kaunas County	Natura 2000	SACs	Šventoji Rivers valley beside Upninkai	105.527
Kaunas County	Natura 2000	SACs	Šventoji Rivers Middle River	274.599
Kaunas County	Natura 2000	SACs	Žagariškiai fort	6.319
Kaunas County	Natura 2000	SPAs	Babtai-Varluva forests	4418.766
Kaunas County	Natura 2000	SPAs	Balbieriškis forest	3059.442
Kaunas County	Natura 2000	SPAs	Blinstrubiškis forest	3234.657
Kaunas County	Natura 2000	SPAs	Būda-Pravieniškės forests	5173.192
Kaunas County	Natura 2000	SPAs	Dotnuva-Josvainiai forests	5781.857
Kaunas County	Natura 2000	SPAs	Dubysa Rivers valley	1009.037
Kaunas County	Natura 2000	SPAs	Kauno marios	8294.304
Kaunas County	Natura 2000	SPAs	Labūnava forest	3978.01
Kaunas County	Natura 2000	SPAs	Lančiūnava forest	5221.869
Kaunas County	Natura 2000	SPAs	Nemunas between Pelėšiškės and Balbieriškis	270.319
Kaunas County	Natura 2000	SPAs	Nemunas between Prienai and Lengveniškės	142.471
Kaunas County	Natura 2000	SPAs	The banks of the Nemunas River and the islands between Kulautuva and Smalininkai	886.715
Kaunas County	Natura 2000	SPAs	Nevėžis Rivers valley	1153.6
Kaunas County	Natura 2000	SPAs	Novaraistis	366.511
Kaunas County	Natura 2000	SPAs	Padauguva forest	5782.595
Kaunas County	Natura 2000	SPAs	Praviršulis tyrelis	49.201
Marijampolė County	Natura 2000	SACs	Balbieriškis forest II	0.512
Marijampolė County	Natura 2000	SACs	Dalginė forest	150.838
Marijampolė County	Natura 2000	SACs	Grandai	185.52
Marijampolė County	Natura 2000	SACs	Kazlų Rūda forest II	1288.333
Marijampolė County	Natura 2000	SACs	Kazlų Rūda forest III	134.398
Marijampolė County	Natura 2000	SACs	Kazlų Rūda forest	359.194
Marijampolė County	Natura 2000	SACs	Liekė surroundings	44.959
Marijampolė County	Natura 2000	SACs	Liubavas Village surroundings	153.167
Marijampolė County	Natura 2000	SACs	The ridges of the Nemunas Valley from Kriukai to Gelgaudiškis	1363.139
Marijampolė County	Natura 2000	SACs	Nemunas valley beside Palėkiai	175.8
Marijampolė County	Natura 2000	SACs	Nemunas River in Panemuniai Countyal Park	518.121
Marijampolė County	Natura 2000	SACs	Novaraistis forests	460.289
Marijampolė County	Natura 2000	SACs	Pavištytis meadows	22.754
Marijampolė County	Natura 2000	SACs	Peleniai Village surroundings	46.595
Marijampolė County	Natura 2000	SACs	Skriaudžiai Village surroundings	0.239
Marijampolė County	Natura 2000	SACs	Tadarinė and Vištytgiris forests	1173.719
Marijampolė County	Natura 2000	SACs	Trakėnai forest	97.379
Marijampolė County	Natura 2000	SACs	Varnabūdė forest	110.9
Marijampolė County	Natura 2000	SACs	Virbalgiris forest	367.89
Marijampolė County	Natura 2000	SACs	Višakis River valley	111.893

Area	Types of protected area	Area type	Name	Area in the area, ha
Marijampolė County	Natura 2000	SACs	Vištytis Countyal Park	4393.968
Marijampolė County	Natura 2000	SACs	Vygris and Beržinis	44.37
Marijampolė County	Natura 2000	SACs	ŠešRiver and its valleys	255.794
Marijampolė County	Natura 2000	SACs	Širvinta (Šeimenai) Middle River	18.434
Marijampolė County	Natura 2000	SACs	Širvinta (Šeimenai) Lower River	122.921
Marijampolė County	Natura 2000	SACs	Žuvintas Lake and Bukta forest	7732.229
Marijampolė County	Natura 2000	SPAs	Balbieriškis forest	1.172
Marijampolė County	Natura 2000	SPAs	Kalvarija surroundings	19748.737
Marijampolė County	Natura 2000	SPAs	Nemunas valley meadows between Raudonė and Gelgaudiškis	497.893
Marijampolė County	Natura 2000	SPAs	The banks of the Nemunas River and the islands between Kulautuva and Smalininkai	1609.368
Marijampolė County	Natura 2000	SPAs	Novaraistis	460.289
Marijampolė County	Natura 2000	SPAs	Širvinta Rivers valley	495.265
Marijampolė County	Natura 2000	SPAs	Žuvintas, Žaltytis and Amalvas swamps	10349.292
Tauragė County	Natura 2000	SACs	Aitra River	47.542
Tauragė County	Natura 2000	SACs	Ančia Rivers valley	338.133
Tauragė County	Natura 2000	SACs	Armena rock exposures	218.152
Tauragė County	Natura 2000	SACs	Balandinė swamp	168.506
Tauragė County	Natura 2000	SACs	Baužaičiai swamp	258.68
Tauragė County	Natura 2000	SACs	Dabrupinė forest	114.536
Tauragė County	Natura 2000	SACs	Dubysa Middle River and Lower River	235.851
Tauragė County	Natura 2000	SACs	Gojus ridges	12.094
Tauragė County	Natura 2000	SACs	Gystus Rivers valley	191.169
Tauragė County	Natura 2000	SACs	Jūra River below Tauragė	606.745
Tauragė County	Natura 2000	SACs	Jūra Rivers valleys	16.943
Tauragė County	Natura 2000	SACs	Karšuva Wood	37193.662
Tauragė County	Natura 2000	SACs	Klangiai meadows	32.094
Tauragė County	Natura 2000	SACs	Lapgiriai forest	146.889
Tauragė County	Natura 2000	SACs	Laukesa I	1187.11
Tauragė County	Natura 2000	SACs	Margupis kadagynas	25.251
Tauragė County	Natura 2000	SACs	Medvėgalis meadows	44.953
Tauragė County	Natura 2000	SACs	Meškai meadows	147.689
Tauragė County	Natura 2000	SACs	Mituva Rivers valley below Pauliai	155.847
Tauragė County	Natura 2000	SACs	Mituva Rivers valley below Pauliai II	142.636
Tauragė County	Natura 2000	SACs	Nemunas valley beside Kalveliai	445.145
Tauragė County	Natura 2000	SACs	Nemunas valley beside Palėkiai	421.302
Tauragė County	Natura 2000	SACs	Nemunas River in Panemuniai Countyal Park	521.992
Tauragė County	Natura 2000	SACs	Nemunas River in Rambynas Countyal Park	178.981

Area	Types of protected area	Area type	Name	Area in the area, ha
Tauragė County	Natura 2000	SACs	Norkišké forest	55.794
Tauragė County	Natura 2000	SACs	Pagramantis Countyal Park	11304.562
Tauragė County	Natura 2000	SACs	Panemunė meadows	2740.543
Tauragė County	Natura 2000	SACs	Paršežerys-Lūkstas swamp complex	1121.465
Tauragė County	Natura 2000	SACs	Pleinė swamp	0.274
Tauragė County	Natura 2000	SACs	Ragainė vingis	688.845
Tauragė County	Natura 2000	SACs	Seredžius meadows	11.327
Tauragė County	Natura 2000	SACs	Upyna Village surroundings	572.531
Tauragė County	Natura 2000	SACs	Vainutas forests	1791.765
Tauragė County	Natura 2000	SACs	Viešvilė High River Swamp District	5638.376
Tauragė County	Natura 2000	SACs	Šaltaičiai Village surroundings	71.876
Tauragė County	Natura 2000	SACs	Šaltuona Rivers valley	66.119
Tauragė County	Natura 2000	SACs	Šereitlaukis forest	1480.524
Tauragė County	Natura 2000	SACs	Šešuvis River below Pašešuvys	899.176
Tauragė County	Natura 2000	SACs	Šilinė surroundings	36.446
Tauragė County	Natura 2000	SACs	Šunija River	184.948
Tauragė County	Natura 2000	SACs	Žalioji forest	223.627
Tauragė County	Natura 2000	SPAs	Blinstrubiškis forest	0.337
Tauragė County	Natura 2000	SPAs	Dubysa Rivers valley	107.979
Tauragė County	Natura 2000	SPAs	Nemunas valley meadows between Raudonė and Gelgaudiškis	261.769
Tauragė County	Natura 2000	SPAs	Nemunas valley meadows beside Viešvilė	595.203
Tauragė County	Natura 2000	SPAs	The banks of the Nemunas River and the islands between Kulautuva and Smalininkai	1035.922
Tauragė County	Natura 2000	SPAs	Senrusnė and Sennemunė Lakes	1585.668
Tauragė County	Natura 2000	SPAs	Vainutas forests	3967.984
Tauragė County	Natura 2000	SPAs	Visbarai Fishing Ponds	661.259
Tauragė County	Natura 2000	SPAs	Šešuvis and Jūra Rivers valleys	1352.515
Elektrėnai Municipality	Natura 2000	SACs	Bražuolė River valley below Vilūniškiai	28.572
Elektrėnai Municipality	Natura 2000	SACs	Kaukinė forest	0.018
Elektrėnai Municipality	Natura 2000	SACs	Surroundings of Neris Loops	2633.768
Elektrėnai Municipality	Natura 2000	SACs	Neris River	197.956
Elektrėnai Municipality	Natura 2000	SACs	Pipiriškės surroundings	72.782
Elektrėnai Municipality	Natura 2000	SACs	Strošiūnai šilas	82.229
Elektrėnai Municipality	Natura 2000	SACs	Vievis surroundings	0.67
Šalčininkai District Municipality	Natura 2000	SACs	Gauja River valley	481.46
Šalčininkai District Municipality	Natura 2000	SACs	Jurgelionys meadows	6.741
Šalčininkai District Municipality	Natura 2000	SACs	Kernavas swamp	1449.449
Šalčininkai District Municipality	Natura 2000	SACs	Merkys meadows beside Pamerkys	8.488
Šalčininkai District	Natura 2000	SACs	Merkys valley beside Turgeliai	2.509

Area	Types of protected area	Area type	Name	Area in the area, ha
Municipality				
Šalčininkai District Municipality	Natura 2000	SACs	Merkys River	805.252
Šalčininkai District Municipality	Natura 2000	SACs	Naujakiemis surroundings	123.487
Šalčininkai District Municipality	Natura 2000	SACs	Papis Lake	359.396
Šalčininkai District Municipality	Natura 2000	SACs	Rūdinkai Heath	841.418
Šalčininkai District Municipality	Natura 2000	SACs	Stakai forest	692.762
Šalčininkai District Municipality	Natura 2000	SACs	Verseka River	37.259
Šalčininkai District Municipality	Natura 2000	SACs	Visinčia Rivers valley beside Gudeliai	139.589
Šalčininkai District Municipality	Natura 2000	SACs	Šalčia and Visinčia Rivers valleys	531.108
Šalčininkai District Municipality	Natura 2000	SPAs	Baltoji Vokė wetland	359.396
Šalčininkai District Municipality	Natura 2000	SPAs	Rūdinkai Wood	19102.504
Širvintos District Municipality	Natura 2000	SACs	Alionys swamp	1751.852
Širvintos District Municipality	Natura 2000	SACs	Astruvka forest	648.954
Širvintos District Municipality	Natura 2000	SACs	Gerviraistis swamp	360.198
Širvintos District Municipality	Natura 2000	SACs	Kernavė surroundings	191.669
Širvintos District Municipality	Natura 2000	SACs	Neris River	163.874
Širvintos District Municipality	Natura 2000	SACs	Šešuolėliai forest	509.521
Širvintos District Municipality	Natura 2000	SACs	Širvinta River and its valleys	526.914
Širvintos District Municipality	Natura 2000	SACs	Širvinta Rivers valleys	212.068
Širvintos District Municipality	Natura 2000	SACs	Žibėnai waterbody surroundings	41.641
Švenčionys District Municipality	Natura 2000	SACs	Acintas and Perūnas swamps	1035.83
Švenčionys District Municipality	Natura 2000	SACs	Adučiškis swamp	2480.524
Švenčionys District Municipality	Natura 2000	SACs	Algirdėnai swamp	90.931
Švenčionys District Municipality	Natura 2000	SACs	Asvejos Lake District	4886.139
Švenčionys District Municipality	Natura 2000	SACs	Aukštaitija National Park	5210.935
Švenčionys District Municipality	Natura 2000	SACs	Baltasamanė swamp	600.899
Švenčionys District Municipality	Natura 2000	SACs	Eituniškė swamp and Lygiaraistis	287.221
Švenčionys District Municipality	Natura 2000	SACs	Gelednė forest	522.736
Švenčionys District Municipality	Natura 2000	SACs	Guntauninkai forest	1364.511
Švenčionys District Municipality	Natura 2000	SACs	Ilgis Lake (II)	17.082
Švenčionys District Municipality	Natura 2000	SACs	Kretuonas lake and its surroundings	1972.291

Area	Types of protected area	Area type	Name	Area in the area, ha
Švenčionys District Municipality	Natura 2000	SACs	Kretuonykštis Lake and surrounding area	276.66
Švenčionys District Municipality	Natura 2000	SACs	Labanoras County Park	31466.998
Švenčionys District Municipality	Natura 2000	SACs	Meržežeris Lake	12.978
Švenčionys District Municipality	Natura 2000	SACs	Merkmenys Lake	0.278
Švenčionys District Municipality	Natura 2000	SACs	Mera River and its valley	120.662
Švenčionys District Municipality	Natura 2000	SACs	Milašius ir Puzarauškinė forests	0.02
Švenčionys District Municipality	Natura 2000	SACs	Neris River	93.484
Švenčionys District Municipality	Natura 2000	SACs	Neversčiai forest	11.408
Švenčionys District Municipality	Natura 2000	SACs	Pabradė meadows	409.809
Švenčionys District Municipality	Natura 2000	SACs	Salotis Lake	89.759
Švenčionys District Municipality	Natura 2000	SACs	Saria River	77.147
Švenčionys District Municipality	Natura 2000	SACs	Sėtikė River and its valley	180.745
Švenčionys District Municipality	Natura 2000	SACs	Žeimena River	1872.371
Švenčionys District Municipality	Natura 2000	SPAs	Adučiškis-Guntauninkai forests	3844.993
Švenčionys District Municipality	Natura 2000	SPAs	Asveja Lake area	4610.399
Švenčionys District Municipality	Natura 2000	SPAs	Gelednė forest	1654.624
Švenčionys District Municipality	Natura 2000	SPAs	Kretuonas Lake	1181.855
Švenčionys District Municipality	Natura 2000	SPAs	Labanoras Wood	31333.973
Švenčionys District Municipality	Natura 2000	SPAs	Pabradė meadows	409.81
Švenčionys District Municipality	Natura 2000	SPAs	Svyla Rivers valley	0.275
Švenčionys District Municipality	Natura 2000	SPAs	Western part of Aukštaitija National Park	6129.344
Trakai District Municipality	Natura 2000	SACs	Akis Lake and its surroundings	18.332
Trakai District Municipality	Natura 2000	SACs	Alsakiai forest	11.558
Trakai District Municipality	Natura 2000	SACs	Bitiškės Lake	37.8
Trakai District Municipality	Natura 2000	SACs	Bražuolė Rivers headwaters	43.003
Trakai District Municipality	Natura 2000	SACs	Bražuolė Rivers valleys beside Gratiškės	132.158
Trakai District Municipality	Natura 2000	SACs	Jurgionys forest	658.702
Trakai District Municipality	Natura 2000	SACs	Kiemeliškės Village surroundings	94.307
Trakai District Municipality	Natura 2000	SACs	Mergiškiai forest	156.392
Trakai District Municipality	Natura 2000	SACs	Merkys River	96.451
Trakai District	Natura 2000	SACs	Mošia Lake	39.842

Area	Types of protected area	Area type	Name	Area in the area, ha
Municipality				
Trakai District Municipality	Natura 2000	SACs	Naujasis Lentvaris surroundings	146.414
Trakai District Municipality	Natura 2000	SACs	Surroundings of Neris Loops	483.862
Trakai District Municipality	Natura 2000	SACs	Neris River	62.295
Trakai District Municipality	Natura 2000	SACs	Papis Lake	628.871
Trakai District Municipality	Natura 2000	SACs	Paukšteliškės Village surroundings	25.83
Trakai District Municipality	Natura 2000	SACs	Plomėnai swamp	425.785
Trakai District Municipality	Natura 2000	SACs	Skaistis Lake	288.057
Trakai District Municipality	Natura 2000	SACs	Skrebys forest	117.995
Trakai District Municipality	Natura 2000	SACs	Solis Lake and its surroundings	239.385
Trakai District Municipality	Natura 2000	SACs	Spindžius forest	1382.423
Trakai District Municipality	Natura 2000	SACs	Ubiškės forest	225.714
Trakai District Municipality	Natura 2000	SACs	Varnikai forest	435.095
Trakai District Municipality	Natura 2000	SACs	Verknė Middle River	22.042
Trakai District Municipality	Natura 2000	SACs	Širmukas Lake	4.882
Trakai District Municipality	Natura 2000	SACs	Škilietai Lakes surroundings	157.151
Trakai District Municipality	Natura 2000	SACs	Žalioji Village surroundings	37.737
Trakai District Municipality	Natura 2000	SACs	Žydkaimis swamps	104.322
Trakai District Municipality	Natura 2000	SPAs	Baltoji Vokė wetland	628.871
Ukmergė District Municipality	Natura 2000	SACs	Adomiškis swamp	66.074
Ukmergė District Municipality	Natura 2000	SACs	Dirvonai lakes and swamps	35.316
Ukmergė District Municipality	Natura 2000	SACs	Gemeliškis Village meadows	7.448
Ukmergė District Municipality	Natura 2000	SACs	Kazimierava swamp	76.787
Ukmergė District Municipality	Natura 2000	SACs	Laukėnai surroundings	201.167
Ukmergė District Municipality	Natura 2000	SACs	Petrašiūnai forest	172.794
Ukmergė District Municipality	Natura 2000	SACs	Siesartis River and its valley	226.93
Ukmergė District Municipality	Natura 2000	SACs	Siesartis River beside Valais	366.96
Ukmergė District Municipality	Natura 2000	SACs	Svirplinė swamp	24.686
Ukmergė District Municipality	Natura 2000	SACs	Taujėnai-Užulėnis forests	17678.811
Ukmergė District Municipality	Natura 2000	SACs	Viliukai forest	908.948
Ukmergė District Municipality	Natura 2000	SACs	Širvinta River and its valleys	146.313

Area	Types of protected area	Area type	Name	Area in the area, ha
Ukmergė District Municipality	Natura 2000	SACs	Šventoji Rivers Middle River	728.867
Ukmergė District Municipality	Natura 2000	SACs	Žuvintė River and its valleys	219.65
Ukmergė District Municipality	Natura 2000	SPAs	Taujėnai-Užulėnis forests	17678.477
Vilnius District Municipality	Natura 2000	SACs	Alionys swamp	345.386
Vilnius District Municipality	Natura 2000	SACs	Asveja lake district	1735.859
Vilnius District Municipality	Natura 2000	SACs	Gegužinė swamp	43.202
Vilnius District Municipality	Natura 2000	SACs	Gerviraistis swamp	0.187
Vilnius District Municipality	Natura 2000	SACs	Giedraitiskės swamp	72.859
Vilnius District Municipality	Natura 2000	SACs	Girija forest	126.678
Vilnius District Municipality	Natura 2000	SACs	Grioviai Village surroundings	198.387
Vilnius District Municipality	Natura 2000	SACs	Jusinė River	25.576
Vilnius District Municipality	Natura 2000	SACs	Kena River	257.406
Vilnius District Municipality	Natura 2000	SACs	Kernavė surroundings	19.983
Vilnius District Municipality	Natura 2000	SACs	Lavoriškės forest	2265.829
Vilnius District Municipality	Natura 2000	SACs	Medininkai meadows	15.73
Vilnius District Municipality	Natura 2000	SACs	Mūrinė forest	17.82
Vilnius District Municipality	Natura 2000	SACs	Naujaneriai surroundings	50.676
Vilnius District Municipality	Natura 2000	SACs	Neris kilpų surroundings	2685.325
Vilnius District Municipality	Natura 2000	SACs	Neris River	516.762
Vilnius District Municipality	Natura 2000	SACs	Papis Lake	403.334
Vilnius District Municipality	Natura 2000	SACs	Pravalas Lake and its surroundings	97.992
Vilnius District Municipality	Natura 2000	SACs	Raudonoji bala	134.902
Vilnius District Municipality	Natura 2000	SACs	Suktiškės forest part	7.202
Vilnius District Municipality	Natura 2000	SACs	Taurija forest	505.957
Vilnius District Municipality	Natura 2000	SACs	Vanagynė forest	43.898
Vilnius District Municipality	Natura 2000	SACs	Vilnia Rivers valley beside Mickūnai	205.336
Vilnius District Municipality	Natura 2000	SACs	Šveicarija forest	798.559
Vilnius District Municipality	Natura 2000	SACs	Žeimena River	64.021
Vilnius District Municipality	Natura 2000	SACs	Žibėnai waterbody surroundings	14.103
Vilnius District Municipality	Natura 2000	SPAs	Asveja lake district	1718.715
Vilnius District	Natura 2000	SPAs	White Vokė wetland	403.334

Area	Types of protected area	Area type	Name	Area in the area, ha
Municipality				
Vilnius District Municipality	Natura 2000	SPAs	Kazimierava wetland	145.094

Table 8. "Natura 2000" areas in the Programme implementation area in Poland⁵

Name	Protected area type	Type	Area, km ²	Sub-County
Biebrzanski National Park (Biebrzanski Park Narodowy)	Ramsar area, International importance wetland	International importance	652,38	Suwalki
Lake of Seven Islands Nature Reserve (Rezerwat przyrody "Jezioro Siedmiu Wysp")	Ramsar area, International importance wetland	International importance	19,72	Suwalki
Narew River National Park	Ramsar area, International importance wetland	International importance	122,50	Ełk
Wigry National Park	Ramsar area, International importance wetland	International importance	136,62	Ełk
Dolina Biebrzy	SACs	Natura 2000	1209,51	Suwalki
Dolina Górnej Rospudy	SACs	Natura 2000	40,62	Ełk
Dolina Pisy	SACs	Natura 2000	32,19	Ełk
Dolina Szeszupy	SACs	Natura 2000	16,97	Suwalki
Jeleniewo	SACs	Natura 2000	58,96	Suwalki
Jezioro Woszczelskie	SACs	Natura 2000	3,13	Ełk
Mamerki	SACs	Natura 2000	1,62	Suwalki
Mazurskie Bagna	SACs	Natura 2000	15,67	Suwalki
Mokradła Kolneńskie i Kurpiowskie	SACs	Natura 2000	14,45	Suwalki
Murawy na Pojezierzu Ełckim	SACs	Natura 2000	0,77	Białystok, Suwalki
Murawy na Poligonie Orzysz	SACs	Natura 2000	12,96	Białystok, Suwalki
Narwiańskie Bagna	SACs	Natura 2000	68,17	Białystok
Niecka Skaliska	SACs	Natura 2000	113,67	Ełk
Ostoja Augustowska	SACs	Natura 2000	1067,96	Białystok, Suwalki
Ostoja Borecka	SACs	Natura 2000	252,97	Białystok
Ostoja Knyszyńska	SACs	Natura 2000	1357,21	Białystok
Ostoja nad Oświnem	SACs	Natura 2000	33,52	Ełk
Ostoja Narwiańska	SACs	Natura 2000	185,75	Ełk
Ostoja Piska	SACs	Natura 2000	577,56	Suwalki
Ostoja Północnomazurska	SACs	Natura 2000	145,52	Białystok
Ostoja Suwalska	SACs	Natura 2000	63,35	Ełk
Ostoja w Dolinie Górnej Narwi	SACs	Natura 2000	190,43	Ełk
Ostoja Wigierska	SACs	Natura 2000	160,33	Suwalki
Pojezierze Sejneńskie	SACs	Natura 2000	135,95	Białystok
Puszcza Romincka	SACs	Natura 2000	147,24	Białystok
Torfowiska Gór Sudawskich	SACs	Natura 2000	0,98	Białystok
Torfowisko Zocie	SACs	Natura 2000	0,66	Suwalki
Źródłiska Wzgórz Sokólskich	SACs	Natura 2000	0,49	Białystok
Bagienna Dolina Narwi	SPAs	Natura 2000	234,21	Suwalki
Bagna Nietlickie	SPAs	Natura 2000	40,75	Białystok
Bagno Wizna	SPAs	Natura 2000	144,45	Ełk
Dolina Górnej Narwi	SPAs	Natura 2000	183,39	Białystok
Jezioro Dobskie	SPAs	Natura 2000	69,76	Białystok

⁵ <https://www.protectedplanet.net/country/POL>

Name	Protected area type	Type	Area, km2	Sub-County
Jezioro Oświn i okolice	SPAs	Natura 2000	25,13	Suwalki
Lasy Skaliskie	SPAs	Natura 2000	126,24	Białystok, Suwalki
Ostoja Biebrzańska	SPAs	Natura 2000	1481,94	Białystok
Ostoja Poligon Orzysz	SPAs	Natura 2000	211,74	Ełk
Ostoja Warmińska	SPAs	Natura 2000	1451,88	Suwalki
Puszcza Augustowska	SPAs	Natura 2000	1340,38	Ełk
Puszcza Borecka	SPAs	Natura 2000	189,30	Białystok
Puszcza Knyszyńska	SPAs	Natura 2000	1392,17	Suwalki
Puszcza Piska	SPAs	Natura 2000	1725,85	Ełk

3.2.3 May the Implementation of the Plan or Programme Result in Exceeding of Environmental Quality Standards of the Area?

No deterioration of the quality of the environment or exceeding of standards is expected during the implementation of the Programme; the Programme provides for measures to improve the quality of the environment. Measures are provided to promote cross-border cooperation in finding solutions for the management of systemic resources and ecosystem services and in reducing environmental impacts, climate change risks and anthropogenic pollution.

3.2.4 Is the Area Sensitive and (or) Valuable from an Environmental Point of View?

The Nemunas, Merkys, Šešupė, Jūra, Narew, Biebrza, Pisa and Briedis rivers flow along the border section together with many smaller rivers and streams. The Programme area includes the unique territory of the Great Masurian Lakes, Suwalki, Augustów Lakes, Žuvintas and Vistytis Lakes and others. Most of the Programme area refers to the Nemunas River Basin District, on the Polish side - to the Vistula River Basin District (fig. 3).

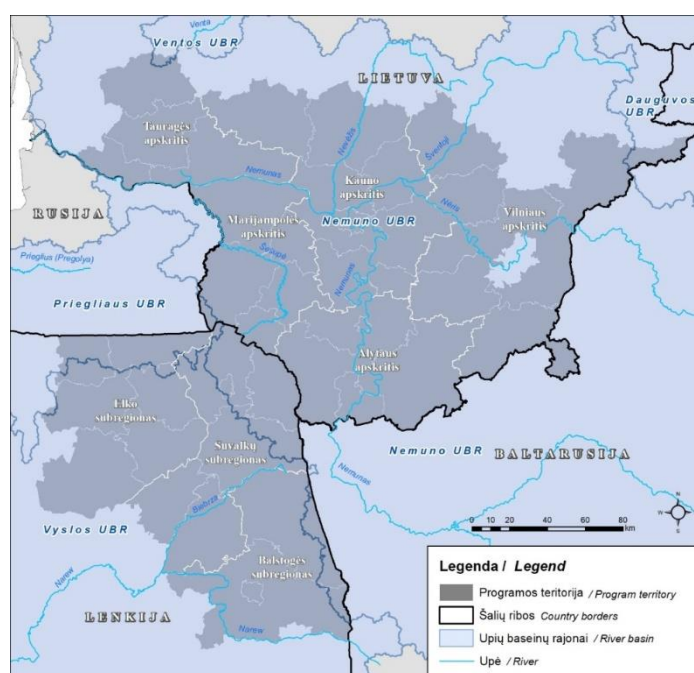


Fig. 3. River Basin Districts in the Programme area

4 Information on the Significance of the Consequences of the Implementation of the Programme for the Environment

The Programme does not cover large-scale infrastructure or other projects that are provided for in Annexes 1 and 2 of the EIA Law and may have an impact on the environment.

The objectives of the Programme are directly aimed at the protection of nature, biodiversity and green infrastructure, the reduction of water pollution, the promotion of sustainable tourism in nature and culture, the development of health services, cooperation between countys and different social groups and will have major positive effects on the environment. The measures provided for in the Programme promote the implementation of environmentally friendly solutions, the development of common smart, sustainable and modern natural and cultural heritage, the conservation, restoration and management of protected areas and solutions, and the implementation of measures to reduce water pollution. The measures of the Programme are expected to effectively reduce the negative impact on aquatic ecosystems, ensure the sustainable use of natural and cultural resources and ecosystem services.

The expected consequences of the Programme for the environment have been assessed by filling in a table of consequences, assessing each objective of the Programme in relation to the components of the environment:

- + expected major positive consequences.
- expected major negative consequences.
- + / - expected both positive and negative consequences.
- 0 no major positive and negative consequences expected.
- ? insufficient information.

Table 9. Significance of the Programme implementation consequences on the environment

Components of the environment	Programme solution (objectives)					Reasons, comments
	1.1 specific objective. (vii) Strengthening of the protection and conservation of nature, biodiversity and green infrastructure, including in urban areas, and reduction of all forms of pollution.	2.1 specific objective. (vi) Ensure equal access to health care services by increasing the resistance of health care systems, including primary health care, and promote the transition from institutional to family and community-based care.	2.2 specific objective. (v) Strengthen the role of culture and sustainable tourism in economic development, social inclusion and social innovation.	3.1 specific objective. (iii) Strengthening of mutual trust, in particular by promoting actions based on people-to-people contacts.	3.2 specific objective. (vi) Other actions in support of better management of cooperation.	
	Significance of the environmental consequences of the implementation of the plan or Programme solutions					
Surface water	+	0	0	0	0	Expected activities referred to objective 1.1 - joint actions to reduce water pollution (pesticides, heavy metals, other pollutants), including water pollution in river basins; the joint development of pilot water and wastewater solutions will have a positive impact on reducing pollution.
Underground water	+	0	0	0	0	
Air	0	0	0	0	0	The activities provided for in the Programme will have no positive or negative consequences for the component.
Climate factors	+	0	0	0	0	The maintenance and improvement of green public spaces in rural and urban areas will have positive consequences for climate change (rainwater, GHG sequestration, reduction of "heat islands" in towns).
Soil	0	0	0	0	0	The activities provided for in the Programme will have no positive or negative consequences for the component.
Natural habitats and biodiversity (including consequences for fauna and flora)	+	0	0	0	0	Expected activities referred to objective 1.1 - joint actions and cooperation in the field of environmental education and awareness-raising, exchange of experience, cooperation and joint actions to identify and strengthen functional links and (or) areas related to environmental protection and nature conservation in the Programme area and its immediate vicinity, increasing the positive environmental impact of the

						border may have indirect positive effects on biodiversity. Adaptation of protected areas to sustainable tourism and education is carried out in accordance with the area nature management plans, territorial regulations, protection regulations,
Landscape	+	0	+	0	0	The maintenance and improvement of green public spaces in rural and urban areas is expected to have a positive impact. There is also a positive impact on the activities referred to objective 2.2 - Joint initiatives in the field of maintenance and restoration of cultural and natural heritage objects.
Cultural heritage	0	0	+	0	0	Positive consequences for cultural heritage are expected due to the activities referred to objective 2.2 - development of joint tourism and cultural routes; development of joint tourism and cultural products; joint initiatives in the field of maintenance and restoration of cultural and natural heritage objects.
Material anthropogenic resources	+	+	+	+	+	The Programme does not provide for the investment in high-value material resources and infrastructure. Some objectives (3.1 and 3.2) provide for the acquisition of small scope of equipment and investments required for any form of cooperation. All the objectives of the Programme include the strengthening of human resources - training, initiatives for the exchange of experience, cooperation, etc. Improvement of the competencies of doctors, fire safety specialists, vocational training, communities, tourism, environmental sector. The activities provided for by the Programme will also promote cross-border tourism activities, natural and cultural heritage tourism, and the use of ecosystem services - positive social and economic consequences for the county.
Non-renewable and renewable natural resources	+	0	0	0	+	Potential indirect positive effects on the use of resources: objective 3.2 provides for one of the activities: exchange of experience on circular economy and energy efficiency policies. The activities of the Programme include the sustainable use of natural resources and ecosystem services.

Human health	+	+	+	0	0	<p>Objective 2.1 anticipates the activities that will have a positive impact on health services:</p> <ul style="list-style-type: none"> - joint development or restoration of health services, long-term care services, helplines, e-health services, emergency services, general training for doctors, support personnel and volunteers; - joint actions and cooperation to promote active and healthy aging; - development of mobile healthcare services; - joint actions and cooperation on mental health. <p>Cultural and environmentally sustainable tourism infrastructure promotes activity of people, helps to maintain physical and emotional health.</p>
Human well-being	+	+	+	+	+	All the objectives of the Programme contribute to well-being of people.
Human safety	0	+	0	0	+	Strengthening the competencies of doctors and fire safety specialists is provided for in the activities referred to objectives 2.1 and 3.2, with positive consequences.
Interactions between environmental components and their consequences	+	+	+	+	+	The solutions of the Programme will not have a significant negative impact on the components of the environment and the consequences for their interaction. Significant positive consequences of the Programme solutions are expected.

5 Other Information

5.1 Information on the Measures provided for to Prevent, Reduce or Compensate for the Negative Effects on the Environment

The Programme does not cover large-scale infrastructure or other projects that are provided for in Annexes 1 and 2 of the EIA Law and may have an impact on the environment.

The expected activities referred to objective 1.1 - joint actions and cooperation in the field of environmental education and awareness-raising, exchange of experience, cooperation and joint actions to identify and strengthen functional links and (or) areas related to environmental protection and nature conservation in the Programme area and its immediate vicinity, increasing the positive environmental impact of the border may have indirect positive effects on biodiversity. Adaptation of protected areas to sustainable tourism and education will promote the sustainable use of natural resources and ecosystem services.

Restrictions on economic activities and conditions for the performance of activities have been established in the most environmentally sensitive areas - protected areas and Natura 2000 areas within their scope:

- Law on Protected Areas of the Republic of Lithuania,
- Individual regulations of protected areas, protection regulations,
- Law on Special Conditions of Land and Forest Use of the Republic of Lithuania,
- Law on Environmental Impact Assessment of Proposed Economic Activities of the Republic of Lithuania,
- Law on Territorial Planning of the Republic of Lithuania,
- Order No. D1-255 of the Minister of Environment as of 22-05-2006 "On the Approval of the Description of the Procedure for Determining the Significance of the Impact of Plans, Programs and Proposed Economic Activities on Established or Potential Natura 2000 Areas".

The significance of the impact of the activity on the established or potential Natura 2000 areas shall be determined when planning the economic activity in the Natura 2000 areas or when the implementation of the activity will be related to the established or potential Natura 2000 areas or the environment close to them⁶. The conclusion on the significance of activities for Natura 2000 areas is adopted by the park authorities or VSTT.

Additional conditions for determining the significance of Natura 2000 activities in such areas may be imposed in order to avoid negative effects on protected values or to reduce them to insignificant levels.

In potential Natura 2000 areas that are not included in and are not regulated in national protected areas, the main tool for determining whether the proposed activity is permissible and under what conditions is

⁶ Order No. D1-255 of the Minister of Environment as of 22 May 2006 "On the Approval of the Description of the Procedure for Determining the Significance of the Impact of Plans, Programs and Proposed Economic Activities on Established or Potential Natura 2000 Areas".

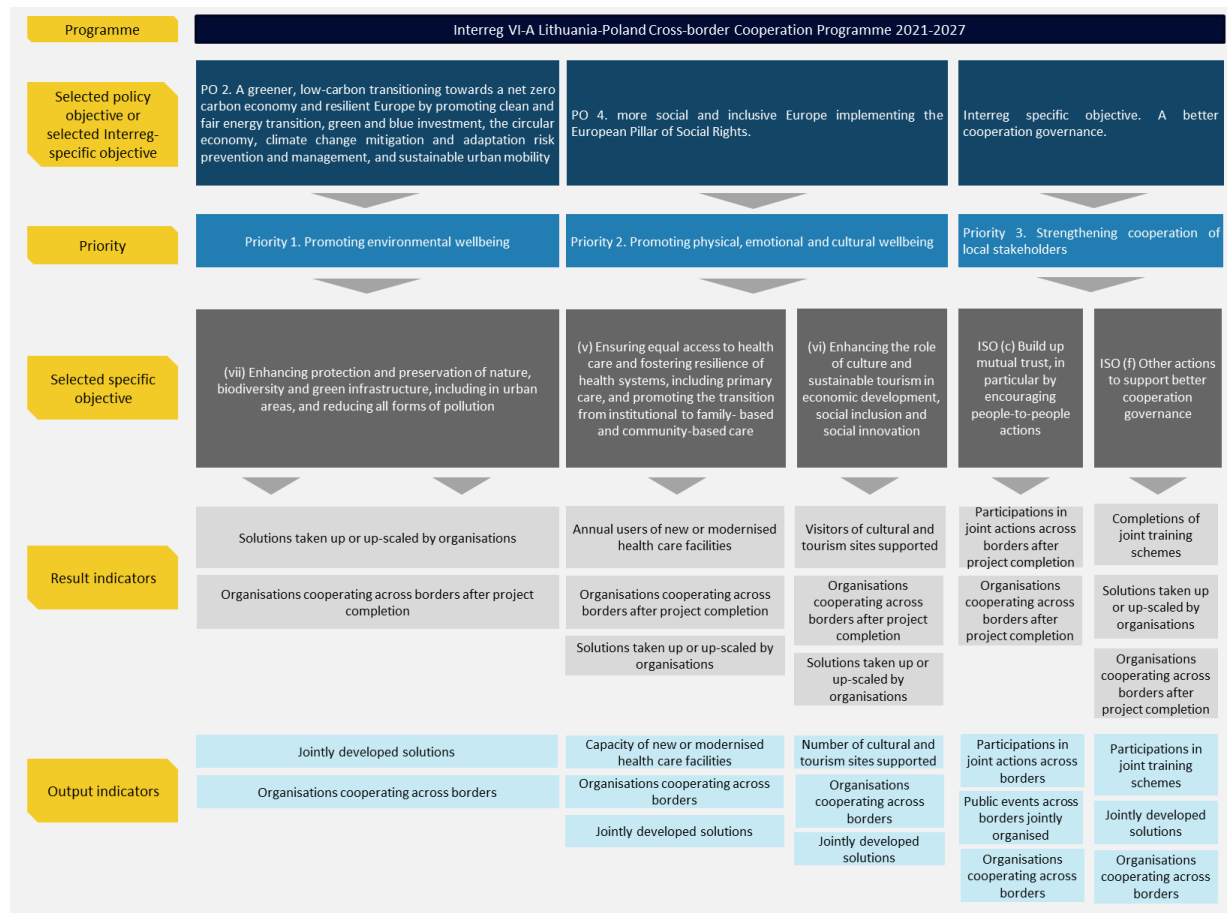
the determining of significance of the impact of plans, programs and proposed economic activities on established or potential Natura 2000 areas. The selection of measures to eliminate or reduce the impact on biodiversity in Natura 2000 areas shall consider the general requirements set out in the General Regulations for Habitats or Important Bird Areas, adapting them to the scale and nature of the activity and the conditions and characteristics of the area.

5.2 Information about Possible Public Dissatisfaction with the Plan or Programme

Public dissatisfaction is not expected. The measures of the Programme in various fields will contribute to the improvement of human well-being. Measures are planned to reduce social exclusion, involve society in decision-making, adapt to climate change, create a cleaner environment, promote countyal tourism and entrepreneurship, improve infrastructure.

Annexes

Annex 1. Programme Intervention Logic



Annex 2. Protected Areas

Nr	Name	Protected area type	Type	Area, km ²	Subcounty
1.	Mazurski Park Krajobrazowy	Landscape Reserve	State protected	562,35	Suwałki
2.	Park Krajobrazowy Puszczy Knyszyńskiej Im. Profesora Witolda Sławińskiego	Landscape Reserve	State protected	730,00	Białystok
3.	Park Krajobrazowy Puszczy Rominckiej	Landscape Reserve	State protected	147,91	Suwałki
4.	Suwałski Park Krajobrazowy	Landscape Reserve	State protected	63,23	Suwałki
5.	Biebrzański Park Narodowy	National Park	State protected	596,11	Suwałki
6.	Narwiański Park Narodowy	National Park	State protected	67,92	Białystok, Suwałki
7.	Wigierski Park Narodowy	National Park	State protected	150,57	Suwałki
8.	Antoniuk	Nature Reserve	State protected	0,70	Białystok, Suwałki
9.	Bahno W Borkach	Nature Reserve	State protected	2,90	Białystok
10.	Bajory	Nature Reserve	State protected	2,15	Suwałki
11.	Bartosze	Nature Reserve	State protected	1,90	Suwałki
12.	Bobruczek	Nature Reserve	State protected	0,01	Ełk
13.	Boczki	Nature Reserve	State protected	1,08	Suwałki
14.	Borki	Nature Reserve	State protected	4,39	Ełk
15.	Brzozowy Grąd	Nature Reserve	State protected	0,00	Ełk
16.	Budzisk	Nature Reserve	State protected	3,40	Ełk
17.	Chomontowszczyzna	Nature Reserve	State protected	2,34	Ełk
18.	Cisowy Jar	Nature Reserve	State protected	0,11	Ełk
19.	Cmentarzysko Jaćwingów	Nature Reserve	State protected	0,03	Ełk, Suwałki
20.	Czapliniec Belda	Nature Reserve	State protected	0,11	Ełk
21.	Czarnówko	Nature Reserve	State protected	0,32	Ełk
22.	Czerwona Struga	Nature Reserve	State protected	0,04	Ełk
23.	Dziki Kąt	Nature Reserve	State protected	0,36	Ełk
24.	Głazowisko Bachanowo Nad Czarną Hańczę	Nature Reserve	State protected	0,01	Ełk
25.	Głazowisko Łopuchowskie	Nature Reserve	State protected	0,16	Ełk
26.	Glinki	Nature Reserve	State protected	0,02	Białystok
27.	Góra Pieszczana	Nature Reserve	State protected	2,20	Suwałki
28.	Gorbacz	Nature Reserve	State protected	2,22	Białystok, Suwałki
29.	Jałówka	Nature Reserve	State protected	2,75	Białystok, Suwałki
30.	Jesionowe Góry	Nature Reserve	State protected	3,76	Białystok, Suwałki
31.	Jezioro Koło Drozdowa	Nature Reserve	State protected	0,10	Białystok
32.	Jezioro Dobskie	Nature Reserve	State protected	18,53	Ełk
33.	Jezioro Hańcza	Nature Reserve	State protected	3,05	Ełk
34.	Jezioro Kalejty	Nature Reserve	State protected	7,61	Ełk
35.	Jezioro Kolno	Nature Reserve	State protected	2,67	Ełk
36.	Jezioro Kożuchy	Nature Reserve	State protected	0,30	Ełk
37.	Jezioro Nidzkie	Nature Reserve	State protected	29,47	Ełk
38.	Jezioro Pogubie Wielkie	Nature Reserve	State protected	7,15	Ełk
39.	Jezioro Siedmiu Wysp	Nature Reserve	State protected	17,61	Ełk
40.	Jezioro Warnoły	Nature Reserve	State protected	3,76	Białystok, Suwałki
41.	Jezioro Wiejki	Nature Reserve	State protected	0,22	Ełk, Suwałki
42.	Jezioro Zdedy	Nature Reserve	State protected	1,81	Ełk
43.	Karczmisko	Nature Reserve	State protected	0,20	Ełk
44.	Kozi Rynek	Nature Reserve	State protected	1,46	Ełk
45.	Kozłowy Ług	Nature Reserve	State protected	1,39	Ełk, Suwałki
46.	Krasne	Nature Reserve	State protected	0,85	Ełk

Nr	Name	Protected area type	Type	Area, km ²	Subcounty
47.	Krutynia	Nature Reserve	State protected	10,37	Ełk
48.	Krzemianka	Nature Reserve	State protected	2,30	Ełk, Suwałki
49.	Krzemieńskie Góry	Nature Reserve	State protected	0,79	Ełk
50.	Kukle	Nature Reserve	State protected	3,42	Ełk
51.	Kulikówka	Nature Reserve	State protected	0,10	Ełk
52.	Kuriańskie Bagno	Nature Reserve	State protected	17,14	Ełk
53.	Las Cieliczański	Nature Reserve	State protected	3,71	Ełk
54.	Las Zwierzyniecki	Nature Reserve	State protected	0,34	Ełk
55.	Ławski Las I	Nature Reserve	State protected	1,09	Ełk
56.	Ławski Las II	Nature Reserve	State protected	0,75	Ełk, Suwałki
57.	Łempis	Nature Reserve	State protected	1,32	Ełk
58.	Lipowy Jar	Nature Reserve	State protected	0,49	Ełk
59.	Mały Borek	Nature Reserve	State protected	0,90	Ełk
60.	Mazury	Nature Reserve	State protected	3,88	Białystok
61.	Mechacz Wielki	Nature Reserve	State protected	1,46	Białystok, Suwałki
62.	Międzyrzecze	Nature Reserve	State protected	2,51	Ełk
63.	Nietlickie Bagno	Nature Reserve	State protected	11,39	Ełk
64.	Nietupa	Nature Reserve	State protected	2,73	Ełk
65.	Ostoja Bobrów Marycha	Nature Reserve	State protected	0,56	Białystok
66.	Perkuć	Nature Reserve	State protected	2,08	Suwałki
67.	Perkuny	Nature Reserve	State protected	0,03	Białystok
68.	Piłackie Wzgórza	Nature Reserve	State protected	2,78	Białystok
69.	Półwysep I Wyspy Na Jeziorze Rydzewskim	Nature Reserve	State protected	0,08	Suwałki
70.	Pomorze	Nature Reserve	State protected	0,21	Białystok
71.	Ptasia Wyspa	Nature Reserve	State protected	0,04	Suwałki
72.	Rabinówka	Nature Reserve	State protected	6,57	Białystok
73.	Ruda	Nature Reserve	State protected	0,03	Ełk
74.	Rutka	Nature Reserve	State protected	0,49	Ełk
75.	Spytkowo	Nature Reserve	State protected	0,03	Białystok
76.	Stara Dębina	Nature Reserve	State protected	0,33	Białystok
77.	Stara Ruda	Nature Reserve	State protected	0,76	Ełk
78.	Stare Biele	Nature Reserve	State protected	2,56	Suwałki
79.	Starodrzew Szyndzielski	Nature Reserve	State protected	0,80	Suwałki
80.	Starożyn	Nature Reserve	State protected	2,98	Ełk
81.	Struga Żytkiejmska	Nature Reserve	State protected	4,71	Białystok
82.	Surążkowo	Nature Reserve	State protected	1,37	Białystok
83.	Szelągówka	Nature Reserve	State protected	0,62	Suwałki
84.	Sztynort	Nature Reserve	State protected	4,48	Suwałki
85.	Taboły	Nature Reserve	State protected	3,03	Białystok
86.	Tobolinka	Nature Reserve	State protected	0,05	Ełk
87.	Torfowisko Na Tatarskiej Górze	Nature Reserve	State protected	0,02	Suwałki
88.	Uroczysko Kramnik	Nature Reserve	State protected	0,77	Ełk
89.	Wielki Las	Nature Reserve	State protected	1,29	Białystok
90.	Wyspa Lipowa Na Jeziorze Szałek Wielki	Nature Reserve	State protected	0,03	Białystok
91.	Wyspy Na Jeziorze Mamry I Kisajno	Nature Reserve	State protected	2,15	Ełk, Suwałki
92.	Woronicza	Nature Reserve	State protected	1,39	Ełk
93.	Bagien Mażańskich	Landscape Reserve	State protected	11,70	Ełk, Suwałki
94.	Dolina Biebrzy	Landscape Reserve	State protected	283,74	Ełk
95.	Dolina Błędzianki	Landscape Reserve	State protected	33,68	Ełk, Suwałki
96.	Dolina Narwi	Landscape Reserve	State protected	430,34	Ełk, Suwałki
97.	Dolina Rospudy	Landscape Reserve	State protected	236,59	Suwałki
98.	Doliny Legi	Landscape Reserve	State protected	84,81	Ełk
99.	Doliny Rzeki Guber	Landscape Reserve	State protected	144,30	Ełk
100.	Gawlik	Landscape Reserve	State protected	9,10	Ełk, Suwałki
101.	Grabowo	Landscape Reserve	State protected	37,30	Ełk, Suwałki
102.	Jezior Oleckich	Landscape Reserve	State protected	105,22	Ełk
103.	Jezior Orzyskich	Landscape Reserve	State protected	212,73	Ełk, Suwałki

Nr	Name	Protected area type	Type	Area, km ²	Subcounty
104.	Jeziro Rajgrodzkich	Landscape Reserve	State protected	74,05	Ełk
105.	Jezióra Oświn	Landscape Reserve	State protected	152,40	Ełk
106.	Kłós	Landscape Reserve	State protected	22,17	Ełk, Suwałki
107.	Krainy Wielkich Jezior Mazurskich	Landscape Reserve	State protected	859,71	Ełk
108.	Krzyżany	Landscape Reserve	State protected	27,49	Białystok
109.	Obszar Chronionego Krajobrazu Doliny Błędzianki	Landscape Reserve	State protected	59,77	Ełk
110.	Obszar Chronionego Krajobrazu Doliny Gołdapy I Węgorapy	Landscape Reserve	State protected	306,20	Ełk
111.	Obszar Chronionego Krajobrazu Pojezierza Etckiego	Landscape Reserve	State protected	494,15	Białystok
112.	Otuliny Mazurskiego Parku Krajobrazowego - Kierwik	Landscape Reserve	State protected	2,46	Suwałki
113.	Otuliny Mazurskiego Parku Krajobrazowego - Ruciane-Nida	Landscape Reserve	State protected	16,53	Białystok
114.	Otuliny Mazurskiego Parku Krajobrazowego - Szeroki Bór	Landscape Reserve	State protected	6,81	Suwałki
115.	Otuliny Mazurskiego Parku Krajobrazowego - Wschód	Landscape Reserve	State protected	92,15	Białystok
116.	Pojezierze Północnej Suwalszczyzny	Landscape Reserve	State protected	426,43	Białystok, Suwałki
117.	Pojezierze Rajgrodzkie	Landscape Reserve	State protected	148,97	Ełk
118.	Pojezierze Sejneńskie	Landscape Reserve	State protected	358,86	Ełk
119.	Puszcza I Jeziora Augustowskie	Landscape Reserve	State protected	694,01	Ełk
120.	Puszczy Boreckiej	Landscape Reserve	State protected	229,31	Ełk
121.	Puszczy I Jezior Piskich	Landscape Reserve	State protected	430,06	Suwałki
122.	Puszczy Rominckiej	Landscape Reserve	State protected	76,58	Suwałki
123.	Równiny Kurpiowskiej I Doliny Dolnej Narwi	Landscape Reserve	State protected	488,88	Ełk
124.	Spychowski	Landscape Reserve	State protected	121,75	Suwałki
125.	Wysoczyzna Krzywińskich	Landscape Reserve	State protected	6,14	Ełk
126.	Wzgórz Dybowskich	Landscape Reserve	State protected	108,62	Białystok
127.	Wzgórz Szeskich	Landscape Reserve	State protected	124,49	Ełk
128.	Wzgórz Sokólskie	Landscape Reserve	State protected	382,83	Ełk
129.	Biebrzanski National Park (Biebrzanski Park Narodowy)	Ramsar area, wetland of international importance	Of International Importance	652,38	Suwałki
130.	Lake of Seven Islands Nature Reserve (Rezerwat przyrody "Jezioro Siedmiu Wysp")	Ramsar area, wetland of international importance	Of International Importance	19,72	Suwałki
131.	Narew River National Park	Ramsar area, wetland of international importance	Of International Importance	122,50	Ełk
132.	Wigry National Park	Ramsar area, wetland of international importance	Of International Importance	136,62	Ełk
133.	Dolina Biebrzy	SACs	Natura 2000	1209,51	Suwałki
134.	Dolina Górnej Rospudy	SACs	Natura 2000	40,62	Ełk
135.	Dolina Pisy	SACs	Natura 2000	32,19	Ełk
136.	Dolina Szeszupy	SACs	Natura 2000	16,97	Suwałki
137.	Jeleniewo	SACs	Natura 2000	58,96	Suwałki
138.	Jezioro Woszczelskie	SACs	Natura 2000	3,13	Ełk
139.	Mamerki	SACs	Natura 2000	1,62	Suwałki
140.	Mazurskie Bagna	SACs	Natura 2000	15,67	Suwałki
141.	Mokradła Kolneńskie i Kurpiowskie	SACs	Natura 2000	14,45	Suwałki

Nr	Name	Protected area type	Type	Area, km ²	Subcounty
142.	Murawy na Pojezierzu Ełckim	SACs	Natura 2000	0,77	Białystok, Suwałki
143.	Murawy na Poligonie Orzysz	SACs	Natura 2000	12,96	Białystok, Suwałki
144.	Narwiańskie Bagna	SACs	Natura 2000	68,17	Białystok
145.	Niecka Skaliska	SACs	Natura 2000	113,67	Ełk
146.	Ostoja Augustowska	SACs	Natura 2000	1067,96	Białystok, Suwałki
147.	Ostoja Borecka	SACs	Natura 2000	252,97	Białystok
148.	Ostoja Knyszyńska	SACs	Natura 2000	1357,21	Białystok
149.	Ostoja nad Oświnem	SACs	Natura 2000	33,52	Ełk
150.	Ostoja Narwiańska	SACs	Natura 2000	185,75	Ełk
151.	Ostoja Piska	SACs	Natura 2000	577,56	Suwałki
152.	Ostoja Północnomazurska	SACs	Natura 2000	145,52	Białystok
153.	Ostoja Suwalska	SACs	Natura 2000	63,35	Ełk
154.	Ostoja w Dolinie Górnej Narwi	SACs	Natura 2000	190,43	Ełk
155.	Ostoja Wigierska	SACs	Natura 2000	160,33	Suwałki
156.	Pojezierze Sejneńskie	SACs	Natura 2000	135,95	Białystok
157.	Puszcza Romincka	SACs	Natura 2000	147,24	Białystok
158.	Torfowiska Gór Sudawskich	SACs	Natura 2000	0,98	Białystok
159.	Torfowisko Zocie	SACs	Natura 2000	0,66	Suwałki
160.	Źródlika Wzgórz Sokólskich	SACs	Natura 2000	0,49	Białystok
161.	Bagienna Dolina Narwi	SPAs	Natura 2000	234,21	Suwałki
162.	Bagna Nietlickie	SPAs	Natura 2000	40,75	Białystok
163.	Bagno Wizna	SPAs	Natura 2000	144,45	Ełk
164.	Dolina Górnej Narwi	SPAs	Natura 2000	183,39	Białystok
165.	Jezioro Dobskie	SPAs	Natura 2000	69,76	Białystok
166.	Jezioro Oświn i okolice	SPAs	Natura 2000	25,13	Suwałki
167.	Lasy Skaliskie	SPAs	Natura 2000	126,24	Białystok, Suwałki
168.	Ostoja Biebrzańska	SPAs	Natura 2000	1481,94	Białystok
169.	Ostoja Poligon Orzysz	SPAs	Natura 2000	211,74	Ełk
170.	Ostoja Warmińska	SPAs	Natura 2000	1451,88	Suwałki
171.	Puszcza Augustowska	SPAs	Natura 2000	1340,38	Ełk
172.	Puszcza Borecka	SPAs	Natura 2000	189,30	Białystok
173.	Puszcza Knyszyńska	SPAs	Natura 2000	1392,17	Suwałki
174.	Puszcza Piska	SPAs	Natura 2000	1725,85	Ełk

Annex 3. Conclusions of SEA Entities, Consultations



The Ministry of Environment of the Republic of Lithuania

Budgetary institution, A. Jankūto str. 4, LT-01106 Vilnius, tel. 8 706 83881, fax. 8 706 83883, email. info@am.lt, http://am.lrv.lt

Smart Continent
lt@smartcontinent.com

2021-11-

No. (10)-D8(E)-

ON THE APPLICATION OF THE STRATEGIC ENVIRONMENTAL ASSESSMENT PROCEDURES FOR THE PROGRAMME

Having examined letter No 21-AJ/11-4 dated 12.11.2021, please be informed that in accordance with the laws in force and the Regulations of the Ministry of the Environment, approved by the Resolution of the Government of the Republic of Lithuania No 1138 dated 22.9.1998 „On approval of the Regulations of the Ministry of the Environment of the Republic of Lithuania“, the competence of the Ministry of the Environment does not include *the official interpretation of laws, regulations and their application or the examination of a specific factual situation*. In this context, we are providing the opinion of the Ministry of the Environment specialists on the issue at hand.

The letter asks for the Ministry's opinion whether, in accordance with the Resolution of the Government of the Republic of Lithuania No. 967 of 18 August 2004 "On the Approval of the Description of the Procedure for the Strategic Environmental Impact Assessment of Plans and Programmes" (hereinafter referred to as "GRL Resolution No. 967"), 2021-2027 Lithuania-Poland Cross-border Cooperation Programme (hereinafter referred to as the "the Programme") is subject to the SEA procedures.

It should be noted that point 10.4 of the Description of the Procedure for Strategic Environmental Impact Assessment of Plans and Programmes, approved by GRL Resolution No.967 (SEA description), stipulates that "in the case of the preparation of any other plan or programme, which establishes the framework for the development of economic activities, the implementation of which, according to the procedure laid down by legislation, will have to be coordinated with the authority responsible for environmental protection", a SEA screening procedure shall be carried out.

Having examined the objectives of the Programme and the activities to be financed, we note that the activities "adaptation of protected areas for sustainable tourism and education" foreseen in the Programme may be implemented in Natura 2000 sites or in areas close to Natura 2000, where the implementation of projects would need to be co-ordinated with the regional park directorates.

Based on the above considerations, we consider that the Programme is subject to the SEA screening procedures in accordance with point 10.4 of the SEA description.

Vice-minister for the Environment

Raminta Radavičienė

R. Griškevičienė, tel. +370 695 11585, email rasa.griskeviciene@am.lt

**THE MINISTRY OF ENVIRONMENT OF THE REPUBLIC OF LITHUANIA**

Budgetary institution, A. Jakšto str. 4, LT-01105 Vilnius, tel. 8 706 63661, fax. 8 706 63663, email. info@am.lt, http://am.lrv.l

Smart Continent LT
lt@smartcontinent.com

2022-01- Nr. (10)-D8(E)-
to Nr.

ON THE SELECTION DOCUMENT OF THE LITHUANIAN-POLISH CROSS-BORDER COOPERATION PROGRAMME FOR 2021-2027 INTERREG VI

After examining the selection document for the Strategic Environmental Assessment of the Interreg VI-A Lithuanian-Polish Cross-Border Cooperation Programme for 2021-2027, we have no comments or suggestions.

Deputy Minister for the Environment

Raminta Radavičienė

R. Griškevičienė, tel.: +370 695 11585, Email: rasa.griskeviciene@am.lt

**MINISTRY OF CULTURE OF THE REPUBLIC OF LITHUANIA**

Budgetary institution, J. Basanavičiaus str. 5, LT-01118 Vilnius, tel. +370 (5) 219 3400, fax. +370 (5) 271 8551, email. dmm@lrkm.lt, <https://lrkm.lrv.lt/lt/>

UAB Smart Continent LT

2021-12- Nr. S2-
to 2021-12-17 Nr. 2021 AJ-12/10

ON THE STRATEGIC ASSESSMENT OF THE ENVIRONMENTAL IMPACT OF THE PROGRAMME

The Ministry of Culture reviewed the 2021-2027 Interreg VI-A Lithuanian-Polish Cross-Border Cooperation Programme Strategic Environmental Assessment Selection Document and informs that, in the opinion of the Ministry of Culture, it is not necessary to carry out a strategic environmental assessment of this programme in terms of cultural heritage.

Deputy Minister of Culture

Rimantas Mikaitis

Gintaras Džiovenas, tel.: 860846011, Email: Gintaras.Dziovenas@lrkm.lt

**MINISTRY OF HEALTH OF THE REPUBLIC OF LITHUANIA**

ISmart Continent LT
lt@smartcontinent.com

2021-12- Nr. (10.2.1.2Mr-411)10-
to 2021-12-17 Nr. 2021-AJ-12/11

**ON THE SUBMISSION OF THE STRATEGIC ENVIRONMENTAL IMPACT
ASSESSMENT SELECTION DOCUMENT**

The Ministry of Health of the Republic of Lithuania, having reviewed the 2021-2027 Interreg VI-A Lithuanian-Polish Cross-Border Cooperation Programme Strategic Environmental Assessment Selection Document, informs that there are no comments or suggestions to the document.

Deputy Minister of Health

Aušra Bilotienė Motiejūnienė

D. Žukienė, tel.: (8 5) 205 5293, Email: dalia.zukiene@sam.lt



STATE SERVICE FOR PROTECTED AREAS UNDER THE MINISTRY OF ENVIRONMENT

Budgetary institution, Antakalnio str. 25, LT-10312 Vilnius, tel. (8 5) 272 3284, vstt@vstt.lt, <http://vstt.lrv.lt>.

Smart Continent LT
lt@smartcontinent.com

2022-01- Nr.
to 2021-12-17 Nr.2021-AJ-12/12

ON THE SELECTION DOCUMENT FOR THE STRATEGIC ENVIRONMENTAL ASSESSMENT PROGRAMME 2021-2027 OF THE INTERREG VI-A LITHUANIAN-POLISH CROSS-BORDER COOPERATION

The State Service for Protected Areas under the Ministry of Environment, in accordance with the competence as well as the aspects of "Natura 2000" and the national protected areas together with the natural values protected in such areas, examined Strategic Environmental Assessment of the Interreg VI-A Lithuanian-Polish Cross-Border Cooperation Programme for 2021-2027 (hereinafter - the Programme) document.

The programme includes three priorities:

- 1) Promoting environmental well-being. Purpose: 1.1. Strengthen the protection and conservation of nature, biodiversity and green infrastructure, including in urban areas, and reduce all forms of pollution;
- 2) Promoting physical, emotional and cultural well-being. Purpose: 2.1. Ensure equal access to health care by increasing the resilience of health care systems, including primary health care, and promote the transition from institutional to family and community-based care; 2.2. Strengthen the role of culture and sustainable tourism in the fields of economic development, social inclusion and social innovation;
- 3) Strengthening cooperation between local stakeholders. Purpose: 3.1. strengthening mutual trust, in particular by promoting people-to-people contacts; 3.2. Other actions in support of better governance of cooperation.

In view of this, the Programme does not cover large-scale infrastructure or other projects that are foreseen in Annexes 1 and 2 of the Law on Environmental Impact Assessment of the Proposed Economic Activity of the Republic of Lithuania and may have an impact on the environment. Objective 1.1 activities - joint actions and cooperation in the field of environmental education and training, exchange of experience, cooperation and joint actions to identify and strengthen functional links and / or areas related with environmental protection and nature conservation in the territories of the Programme and their immediate vicinity increasing the positive environmental impact in the border area – may have an indirect positive impact on biodiversity. Adapting protected areas to sustainable tourism and education will promote the sustainable use of natural resources and ecosystem services. Restrictions on economic activities and conditions for the performance of activities have been established in the most environmentally sensitive areas – protected areas and Natura 2000 areas within their scope. We conclude that the implementation of

2

the Programme would not have significant negative consequences for protected species and natural habitats, national protected areas or natural values in Natura 2000 sites and that a strategic environmental impact assessment of the Programme is not required in this regard.

Director

Albertas Stanislovaitis

R. Uzdras, tel.: 8 659 63415, Email: remigijus.uzdras@vstt.lt

Summary of the results of consultations
of Interreg VI-A Lithuania – Poland Cross-border Cooperation Programme 2021-2027
during the Strategic Environmental Impact Assessment screening

No.	Name and address of consulted institution	Conclusion	Assessment of conclusion
1.	Ministry of Culture of the Republic of Lithuania, J.Basanavičiaus str. 5, LT-01118 Vilnius, Lithuania	In the letter of 3 January 2022 No. S2, the Ministry informed that strategic environmental impact assessment in terms of the impact on protection of cultural heritage is not necessary.	-
2.	Ministry of Health of the Republic of Lithuania, Vilniaus str. 33, LT-01506 Vilnius, Lithuania	In the letter of 27 December 2021 No. (10.2.1.2Mr-411)10, the Ministry informed that there were no comments or suggestions to the submitted screening document.	-
3.	Ministry of Environment of the Republic of Lithuania, A. Jakšto str. 4, LT-01105 Vilnius, Lithuania	In the letter of 7 January 2022 No. (10)-D8(E)-121, the Ministry informed that there were no comments or suggestions to the submitted screening document.	-
4.	State Service for Protected Areas under the Ministry of Environment, Antakalnio str. 25, LT-10312 Vilnius, Lithuania	In the letter of 19 January 2022 No. (4)-V3-64, the institution concluded that the implementation of the Programme will not have negative significant impact on protected species and habitats in Natura 2000 territories, national protected areas or natural values. Therefore, the strategic environmental impact assessment is not required.	-

Organizer preparing a plan or program _____

(name, surname, position, signature, date)