

Copernicus Programme for geo-literacy improvement

Maria Andrzejewska

Elżbieta Wołoszyńska-Wiśniewska

UNEP/GRID-Warsaw Centre

Geo-Literacy

LITERACY is about communication
GEO-literacy – a new term for
a long-standing idea consisting
of three components:

interactions, interconnections and implications.

GEO-literacy – the ability to **take** geographical information, such as satellite imagery, maps or Copernicus services, **critically analyze** and **make meaning** of it and then **base decisions on** the newly formed knowledge, to make the best decisions possible about our environment, resources and populace.

Source: Copernicus Programme, www.copernicus.eu

Copernicus - the road to economic development

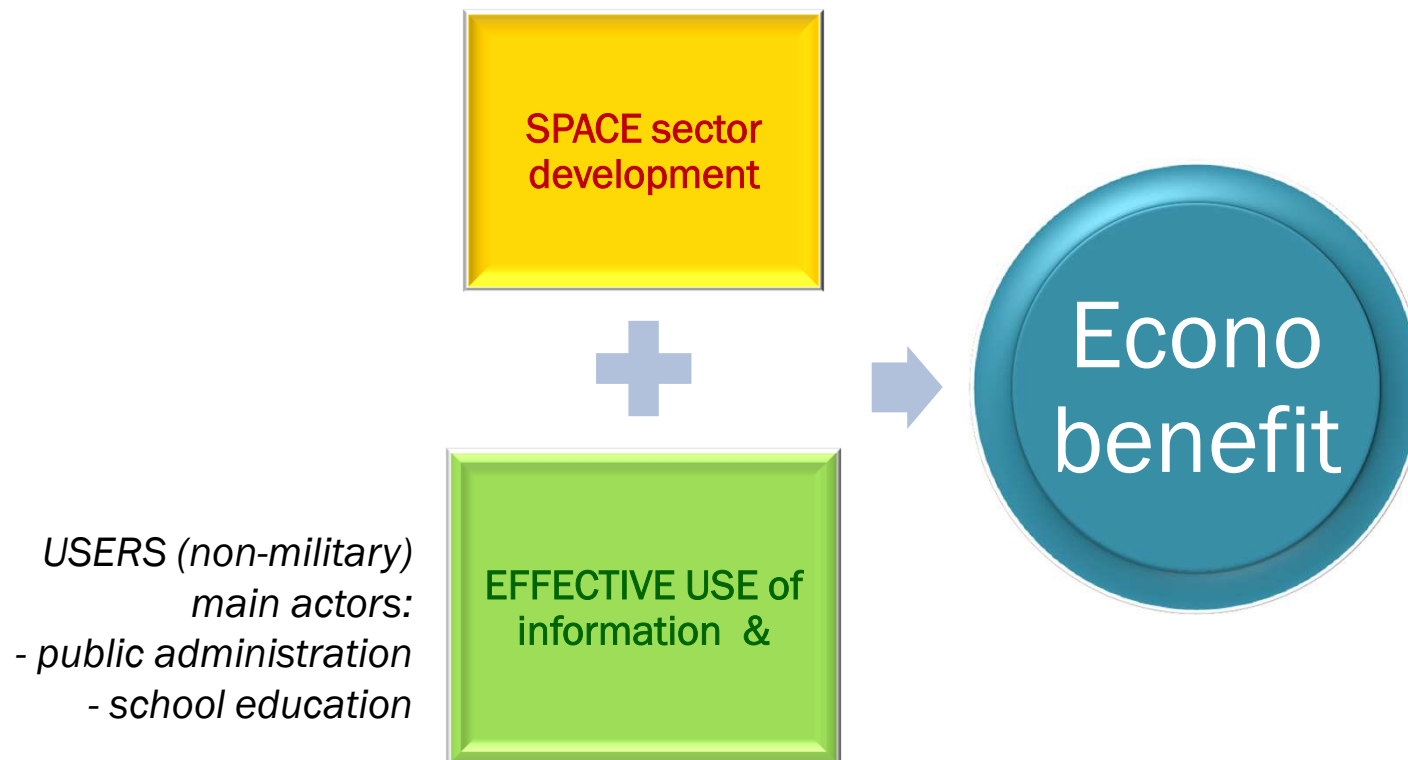
- Copernicus - a European system for monitoring the Earth.
- Offers commercial and public policy application

The objective is to optimize and coordinate the use of multiple-source data to get a timely and quality information, services and knowledge, and to provide autonomous and independent access to information, particularly in relation to environment and security.



- **Economic development respecting the sustainable development rules**

COPERNICUS & Geo-literacy



UNEP/GRID-Warsaw Centre mission

fostering use of geoinformation and remote sensing in:

- environmental management,
- biodiversity protection,
- climate change mitigation,
- capacity building and environmental education.

UNEP/GRID-Warsaw Centre

Partnerships and Memberships

- Member of the UN System as the Polish node of the UNEP-initiated GRID (Global Resource Information Database) network
- RCO Mazovia – recommended by the Marshall
- Member of European Citizen Science Association (ECSA)
- National Centre of Excellence, digital-earth.eu network
- Member of the Geographical Information Systems International Group (GISIG)
- Supporting member of the Polish Association for the Spatial Information (PASI)
- Member of the ICA/ Open Source Geospatial Foundation (ICA OSGeo) Labs
- GLOBE Program – national coordinator
- Member of the Partnership for Climate initiative in Poland
- Partnership with the Employers of Poland organization

UNEP/GRID-Warsaw Centre

Partnerships and Memberships

- Member of the UN System as the Polish node of the UNEP-initiated GRID (Global Resource Information Database) network
- **RCO Mazovia – recommended by the Marshall**
- Member of European Citizen Science Association (ECSA)
- **National Centre of Excellence, digital-earth.eu network**
- Member of the Geographical Information Systems International Group (GISIG)
- Supporting member of the Polish Association for the Spatial Information (PASI)
- **Member of the ICA/ Open Source Geospatial Foundation (ICA OSGeo) Labs**
- **GLOBE Program – national coordinator**
- Member of the Partnership for Climate initiative in Poland
- **Partnership with the Employers of Poland organization**

UNEP/GRID-Warsaw Centre

Selected activities

- **ESA's Geospatial Services** for environmental management in Poland, 2012-2014 (ESA - PECS: Plan for European Cooperating States)
- **EEA environmental assessments** – involvement and contribution
- **GLOBE** (Global Learning and Observations to Benefit the Environment) Program
- **CASCADOSS** Development of a transnational cascade training programme on Open Source GIS&RS software for environmental applications, 2007-2009 (EU's 6th Framework Programme)

UNEP/GRID-Warsaw Centre

Selected activities

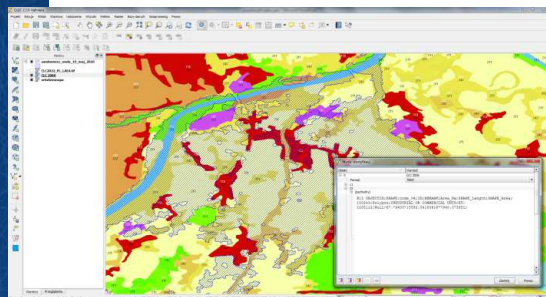
- **ESA's Geospatial Services** for environmental management in Poland, 2012-2014 (ESA - PECS: Plan for European Cooperating States)
- EEA environmental assessments – involvement and contribution
- **GLOBE** (Global Learning and Observations to Benefit the Environment) Program
- **CASCADOSS** Development of a transnational cascade training programme on Open Source GIS&RS software for environmental applications, 2007-2009 (EU's 6th Framework Programme)

Public administration

ESA's Geospatial Services for environmental management in Poland (2012-2014)



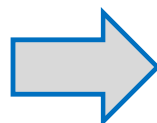
Partner:



Selected services and
geospatial products

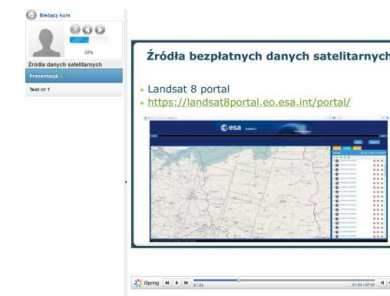


Dedicated system
(geoportal & mobile app.)

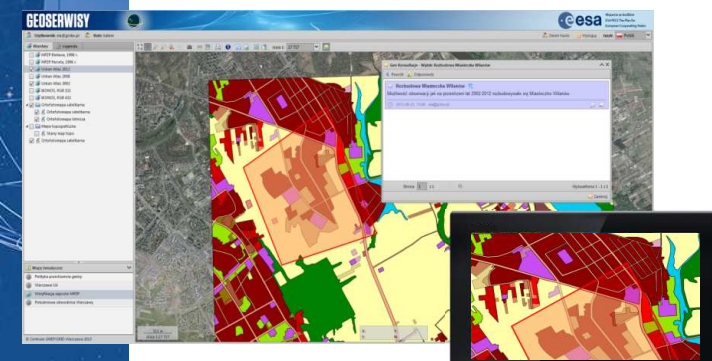


specific case-studies (scenarios)
related to environmental
management, spatial planning
and crisis management issues,
for example:

- Monitoring of urban areas development
- Monitoring of local spatial planning policy
- Mapping changes of selected non-forest habitats within Natura 2000 sites
- Flooded areas mapping in selected areas of Poland



Online training on remote sensing and Copernicus Programme services
<http://e-platforma.gridw.pl>



Scenario: Monitoring of urban areas development

GEOSERWISY



Wsparcie ze środków
ESA PECS The Plan for
European Cooperating States

Użytkownik: ela@gridw.pl

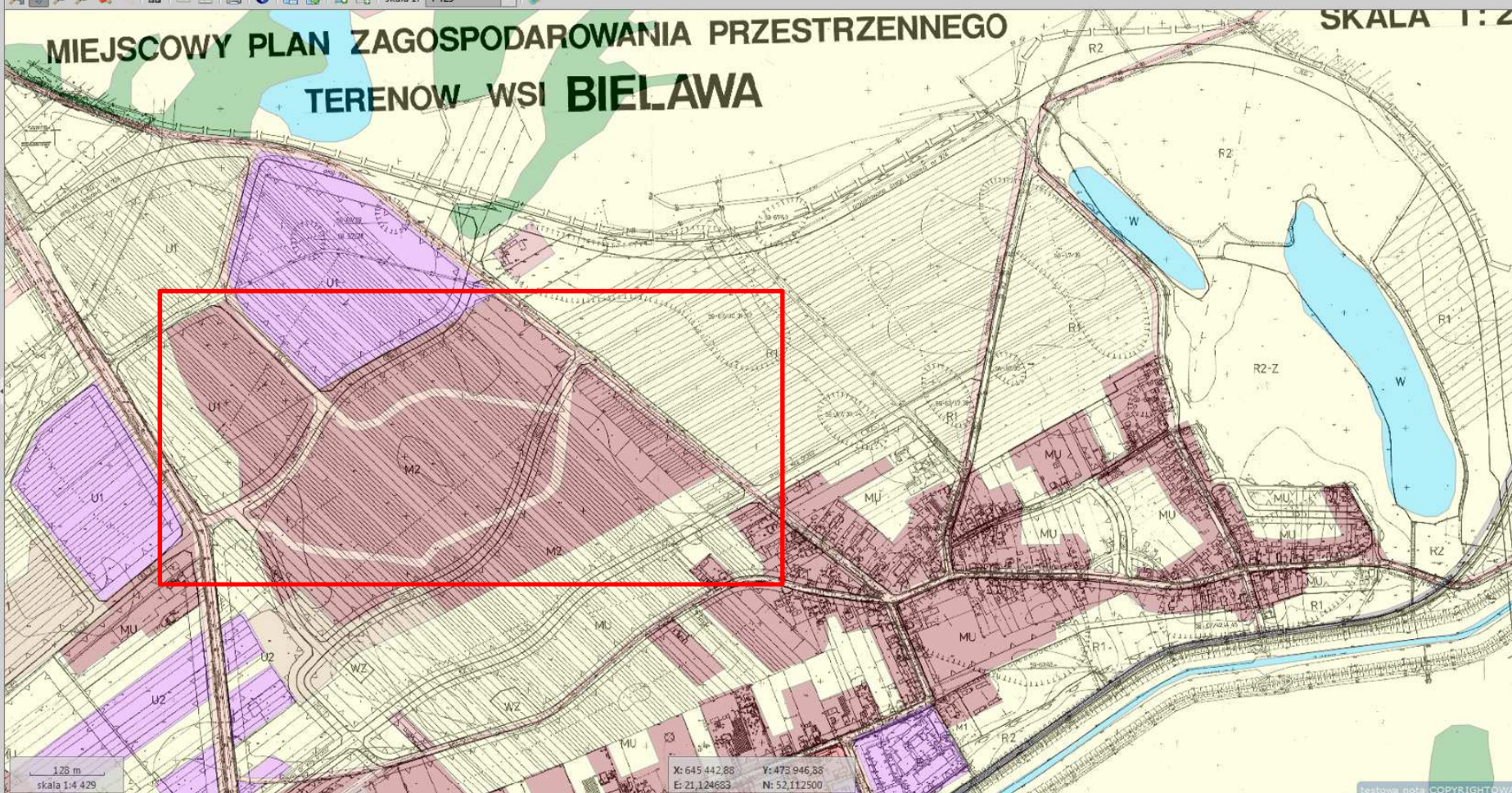
Role: Admin

Zmień hasło

Wyloguj

Język: Polski

- Warstwy
- MPZP Bielawa, 1998 r.
 - MPZP Parcela, 1996 r.
 - Urban Atlas 2012
 - Urban Atlas 2008
 - Urban Atlas 2002
 - IKONOS, RGB 321
 - IKONOS, RGB 432
 - Ortofotomapa satelitarna
 - Ortofotomapa satelitarna
 - Ortofotomapa lotnicza
 - Mapa topograficzna
 - Skany map topo
 - Ortofotomapa satelitarna



Użytkownik: ela@gridv.pl Rola: Admin Wyloguj Język: Polski

Zmień hasło Wymiary skala 1: 8 858

MIEJSOWY PLAN ZAGOSPODAROWANIA PRZESTRZENNEGO TERENÓW WSI BIELAWA

MPZP Bielawa, 1998 r.
MPZP Parcela, 1996 r.
Urban Atlas 2012
Urban Atlas 2008
Urban Atlas 2002
IKONOS, RGB 321
IKONOS, RGB 432
Ortofotomapa satelitarna
Ortofotomapa satelitarna
Ortofotomapa lotnicza
Mapa topograficzna

Mapy tematyczne
Polityka przestrzenna gminy
Warszawa UA
Weryfikacja zapisów MPZP
Południowa obwodnica Warsz...

© Centrum UNEP/GRID-Warszawa 2013

Zmień hasło Wyloguj Język: Polski

skala 1: 8 858


256 m
skala 1:8 858

X: 644 959,28 Y: 473 693,24
E: 21,117515 N: 52,110348


Mapy tematyczne
Polityka przestrzenna gminy
Warszawa UA
Weryfikacja zapisów MPZP
Południowa obwodnica Warsz...

© Centrum UNEP/GRID-Warszawa 2013

Wspieranie przez fundusze
ESA, PECS The Plan for
European Cooperating States



Zmieni hasło Wyloguj Język: PL Polski



Użytkownik: eia@gridwv.pl Role: Admin

skala 1: 4 429

120 m
skala 1:4 429

GEOSERWISY

Warstwy

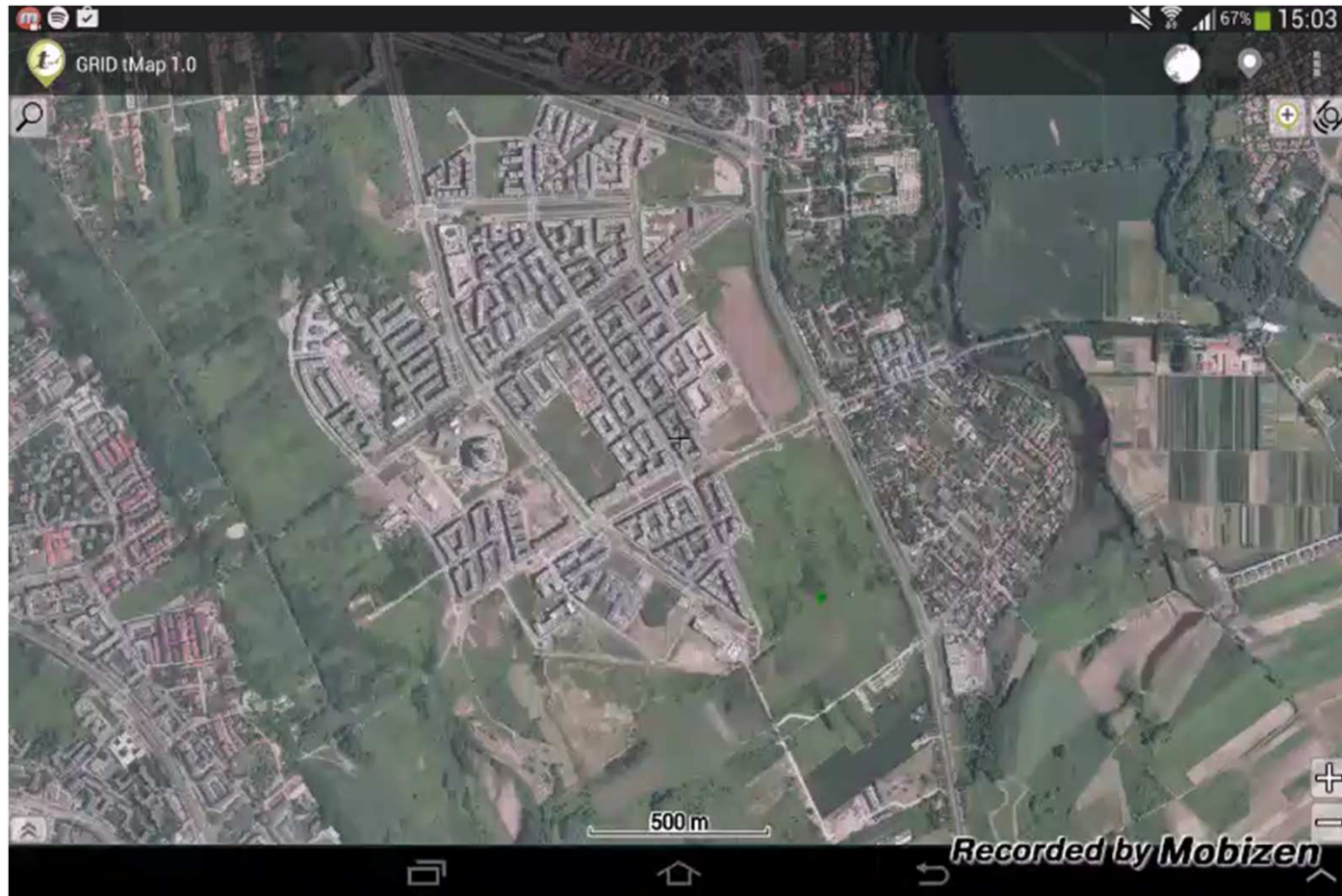
- Legendza
- MPZP Biaława, 1998 r.
- MPZP Parcela, 1996 r.
- Urban Atlas 2012
- Urban Atlas 2008
- Urban Atlas 2002
- IKONOS, RGB 321
- IKONOS, RGB 432
- Ortofotomapa satelitarna
- Ortofotomapa satelitarna
- Mapa topograficzna
- Skany mapi topo
- Ortofotomapa satelitarna

Mapy tematyczne

- Polityka przestrzenna gminy
- EFA STAT
- Weryfikacja zapisów MPZP
- Zmienność warunków środow...
- Copernicus
- Geoland2
- Prezja antropogeniczna (Kamp...

© Centrum UNEP-GRID-Warszawa 2013

Scenario: Mapping changes of high value habitats (within Natura 2000 sites)

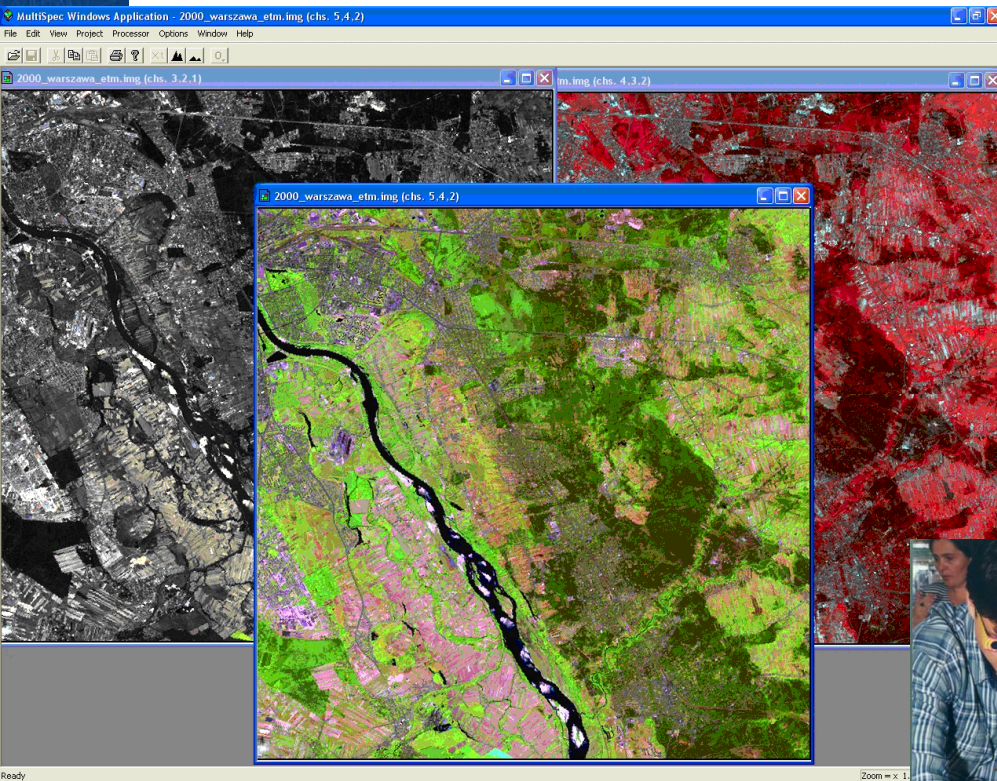


School education



- **GLOBE program** (The Global Learning and Observations to Benefit the Environment)
 - Land cover identification in the area around the school with the use of MUC classification system;
 - Land cover changes in the past 25 years;
 - Climate from space – remotely sensed data for climate analysis.

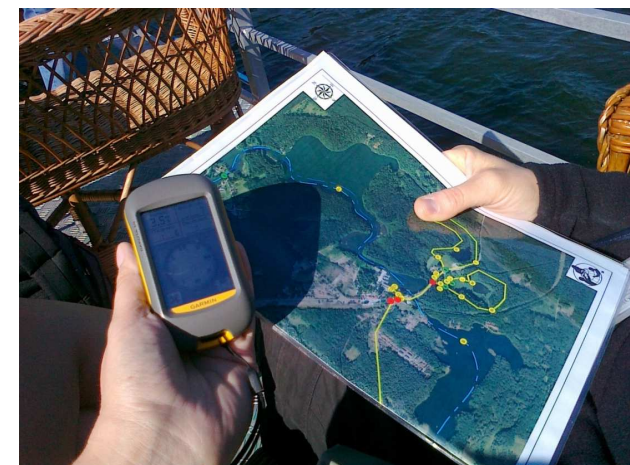
Land cover changes



Methodology:

- visual interpretation and manual mapping
- computer processing for more advanced participants
- land cover change analysis

*Potential to use **Sentinel data (Sentinel-2)** to assess land cover and land cover changes.*



Areas for cooperation

- Support to local administration (communes level): **spatial planning and environmental management** with the sound use of information delivered from HR satellite images
- **Protected areas/N2000 - effective environmental management:**
 - identification and monitoring of selected habitats,
 - Land cover/land use changes
- **Geoeducation for sustainable development**
- Development and implementation of geoportal and mobile applications
- Capability building activities: trainings, workshop, seminars, course (online and face-to-face)

UNEP/GRID-Warsaw Centre contact details

8 Sobieszyńska Str.

00-764 Warsaw

Phone +48 22 840 66 64

Fax: +48 22 851 62 01

<http://www.gridw.pl>

Maria Andrzejewska maria@gridw.pl

Elżbieta Wołoszyńska-Wiśniewska ela@gridw.pl

