

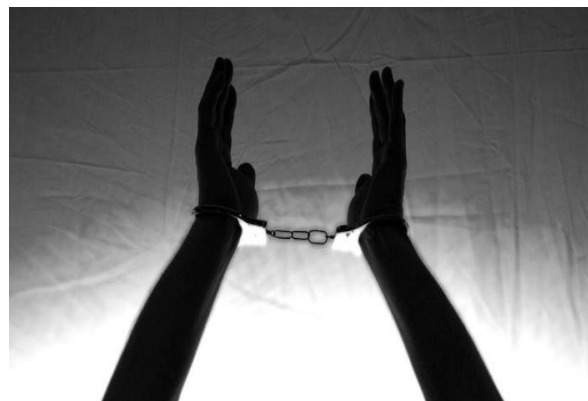


15th conference
NATIONAL MIGRATION NETWORK

in Warsaw

3rd-4th June 2019

Ministry of the Interior and Administration



***“COOPERATION WITH THIRD
COUNTRIES IN THE FIGHT AGAINST
SMUGGLING AND TRAFFICKING IN
HUMAN BEINGS”***





CONFERENCE VENUE

Ministry of the Interior and Administration (Polish name: Ministerstwo Spraw Wewnętrznych i Administracji)

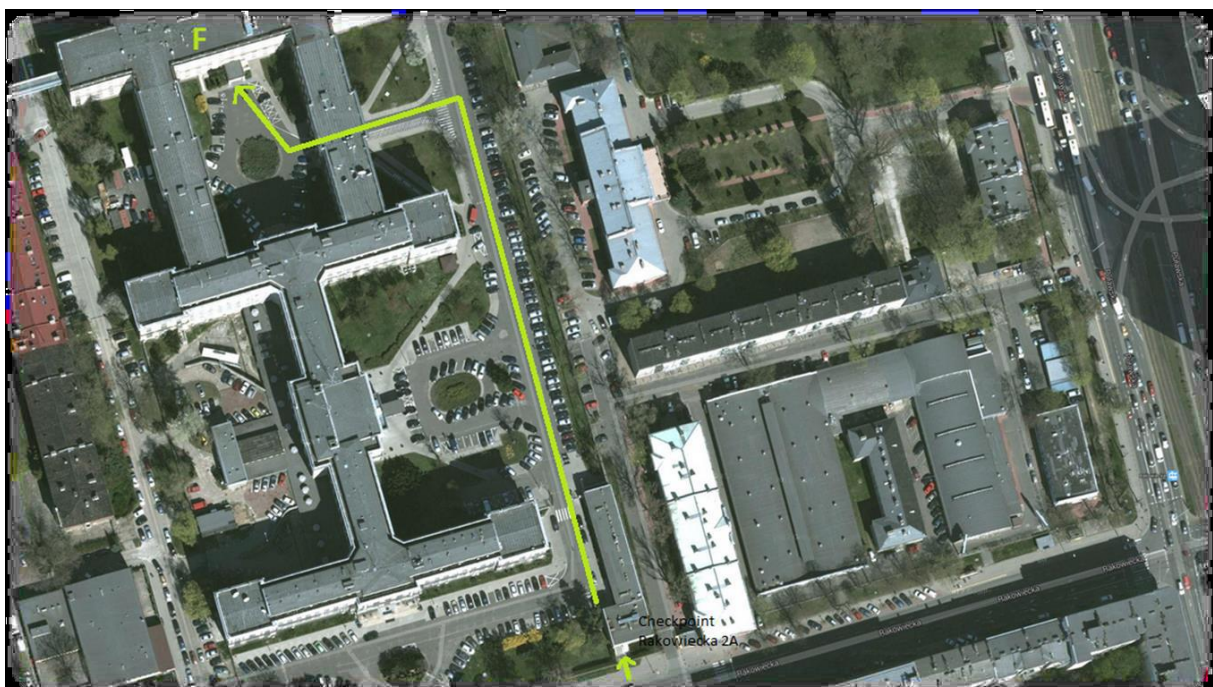
Address: 5 Batorego Street, 02-591 Warsaw

Entrance: 2A Rakowiecka Street



Once you pass the checkpoint located on RAKOWIECKA 2A Street go straight ahead. Turn left on the second crossroad. On the small roundabout surrounded by the buildings, turn right and enter the F building. Once inside, prepare your ID for the security check. Take your left and take the elevator to the fourth floor.

We advise you to arrive to the venue earlier as there are long safety procedures at the Ministry.





ACCOMMODATION

Hotel Novotel

Address: Marszałkowska 94/98, 00-510 Warsaw

Phone: (+48) 22 596 00 00

www: <http://www.novotel.com/pl/home/index.shtml>

Hotel Polonia

Address: Al. Jerozolimskie 45, 00-692 Warsaw

Phone: (+48) 22 318 28 00

www: <http://www.poloniapalace.com/default-en.html>

Hotel Metropol

Address: Marszałkowska 99a, 00-693 Warsaw

Phone: (+48) 22 325 31 00

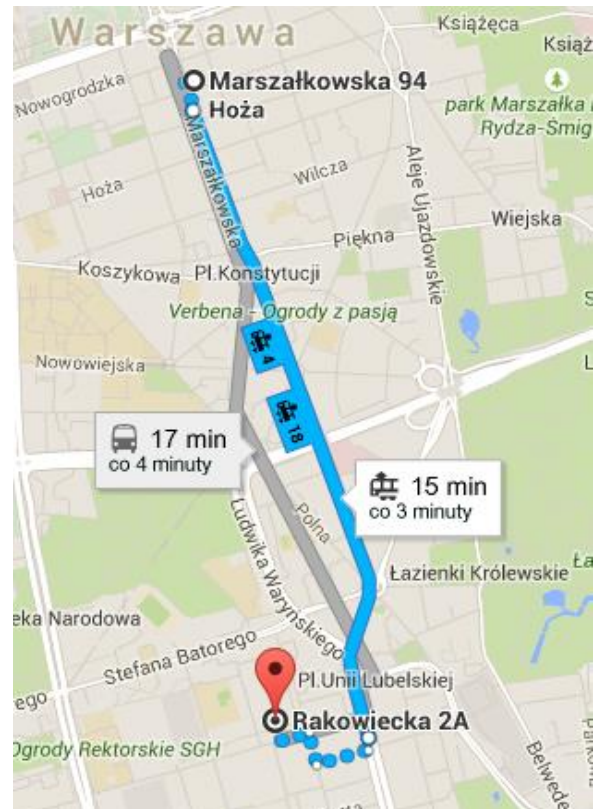
www: <http://www.hotelmetropol.com.pl/default-en.html>

ARRIVAL FROM THE AIRPORT TO THE NOVOTEL HOTEL:

- **Public transport:** travel duration - approx. 32 min:
 - bus no. **175** (18 stops, get off at *Centrum* stop) + walk for 130 m,
 - suburban train **S2** (7 stations), station Warszawa Śródmieście + 460 meters walk
- **Taxi:** approx. – 10 km, travel duration approx. 20 min, price – approx. 38 PLN (9 EUR)

ARRIVAL FROM THE NOVOTEL HOTEL TO THE PREMISES OF THE MINISTRY:

- **Public transport** – time duration – 20 minutes
 - tram no. 4, 18, 35 (5 stops), get off at *Rakowiecka* stop → walk for 310 m
 - bus no. 131, 501, 519, 522 (5 stops), get off at *Plac Unii Lubelskiej* stop → walk for 360 m
- **Taxi:** distance – approx. 3 km, travel duration approx. 15 min, price – approx. 20 PLN (5 EUR)



For more information on directions, please visit: <http://warszawa.jakdojade.pl>



Projekt współfinansowany ze środków Unii Europejskiej w ramach Funduszu Azylu, Migracji i Integracji



TRANSPORTATION

TYPE OF TICKETS AND FARES:

- **20-minute ticket** – 3.40 PLN (approx. 0.8 EUR)
- **75-minute ticket** – 4.40 PLN (approx. 1.1 EUR)
- **Single-day ticket** – 15 PLN (3.5 EUR)

RECOMMENDED TAXI SERVICE:

- **EKO Taxi:** +48 22 644-22-22, <http://ekocabtaxi.pl/>
- **Glob Taxi:** +48 666 009 668, <http://www.globcabtaxi.pl/>
- **Grosik Taxi:** +48 22 646 46 46, <http://www.grosiktaxi.pl/>



OFFICIAL DINNER

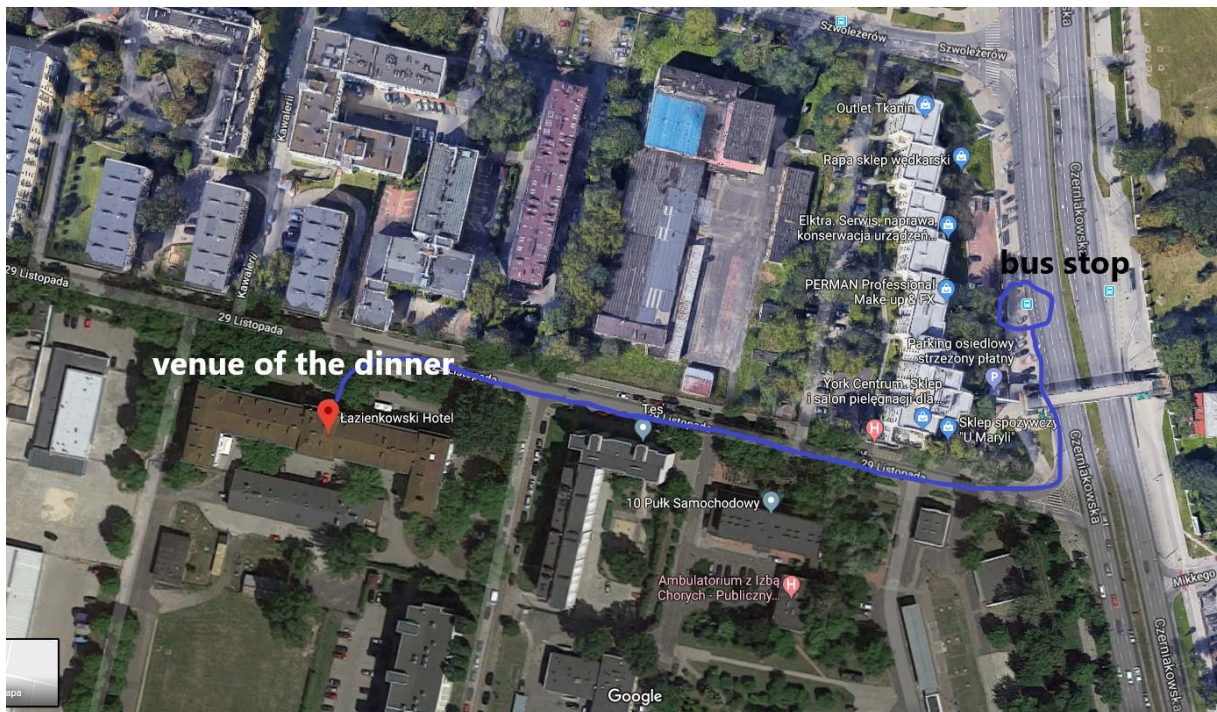
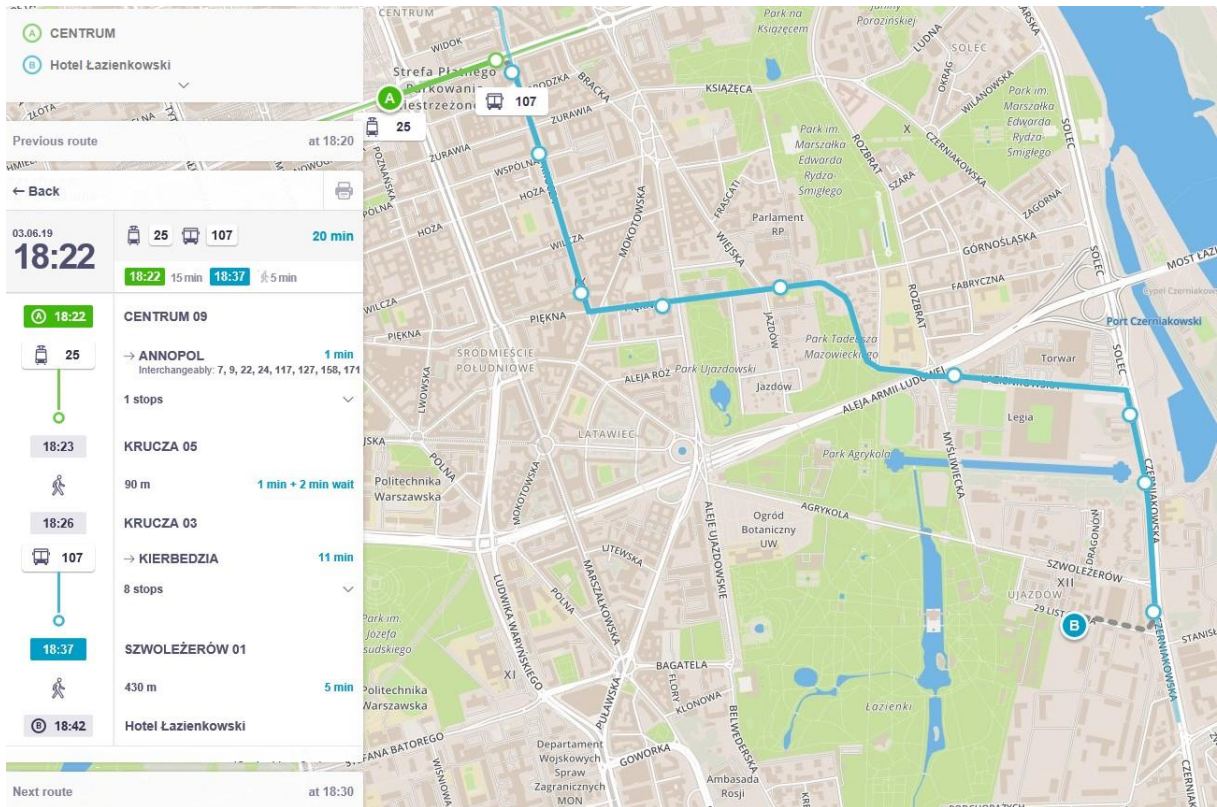
The official dinner starts at 19⁰⁰ on 3rd June (1st day of the Conference). It takes place in Łazienkowski Hotel on 29 listopada 3b street.

ARRIVAL FROM THE CENTRUM STOP TO THE DINNER VENUE:

- **Public transport:** travel duration – approx. 30 minutes:
 - From *Centrum 09* stop (1 stop) trams no. **7, 9, 22, 24, 25** get off at *Krucza 05* stop + walk for 90 meters
 - Get on at *Krucza 03* stop – bus nr 107 (8 stops), get off at *Szwolężerów 01* stop
 - Walk for 430 metres to Hotel Łazienkowski (29 listopada 3b st)
- **Taxi:** approx. – 3,4 km, travel duration approx. 10 minutes, price - approx. 15 PLN (3,5 EUR)



Projekt współfinansowany ze środków Unii Europejskiej w ramach Funduszu Azylu, Migracji i Integracji



Projekt współfinansowany ze
 środków Unii Europejskiej w
 ramach Funduszu Azylu,
 Migracji i Integracji



ABOUT WARSAW

- More information about Warsaw: <http://www.warsawtour.pl/>
- Currency: Polish złoty (PLN); 1 EUR = ca. 4.3 PLN
- Time zone: GMT +1
- Power voltage: 230 V
- Smoking is prohibited in indoor public areas



CONTACT DATA

Please do not hesitate contact us in case of any problem or question:

Marcin Wrona

Tel: + 48 22 601 51 16

Mobile: + 48 606 985 568

e-mail: marcin.wrona@mswia.gov.pl ; esm@mswia.gov.pl

Ewelina Zabardast

Tel: + 48 22 601 33 06

e-mail: Ewelina.Zabardast@mswia.gov.pl ;

SEE YOU SOON IN WARSAW!!!

PL EMN NCP TEAM



Projekt współfinansowany ze środków Unii Europejskiej w ramach Funduszu Azylu, Migracji i Integracji