

South Østerdal and Elverum Municipality - partners for cooperation

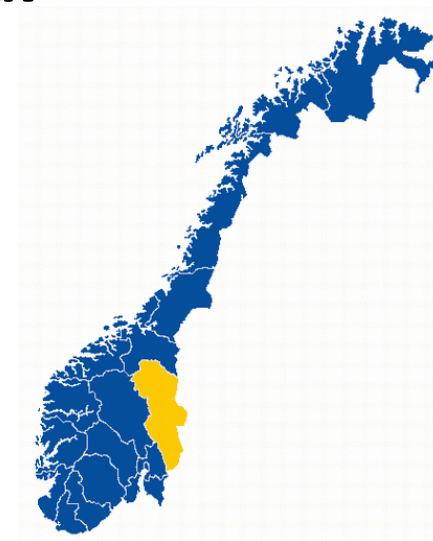
Alf Kristian Enger

Alf.kristian@ensamb.no



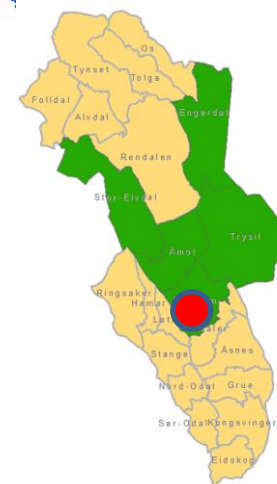
I will speak about:

- Elverum Municipality
- The Regional Council of Sør-Østerdal
- Main political focus and challenges
- Experience and Knowhow
- Our partners for Cooperation



Elverum Municipality

21 000 inhabitants , 1 229 km²



The «Capital» of Sør-Østerdal

Regionrådet for Sør-Østerdal



What characterizes us:



- Long distances / small population
- Forestry, Agriculture, Tourism, some Industry
- Education (College University)
- Training facilities and education for Norw. Defense
- Tradition and willingness for cooperation



Regionrådet for Sør-Østerdal



Our main (political) challenge:

➤ Climate change

- Environment and Nature
- City planning
- Sustainable construction
- Sustainable transport



➤ Business Development

- Population decreasing (or stable)
- Too many public workplaces.

➤ Health services for the inhabitants



Regional Council of Sør-Østerdal

- A coordinating public body in Innlandet county
- Region of Sør-Østerdal
 - The 6 municipalities **Elverum, Åmot, Stor-Elvdal, Engerdal, Trysil and Våler**
- Total:
40.000 Inhabitants
11.000 km²



Ongoing activities / Projects

(Examples)



- **“Energy and Climate in Sør-Østerdal”**
 - Sustainable City (village) planning – “Ydalir”
 - Sustainable building materials and methods
 - Renewable Energy. (Solar, Bio, LT Geothermal)
 - Green business development
- **“New technology in Public Health”**
 - “You may live at home longer than you believe”



International cooperation

Our politicians encourage us to be active in international projects.



EEA / Norway Grant

- Latvia: Aloja (SALA) (2014 – 2016)
- Hungary: Racalmas: HP / Energy (2013 – 2017)
- Hungary: Abasár / Szamossalyi: Elderly care (2017)
- Hungary: Racalmas: Micro-grid (2017)

EU / Interreg

- FEM
- EcoINSIDE (Ongoing)
- Effect4buildings (Ongoing)
- Smart Circular Procurement – CircPro (Ongoing)



Latvia: Aloja Sala Library.



Total investment < 1 MEur (92 % from EEA / Norway Grants)



Energy consumption: 14,7 kwh / m2 / year



Partner: Hamar Naturskole



- Owned by Hamar Municipality
- No pupils, but serves yearly 18.000 children and trains 1200 teachers in nature science
- Main focus:
 - Observe , discover and mapping of environment in forest and water
 - Climate, energy, environment and waist handling
 - Culture heritage
 - Wildlife with activities in the neighborhood of the school
- www.naturskolen.no



Partner: Tretorget

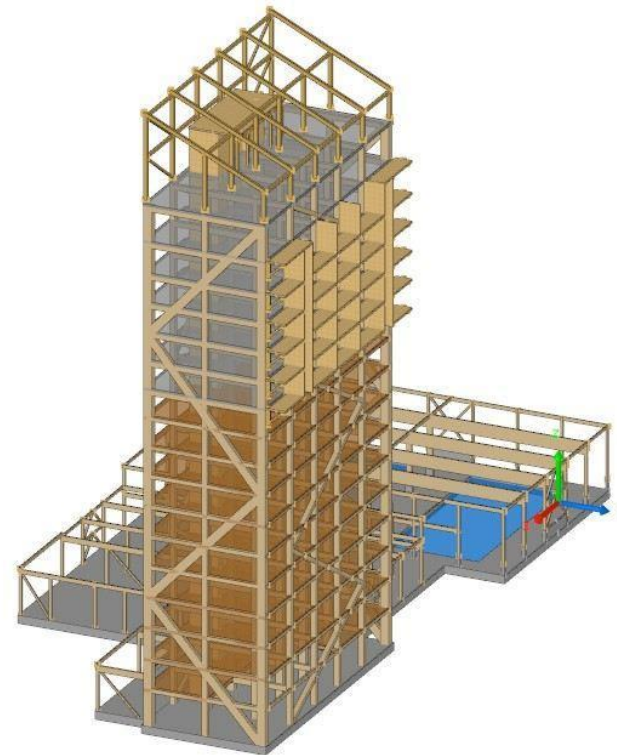



Consulting company

- We have been a part of the regional innovation- ecosystem since 2001.
- Our mission is to make the innovation process more efficient.
- A competence broker (facilitator) with broad experience in Nordic and European Projects
- www.tretorget.no



The highest wooden building in the world “Mjøstårnet” (85 m.)





Thank you for your attention!

**We hope that our project can inspire
and motivate other Municipalities.**

**Do not hesitate to contact us for more
details and specific experiences.**

Alf Kristian Enger – alf.kristian@ensamb.no

