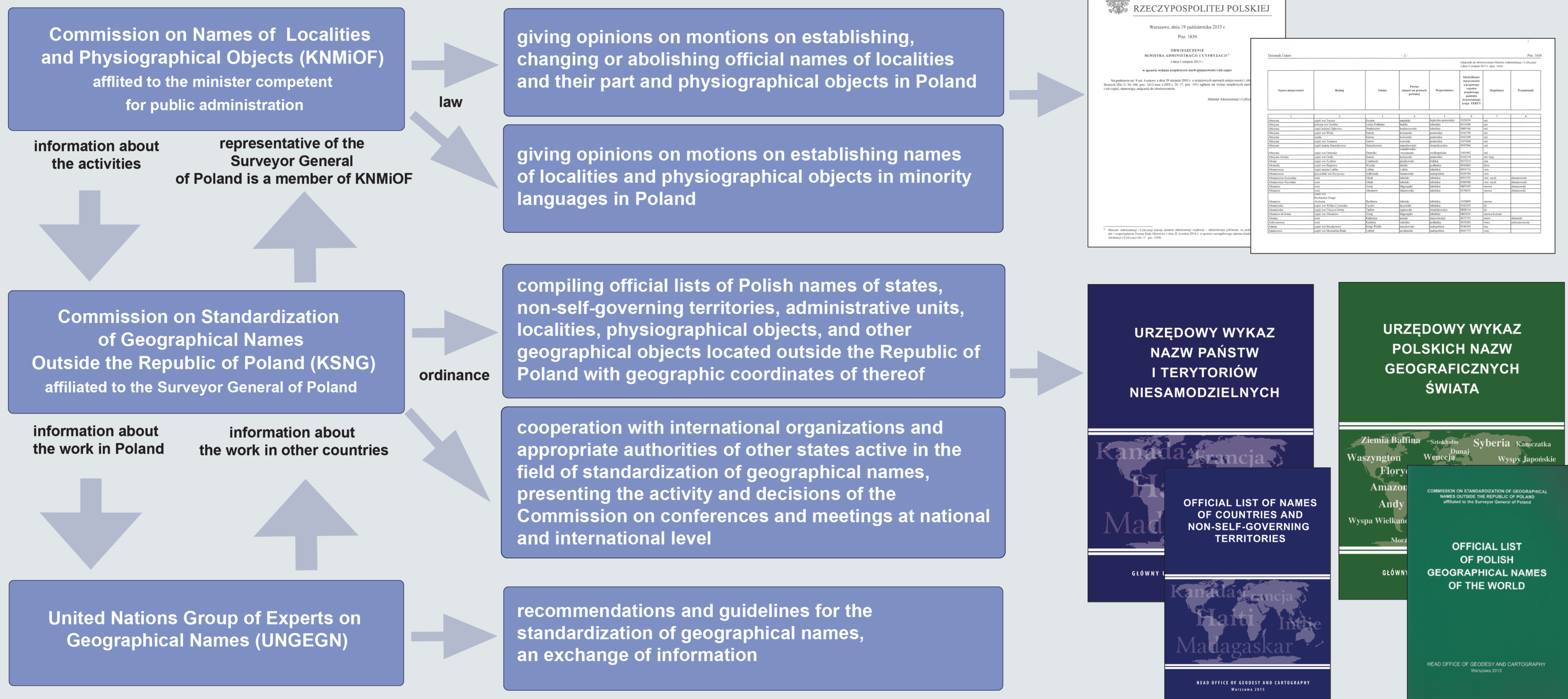


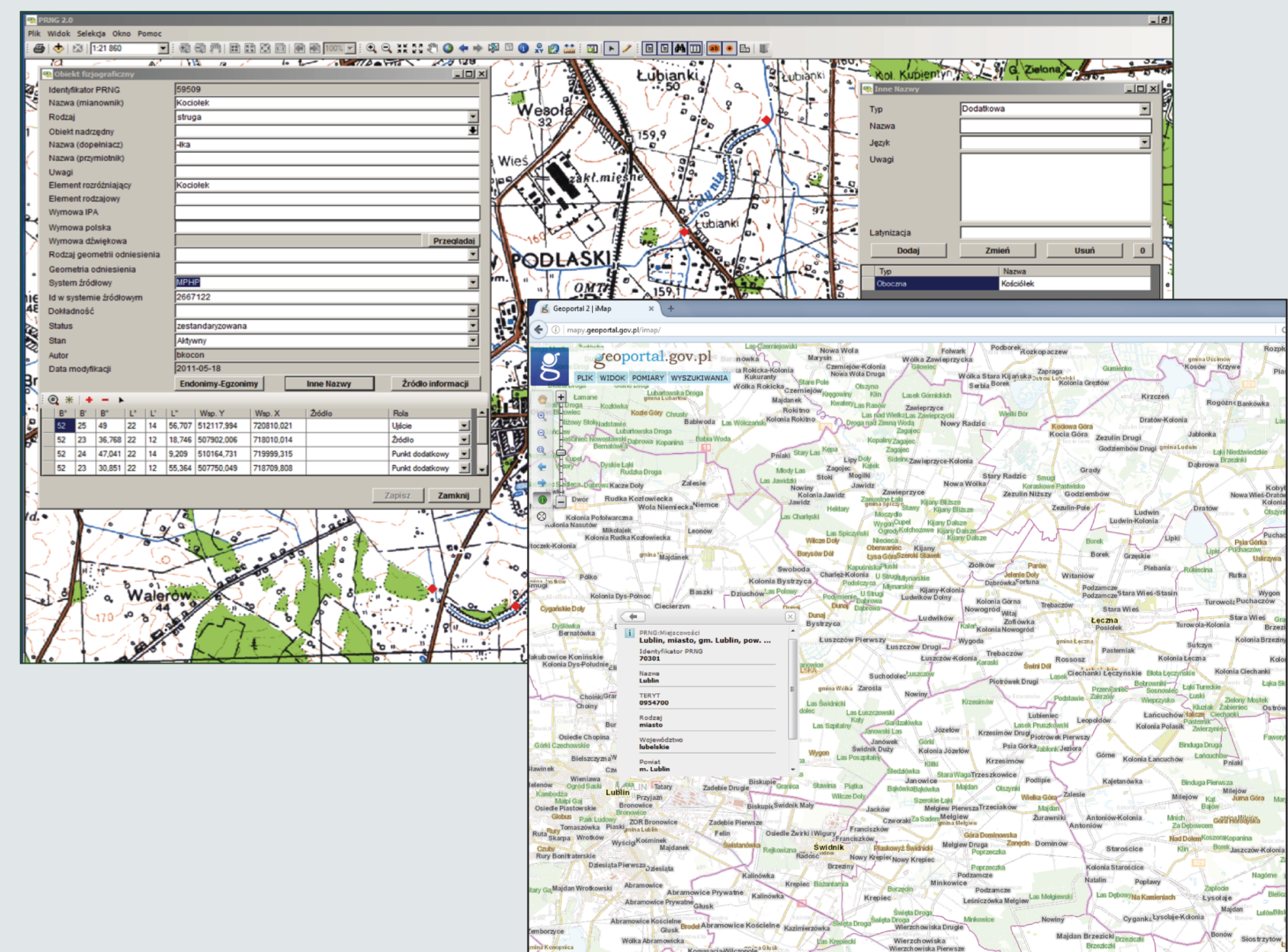
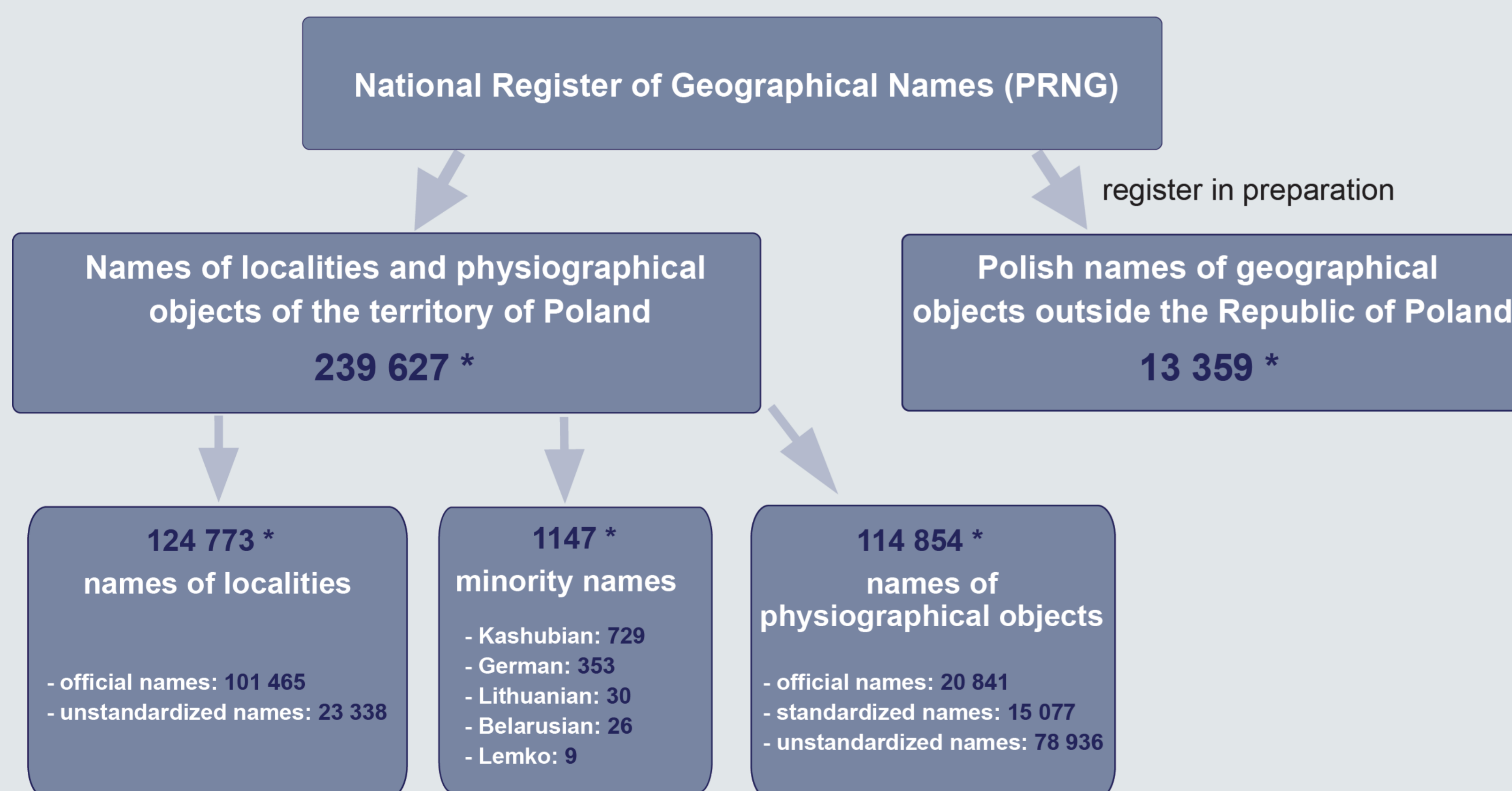
In Poland there are two bodies engaged in the standardization of geographical names:

- The minister competent for public administration** - (consistent of the Act of 29 August 2003 - on official names of localities and physiographical objects) manages matters related to establishing, changing or abolishing official names of localities or their parts and physiographical objects in Poland.
- The Surveyor General of Poland** - (consistent of the Act of 17 May 1989 - Geodetic and cartographic law) manages matters related to the standardization of Polish names of geographical objects located outside Poland as well as conducting the national register database of geographical names including current and historical information related to official names of localities, their parts and physiographical objects and Polish names of geographical objects located outside the Republic of Poland.

In order to accomplish the above tasks two commission were established as advisory bodies:



National Register of Geographical Names (pol. Państwowy Rejestr Nazw Geograficznych) - is the major, complete, reliable and updated reference database that includes geographical names (together with attributes) as correct and recommended for the official use. This register is maintained by the Main Geodetic and Cartographic Documentation Centre subordinated to the Surveyor General of Poland. In the Register the following types of names are collected: **official names** (names published by ordinance of the minister competent for public administration), **standardized names** (names adopted by the Commission on Names of Localities and Physiographical Objects), **unstandardized names** (other names listed on topographic maps or other sources) and **minority names**. In order to provide updated data in the Register, geographical names are gathered, verified and supplemented in a continuous manner, depending upon the objects which they apply to, on the basis of source materials: legal acts, topographic maps (in scale 1: 10 000), lists of names elaborated by public institutions, as well as the terrain reconnaissance.



* Data as of 31st of March 2016