

# Hutchison Ports GDYNIA

**Ships, trains, terminals –  
Polish offer for Slovak business expansion**



# The World of Hutchison Ports

52 Ports in 26 Countries

88 mln TEU handled in 2021

## ASIA

1. China
2. Indonesia
3. Malaysia
4. Myanmar
5. Pakistan
6. South Korea
7. Thailand
8. Vietnam

## MIDDLE EAST

16. Iraq
17. Oman
18. Saudi Arabia
19. UAE

## AFRICA

20. Egypt
21. Tanzania

## EUROPE

9. Belgium
10. Germany
11. Poland
12. Spain
13. Sweden
14. The Netherlands
15. United Kingdom

## AUSTRALASIA

22. Australia

## THE AMERICAS

23. Argentina
24. Bahamas
25. Mexico
26. Panama



# Hutchison Ports in Europe

16.7 mln TEU in 2021

6,300 employees

14 ports and inland terminals

## Great Britain

Felixstowe  
Harwich  
London Thames

## Germany & Benelux

Amsterdam  
Duisburg  
Moerdijk  
Rotterdam  
Venlo  
Willebroek

## Spain

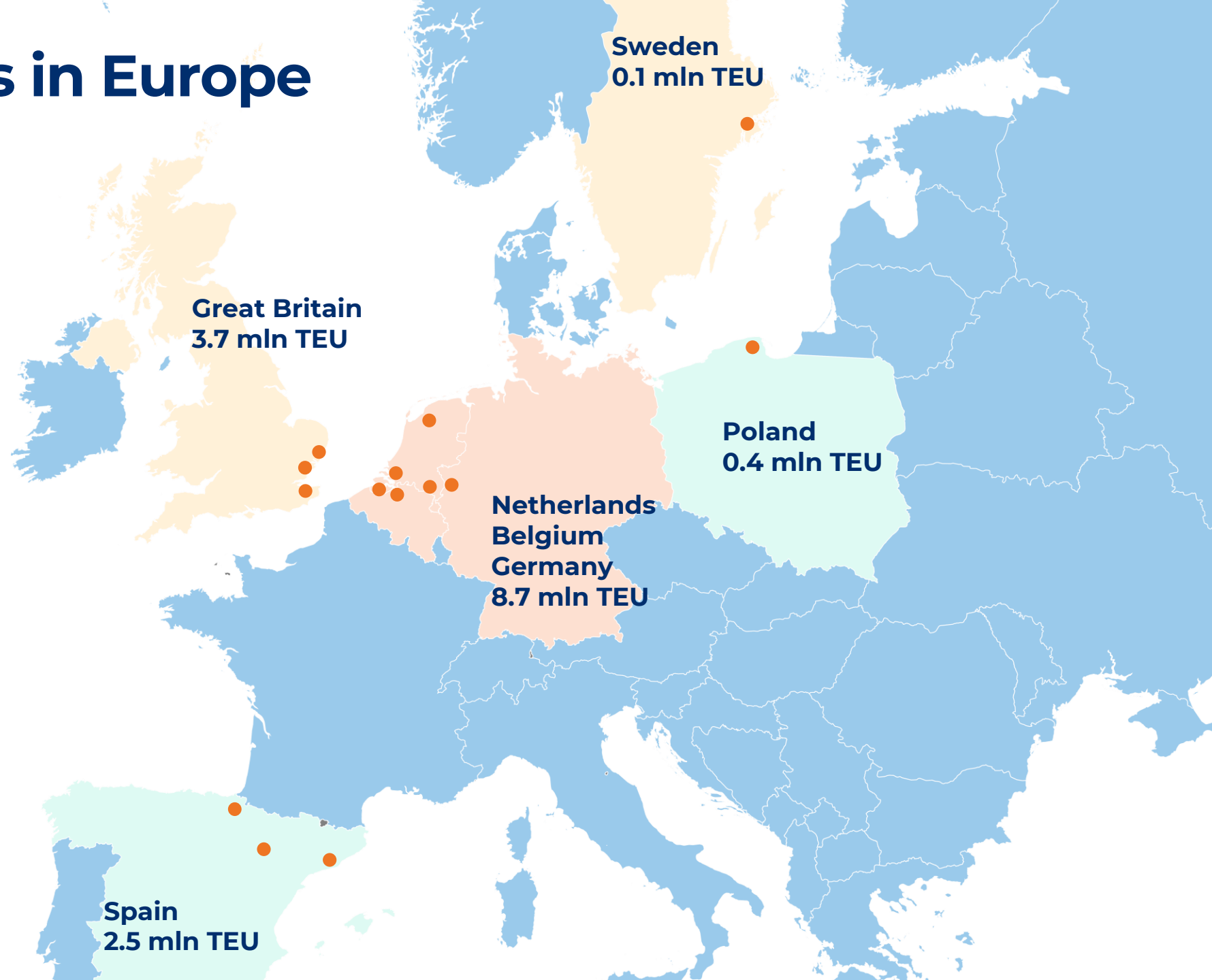
Barcelona  
Pamplona  
Zaragoza

## Poland

Gdynia

## Sweden

Stockholm  
Norvik





**HUTCHISON PORTS**  
**GDYNIA**



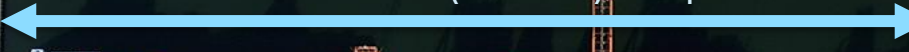


Stacking capacity: 12,000 TEU  
Reefer plugs: 384  
Rail track length: 1,473m

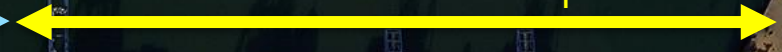
Quay length: 812m



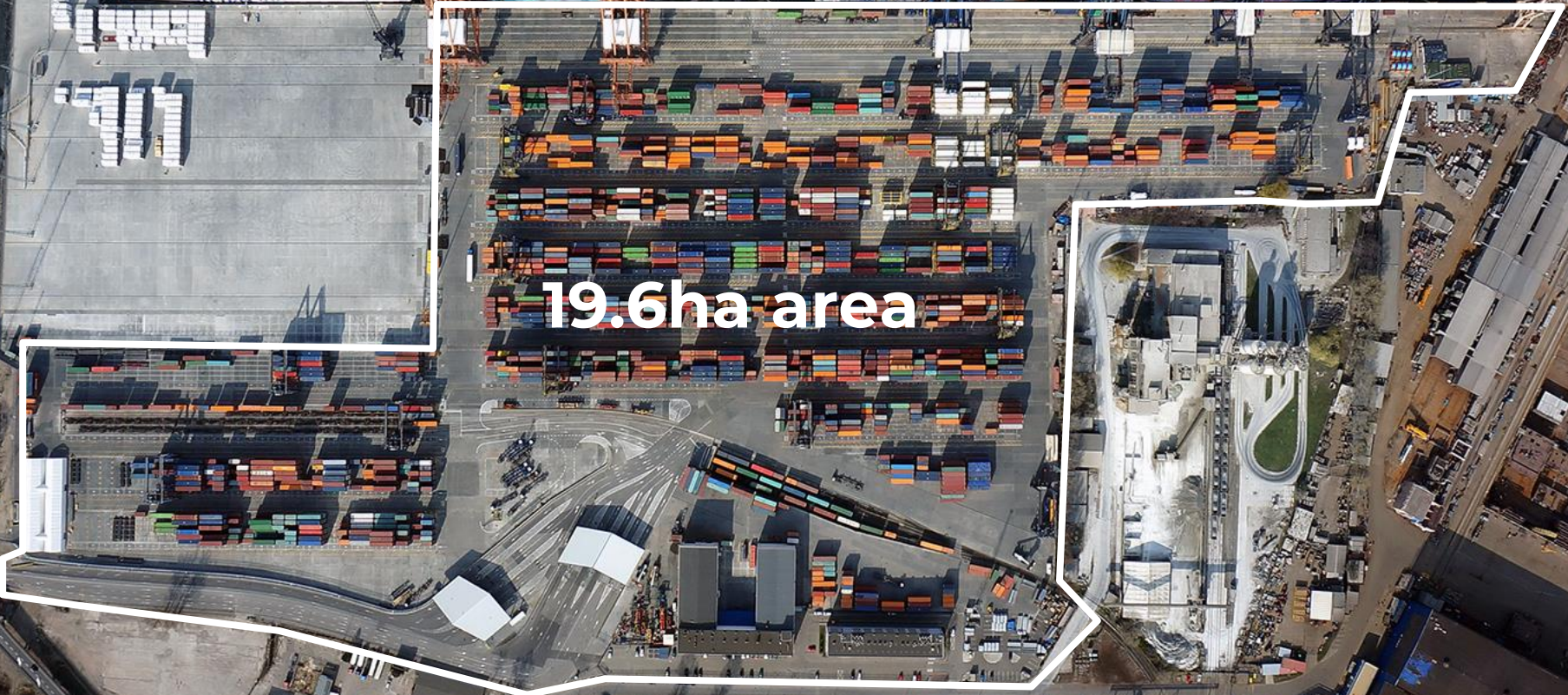
447m – 13.5m (15.5m) depth



365m – 11.0m depth



19.6ha area



# MODERNISATION OF 85M BERTH LENGTH

- Deepwater berth details from January 2022:

Length: 447m

Depth: 13.5m  
(from 2023: 15.5m)

- Vessel berthing restrictions:

LOA: 367m  
(from 2023: 400m)

Draft: 13.0m  
(from 2023: 15.0m)






September 2020

# WIDE CHOICE OF PERFORMING CARRIERS



# FEEDER & SHORT-SEA REGULAR SERVICES

	Hamburg – <b>Gdynia</b> – Klaipeda - Tallin/Muuga – Rauma - Hamburg (BAX)
	Hamburg – <b>Gdynia</b> – Hamburg (PEX)
	Hamburg – Wilhelmshaven – <b>Gdynia</b> – Hamburg (NPX)
	Rotterdam – Klaipeda – Riga – Gdańsk - <b>Gdynia</b>
	Hamburg – Bremerhaven – Klaipeda – Riga – Gdańsk - <b>Gdynia</b>
	<b>Gdynia</b> – Immingham – <b>Gdynia</b>
	Bremerhaven - Hamburg – <b>Gdynia</b> – Gdańsk

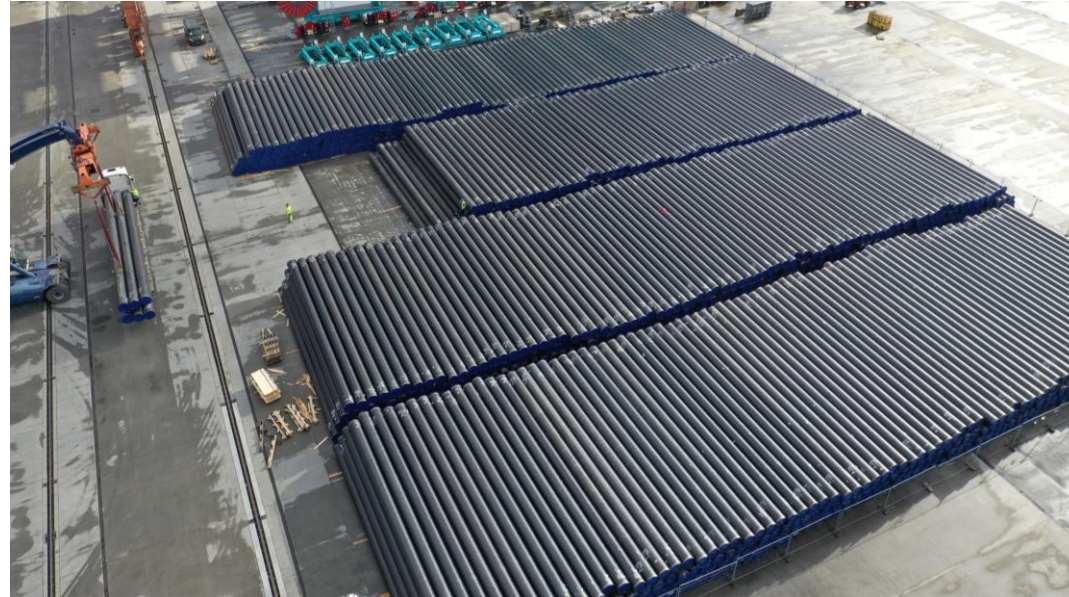


**Special 3ha area designated for handling of non-containerised cargo**



**3ha area**

# BREAKBULK AND PROJECT CARGO



**Thank you!**

