



15 January 2021

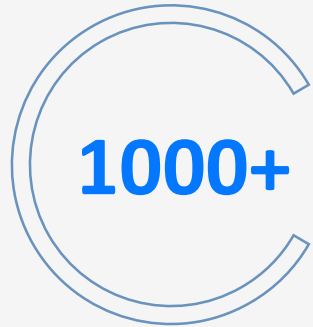
Together for Healthier **Lives in Europe**

EIT Health is supported by the EIT,
a body of the European Union



Our long term aims

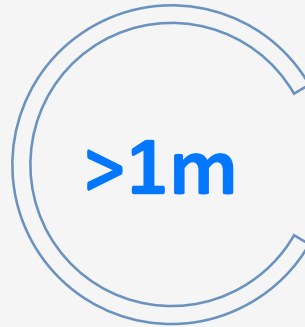
By 2030 we'll be Europe's leading health innovation platform, facilitating longer, healthier, lives and more sustainable health systems.



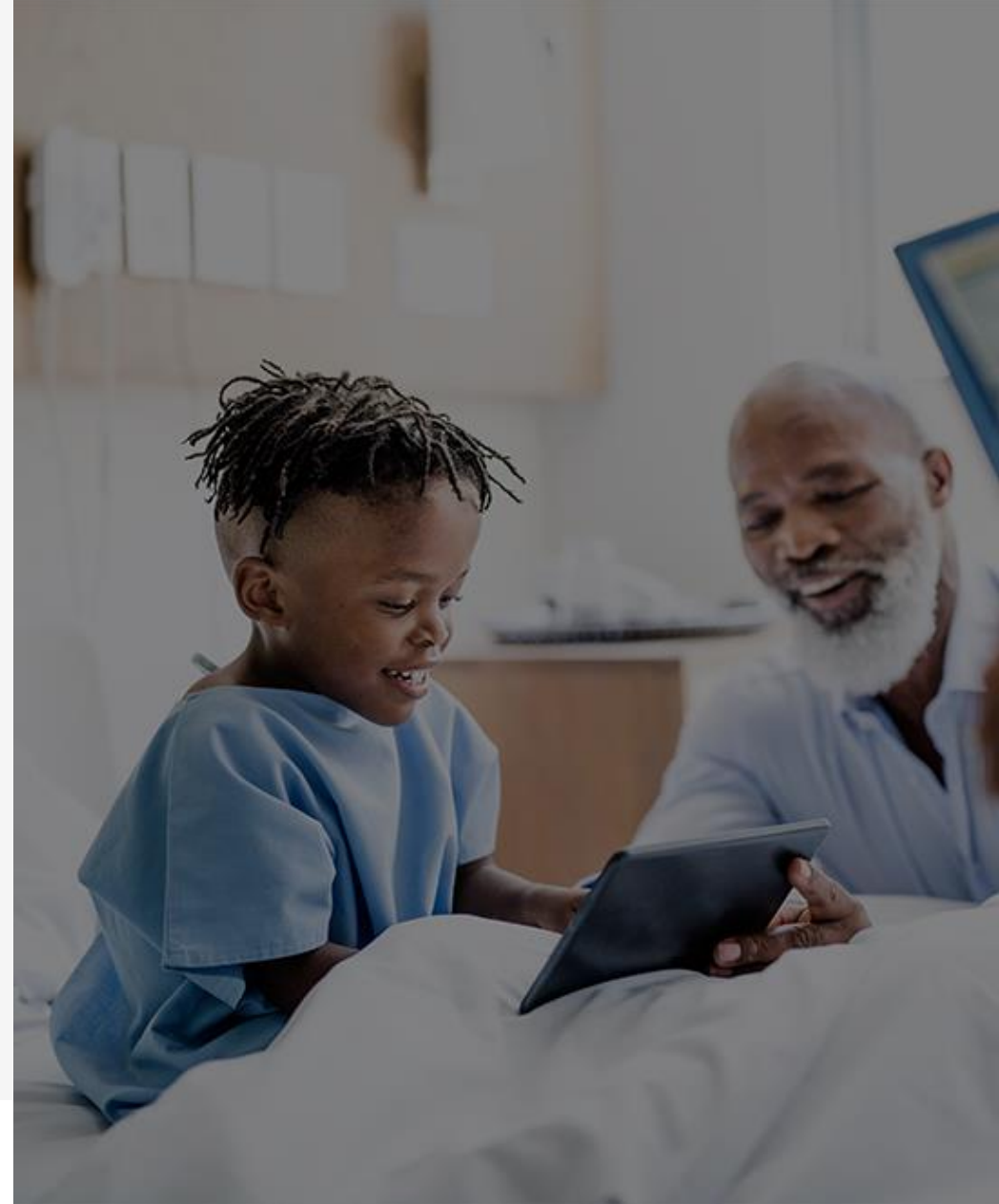
Products, services, new business models and processes.



Investment for high impact start-ups and scale-ups.



Professionals reached with globally recognised education programmes.

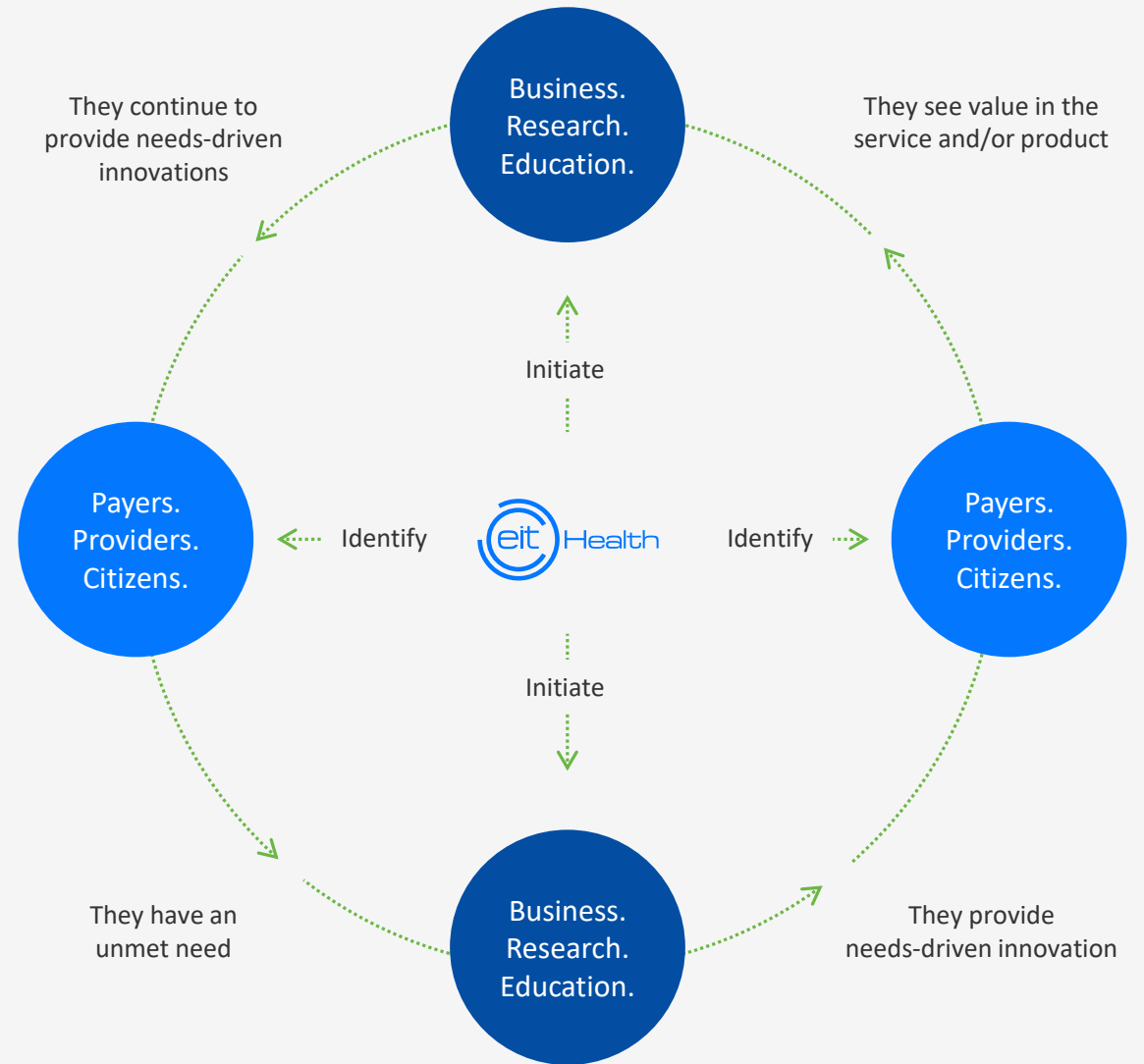


Our approach

We identify unmet clinical and economic needs within complex healthcare systems.

Then **initiate innovation** by bringing together the brightest minds from education, business, and research.

Addressing the needs of the market and society.



Our presence

EIT Health supports cross-border collaboration.

Six regional innovation hubs

Operate as strong clusters of relevant actors collaborating as a thriving ecosystem.

InnoStars

Headquartered in Budapest, EIT Health InnoStars spans several geographic regions in Hungary, Italy, Poland and Portugal.

EIT Health Regional Innovation Scheme (RIS)

14 EIT Health Hubs in 13 countries to close the gap between regions that are healthcare innovation leaders and those with more moderate innovation.

Beyond Europe

Further hubs in the United States and Israel, connect innovators across Europe to other key thriving ecosystems beyond the EU.

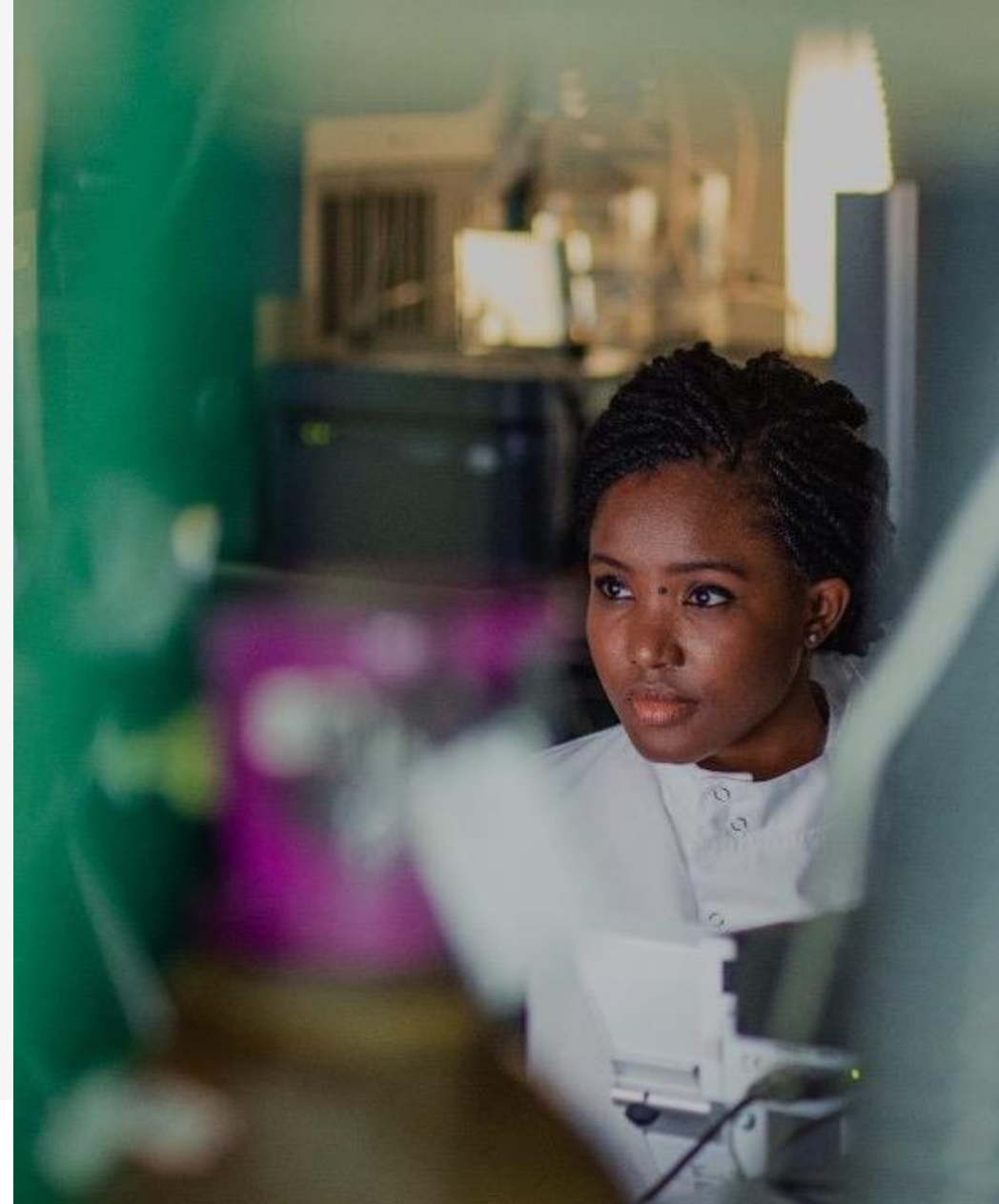


Our network

EIT Health has built Europe's largest health innovation network connecting approximately 150 world-class organisations and entities from business, research, education and healthcare delivery.

- Cumulative R&D spend of more than €35 billion per year.
- Access to citizens, patients and markets.
- A thriving ecosystem of more than 750 start-ups plus education and training programmes.

The result? Life-changing ideas become reality.



Our partners

We work with world-leading academic institutions, businesses and innovators to drive health innovation forward.

Core partners

A grid of logos for core partners, including Abbott, Achmea, LEITAT, Air Liquide, Altran, Amgen, Atos, Biocatal, BD, Bayer, C22, DTU, Fraunhofer, FAU, CLINIC, imec, Philips, Profil, Skane, Roche, Sanofi, SAP, SEB, Siemens, TUM, TU/e, Trinity College, Newcastle University, IESB, and UM.

Associate partners

A grid of logos for associate partners, including Abbvie, AstraZeneca, Beiersdorf, Biocat, BioM, Celon, Comarch, EPFL, GSK, Home Instead, Merck, MSD, Novartis, SDN, Synlab, and many others.

Our programmes: Accelerator, Campus and Innovation



Accelerator

A catalyst to business growth to deliver transformative products and services.

Shortens the time-to-market for entrepreneurs, start-ups and SMEs, while creating new jobs and contributing to a thriving health economy.



Campus

Bridges the gap between academia and enterprise to upskill professionals on new innovative techniques, providing the practical knowledge and inspiration to deliver future innovation.

Engages learners across society, from citizens to established healthcare professionals.



Innovation

Connects bold approaches to the people who can make them a reality by turning them into a commercially-viable product or service.

Builds a task force of world-class experts from business, research and education.

Our success stories



Uvera

Uvera, a Poland-based team using bacteria to produce a natural UV filter.

EIT Health accelerated start-up – Uvera, has just secured EUR 2.5M funding from the European Innovation Council within the “Green Deal”. The team were selected as within the best 3% of innovative, impactful and sustainable projects recognised in the EU.



Silver Starters

The Silver Starters programme aims to support citizens over 50 to start and manage their own business. It is an eight-week course specifically designed to equip older citizens with the tools and knowledge they need for their business to thrive and overcome any barriers they may be likely to experience along the way.

Silver Starters highlights the many choices available to those over 50 and gives a solid foundation into the essentials of establishing a new company.



Stockholm 3

EIT Health identified Stockholm3 as a solution with potential to improve the accuracy of prostate cancer diagnosis for men across Europe and around the world. Stockholm3 has now been evaluated in trials amongst almost 60,000 men – creating one of the largest prostate cancer diagnosis datasets. Stockholm3 is available in Sweden, Finland, Norway and Denmark, with plans to launch across the rest of Europe and the world.

Our impact in 4 years: 2016 - 2019



Investment attracted
by start-ups **€248m+**



87 products and
services to market



754 start-ups
supported



36,000 graduates and
professionals trained





CONTACT

Mikołaj Gurdała

mikolaj.gurdala@eithealth.eu